



# WINE TRAILS



Tasmania  
— 2022 —



WINE TASMANIA PRESENTS YOUR GUIDE TO  
EXPLORING TASSIE WINE & VINEYARDS  
WITH THINGS TO SEE AND DO ALONG THE WAY!



# WINE TASMANIA

Established in 2006, Wine Tasmania is the peak body assisting the island's wine producers to be recognised as world leaders.

## WINE TASMANIA

Level 5, 29 Elizabeth Street,  
Hobart TAS 7000  
T (03) 6223 3770  
E mail@winetasmania.net.au

Information regarding the Tasmanian wine sector is also available at [WWW.WINETASMANIA.COM.AU](http://WWW.WINETASMANIA.COM.AU)  
© 2021 Wine Tasmania

*Wine Tasmania acknowledges the Aboriginal people as the traditional owners of lutruwita/Tasmania, our island home. Our vines have their feet in the ancient soils of lutruwita and benefit from the water that generously falls on this island. Our grapes breathe and thrive in the island's crisp fresh air and our vineyards are planted along our precious waterways, which moderate vineyard temperature and help to protect them from frosts. We therefore thank and pay our respects to the Tasmanian Aboriginal communities, elders past and present and recognise their deep and spiritual connection to this amazing place, lutruwita.*

**DISCLAIMER:** Wine Tasmania has made every endeavour to ensure that details are correct at the time of printing (September 2021) but can accept no responsibility for any inaccuracy contained in this publication as a result of information supplied, and can accept no responsibility for subsequent changes or withdrawal of details or services shown.

**CREDITS** Design: Futago. Illustrations: Mikhail Seleznev and The Noun Project. Images courtesy Adam Gibson, Renee Hodskiss, Josef Chromy Wines & Ghost Rock. All other images courtesy Wine Tasmania.

Take  
Me  
Home

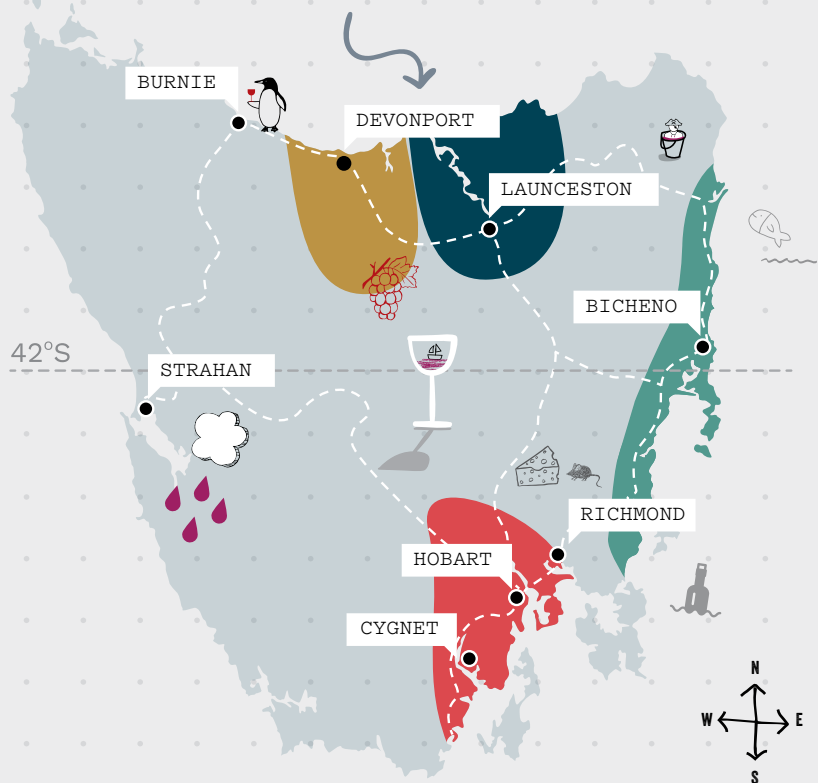


Wine producers with this icon displayed are participants in the Tasmanian Mixed Dozen freight scheme. This allows you to purchase a bottle or two from different vineyards as you travel around and have wine dispatched to your home address once you've reached a dozen bottles. Present your purchased wines (in dozen lots) at the last participating vineyard on your travels from which you purchase wine — they'll let you know the cost of freight and it will be sent straight to you.



# DISCOVER

## Tasmania's wine trails

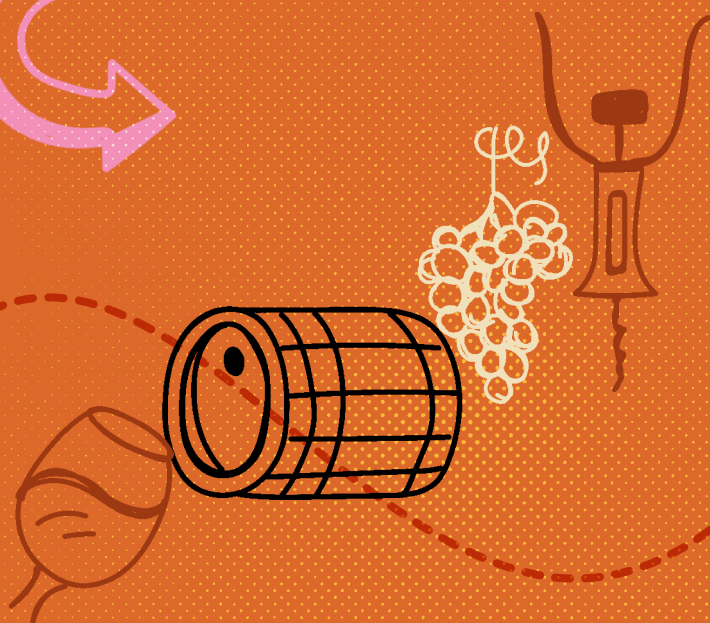


### CONTENTS

VISITING TASSIE .....	3	EAST COAST WINE TRAIL .....	18
TASSIE WINE IS AWESOME .....	4	TAMAR VALLEY WINE TRAIL .....	26
SOUTHERN WINE TRAIL .....	6	(includes Tamar Valley, Pipers River and Launceston)	
(includes Coal River Valley, Derwent Valley, Huon Valley/d'Entrecasteaux Channel and Hobart)		NORTH WEST WINE TRAIL .....	41
		VINO TASMANIA .....	48



# **CONGRATULATIONS ON EXPLORING AUSTRALIA'S BEST WINE REGION**



*OK, we may be a little biased, but we are sure  
that you will thoroughly enjoy the delicious  
wine from our little island with latitude.*

## VISITING TASSIE

*lutruwita* / Tasmania (or Tassie, as the locals know it) is one of the most spectacular places in the world. Lush green corners of paradise, picture perfect beaches, snow capped mountains, breathtaking forests, waterfalls and lakes – you'll find just about every kind of scenery across our landscape. Not to mention cute, cuddly and curious wildlife.

You'll quickly find that Tasmania's vineyards are generally not found on flat land but follow the slope of a hill or the curve of a valley. This makes for diverse and distinctive wines, with no two vineyards and seasons the same. Even wines from the same vineyard will be different across vintages – you'll be able to taste the flavours of the season in each glass.

From converted heritage stables to ultra modern cellar doors, chat and kick the dirt with our wine producers to find out why they have chosen to grow grapes and make wine in these extreme conditions on the edge of the world.

Tasmanian wine is crafted to complement our island's produce, so find a world class view (there are plenty) somewhere and feast like a local! Pair a delicious Tassie pinot noir with slow pulled pork, a glass of sparkling with some freshly shucked oysters, chardonnay with Tassie's famous scallop pies or local cheeses with a late harvest riesling.

Although Tasmania is classified as one region, vineyards stretch right across the island. In this guide the seven distinct areas are divided into four wine touring routes. All are within easy reach of major centres and are along the journey to some of Tasmania's iconic attractions and experiences.

### Tassie's Wine Trails

SOUTHERN		6
EAST COAST		18
TAMAR VALLEY		26
NORTH WEST		41





# TASSIE WINE IS AWE- SOME



**UNBELIEVABLY, WE ALMOST DIDN'T HAVE A WINE SECTOR AT ALL! A LOT OF PEOPLE SAID IT COULDN'T BE DONE, THAT TASMANIA WAS TOO COLD FOR WINE GRAPES, THAT IT WOULD NEVER AMOUNT TO ANYTHING! DESPITE THESE DETRACTORS, SOME BRAVE AND DETERMINED PEOPLE MADE SURE THOSE PEOPLE ATE THEIR WORDS (AND DRANK OUR DELICIOUS WINE).**

## **SO WHY ARE TASSIE'S WINES SO AWESOME?**

- Tasmania's wines are among the best on the entire planet
- We only produce a thimbleful of wine (1% of Australia's total wine), but it's the best (over 4% of Australia's wine value)
- Our people - Tasmanians - are the best kind of people, particularly the ones that grow and make things
- Sparkling wine (yum)
- Pinot noir (the "heartbreak" grape)
- Riesling, chardonnay, pinot gris, shiraz (or syrah, for the refined) and all sorts of other wonderful, delicious grape varieties call Tasmania home
- We drink most of it ourselves - only 5% is exported, the rest is sold in Australia and much of it is only available in Tasmania itself

Check out Wine Tasmania's website – [www.winetasmania.com.au](http://www.winetasmania.com.au) – for further information on the island's wine scene, contact details for wine producers and more.

## VARIETAL WINE TRAILS: FOLLOW YOUR OWN PATH



If you have a favourite wine or two, you can create your own itinerary focusing on your preferred tipples. Create your own

Sparkling or Pinot Noir Wine Trail – or whatever takes your fancy. All you have to do is visit [www.winetasmania.com.au/wine-trails](http://www.winetasmania.com.au/wine-trails) and select your favourite varieties.

## OTHER THINGS TO SEE AND DO

You will find some information in this guide on other things you might like to see and do as you're travelling around. You'll also find loads of information to help you plan your visit at [www.discovertasmania.com](http://www.discovertasmania.com).

You may also like to explore complementary food and beverage trails during your visit, such as the Tasmanian Cider Trail [www.tascidertrail.com](http://www.tascidertrail.com), Whisky Trail [www.taswhiskytrail.com](http://www.taswhiskytrail.com) and Seafood Trail [www.tsic.org.au](http://www.tsic.org.au).

## QUALITY, NOT QUANTITY

Don't be that person. In Tasmania, it is all about quality, not quantity. Wine Tasmania encourages responsible consumption of alcohol and recommends the following: don't drink on an empty stomach, drink plenty of water, use spittoons, take a guided wine tour with one of the many specialists (check out their ads in this Guide!) or, if you plan to drive, choose a designated driver.

Be sure to contact cellar doors before you visit, as they may have limited capacity and require tastings, tours and experiences to be pre-booked. Our wine producers would love to give you the best possible experience, so let them know when you're coming!



# SOUTHERN

## *Wine trail*

HOBART'S WORLD CLASS FOOD AND WINE, HISTORY AND HERITAGE BLEND TOGETHER TO MAKE AUSTRALIA'S SOUTHERNMOST CAPITAL CITY AND SURROUNDING REGIONS A MUST-SEE DESTINATION.

It's the gateway to southern *lutruwita* / Tasmania and it doesn't really matter whether you love trekking into the wilds, sipping on a crisp Riesling or venturing deep into an underground museum.

There's a little something for everyone in a place so compact that a few days will feel like a week. With short travel times between adventures, you can be atop *kunanyi* / Mount Wellington and swimming at a beach on the same day, cruising up the River Derwent and meeting a local artist in Salamanca on the very same afternoon.

The beauty of this capital city is that everything is close to Hobart. Those eager to explore beyond the city centre in any direction will stumble across vineyards, beaches, forests, historic towns, markets, museums and mountains right next door to the city itself.

And there's good reason well-known foodies have settled in southern Tasmania. The soil is rich, the water and

air pure, and innovative locals serve up paddock to plate goodness. Growers and makers deliver everything from soft goat's cheese, smoked salmon and roadside apples to world class sparkling wine. Pick your own fresh produce direct from the source or pull up a seat at a stylish eatery.

Tasmania may look little on the map, but it's brimming with things to do. Whether you're into art and culture, outdoor adventure or have a penchant for exploring the past, Tasmania has plenty to fill your day. Pull on some boots and venture into the wilderness, meet a maker, drive through vineyard landscapes or get up close to a Tassie devil. Perhaps you like the idea of cruising southern waterways or browsing colourful market stalls. There are things to experience here that you can't do anywhere else on the planet. Time to get out a pen and paper – it could be a quite a list.

For more local touring information head to [hobartandbeyond.com.au](http://hobartandbeyond.com.au).

# OUR GRAPES ARE PRECIOUS

Our grapes and vines need to be very carefully nurtured in order to produce the outstanding wines you'll be enjoying as you travel around. Please do not enter any vineyards, as you may unknowingly be carrying unwanted pests or diseases that could cause great damage.



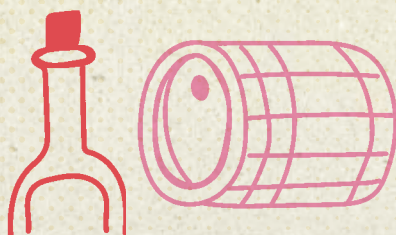
Look for  
this sign



Our wine producers would love to give you the best possible experience, so let them know when you're coming! Be sure to contact cellar doors before you visit, as they may have limited capacity and require tastings, tours and experiences to be pre-booked.



- MONA is the Museum of Old and New Art, displayed in a secular temple at Moorilla Estate: 6,000 square metres of artwork that will batter your beliefs.
- Each Saturday hosts Australia's best outdoor market on Salamanca Place – bargains and buskers, art and craft, food and wine, trash and treasure.
- Visit the pinnacle of spectacular *kunanyi* / Mt Wellington and see the entire city and its harbour below.
- Immerse yourself in the power of Port Arthur and *turrakana* / Tasman Peninsula, its convict buildings, gardens, tours and captivating tales – an essential Tasmanian experience.
- Get back to nature – walk the Three Capes Track, take a day trip by ferry to Bruny Island or wander the pristine beaches of Tasmania's South.



# SOUTHERN

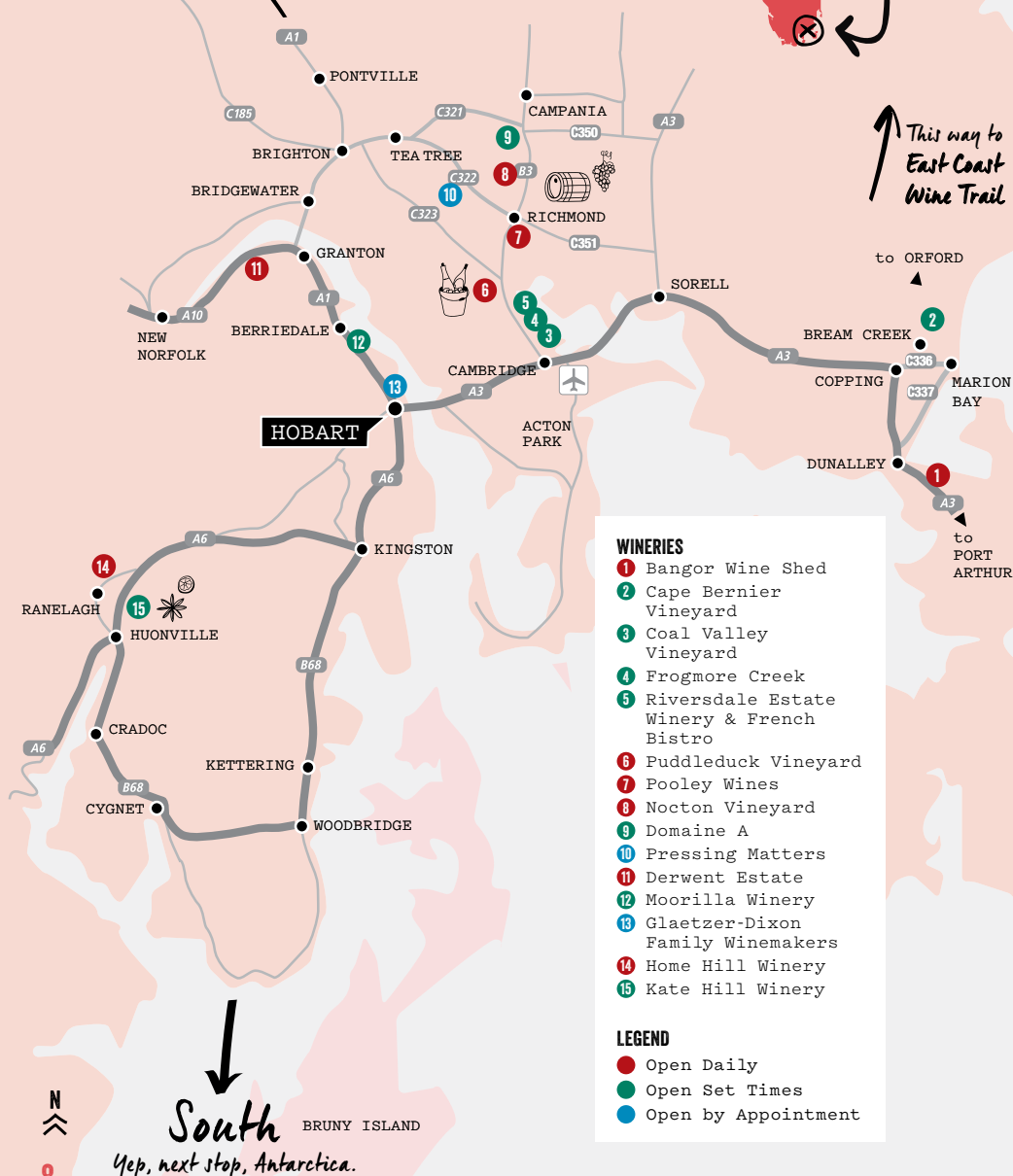


This way to  
Tamar Valley &  
North West Wine Trails.

## Wine trail



This way to  
East Coast  
Wine Trail



### WINERIES

- 1 Bangor Wine Shed
- 2 Cape Bernier Vineyard
- 3 Coal Valley Vineyard
- 4 Frogmore Creek
- 5 Riversdale Estate Winery & French Bistro
- 6 Puddleduck Vineyard
- 7 Pooley Wines
- 8 Nocton Vineyard
- 9 Domaine A
- 10 Pressing Matters
- 11 Derwent Estate
- 12 Moorilla Winery
- 13 Glaetzer-Dixon Family Winemakers
- 14 Home Hill Winery
- 15 Kate Hill Winery

### LEGEND

- Open Daily
- Open Set Times
- Open by Appointment

## 1 BANGOR VINEYARD SHED

📍 20 Blackman Bay Road  
Dunalley  
(03) 6253 5558  
info@bangorshed.com.au



**Open:** 11am–5pm daily.  
**Closed:** Christmas Day and Good Friday.

Bangor Vineyard Shed is an award-winning cellar door and restaurant, with stunning views over Bangor vineyard, Bangor farm and Norfolk Bay. Join us for wine tasting and sales, and alfresco indoor/outdoor dining, showcasing local produce.

[WWW.BANGORSHED.COM.AU](http://WWW.BANGORSHED.COM.AU)

X12

## 2 CAPE BERNIER VINEYARD

📍 230 Bream Creek Road  
Bream Creek  
(03) 6253 5443  
info@capebernier.com.au



**Open:** 12–5pm Friday to Monday, May–September  
11am–5pm Thursday to Monday, October–April.  
Other times by appointment.  
**Closed:** Christmas Day and Easter Sunday.

Cape Bernier is a beautiful family-run vineyard overlooking stunning Marion Bay. If you are heading to Port Arthur, call in to taste our estate grown sparkling, red and white wines. Our Pinot Noir epitomises the characteristics found only in grapes grown in our corner of the world.

[WWW.CAPEBERNIER.COM.AU](http://WWW.CAPEBERNIER.COM.AU)

X12

## 3 COAL VALLEY VINEYARD

📍 257 Richmond Road  
Cambridge  
(03) 6248 5367  
admin@coalvalley.com.au



**Open:** 10am–5pm Thursday to Monday,  
November to May.  
11am–4pm Thursday to Monday, June–October  
**Closed:** Christmas, Boxing Day and Good Friday;  
July (check website).

Passionate producers of sustainably grown wines. Visit to try our Sparkling, Pinot, Chardonnay, Riesling and Tempranillo. Relax in our cellar door/restaurant. Informal dining with delicious food, estate wines, local beer and cider. Stunning views.

[WWW.COALVALLEY.COM.AU](http://WWW.COALVALLEY.COM.AU)

X12

## 4 FROGMORE CREEK

📍 699 Richmond Road  
Cambridge  
(03) 6274 5844  
admin@frogmorecreek.com.au



**Open:** 10am–5pm Thursday to Monday.  
**Closed:** Christmas Day.

The home of Frogmore Creek and Forty-Two Degrees South wines offers stunning architecture overlooking the Coal River Valley with an extensive list of premium wines on tasting. Lunch bookings are recommended.

[WWW.FROGMORECREEK.COM.AU](http://WWW.FROGMORECREEK.COM.AU)

## 5 RIVERSDALE ESTATE

📍 222 Denholms Road  
Cambridge  
(03) 6248 5555  
info@riversdaleestate.com.au



**Open:** 10am-5pm Thursday to Sunday.  
**Closed:** Christmas Day, Boxing Day, Easter Sunday, Anzac Day and public holidays.

Largest Tasmanian family owned and operated vineyard in Southern Tasmania, spectacular water views, award winning wines. Award winning restaurant, High Tea Orangery & Peter Rabbit Gift Shop.

[WWW.RIVERSDALEESTATE.COM.AU](http://WWW.RIVERSDALEESTATE.COM.AU)

X12

## 6 PUDDLEDUCK

📍 992 Richmond Road  
Richmond  
(03) 6260 2301  
bookings@puddleduck.com.au



**Open:** 10am-5pm daily.  
**Closed:** 25th to 28th December, Easter and some public holidays (check our website for more details).

Welcome to Puddleduck! Relax in our fun, friendly, family owned and operated cellar door. Enjoy a taste, or lunch by the lake. Browse in our 'Everything Ducky Duck Shop' or take a winery tour 10:30am and 2:30pm weekdays (by appointment). See you soon!

[WWW.PUDDLEDUCK.COM.AU](http://WWW.PUDDLEDUCK.COM.AU)

X12

**Vineyard and Winery tours**  
10.30 weekdays (bookings essential)  
Call to book on 03 6260 2301  
facebook.com/puddleduckvineyard

**Puddleduck Vineyard open 7 days 10am – 5pm**  
Quackingly family friendly fun for all  
992 Richmond Road Richmond Tasmania  
[www.puddleduckvineyard.com.au](http://www.puddleduckvineyard.com.au)

## 7 POOLEY WINES

📍 1431 Richmond Road  
Richmond  
(03) 6260 2895  
cellardoor@pooleywines.com.au



**Open:** 10am-5pm daily.  
**Closed:** Good Friday and Christmas Day.

Our historic cellar door is located in the heart of the Coal River Valley. Join us for in-depth structured tastings, local cheeses and charcuterie boards daily, as well as artisan wood-fired pizzas on weekends. Pooley Wines also offers luxury accommodation and fine dining across the road at the lovingly restored Prospect House Private Hotel.

[WWW.POOLEYWINES.COM.AU](http://WWW.POOLEYWINES.COM.AU)

X12

## 8 NOCTON VINEYARD

📍 373 Colebrook Road  
Richmond  
(03) 6260 2688  
cellardoor@noctonwine.com.au



**Open:** 10am-4pm daily.  
**Closed:** Christmas Day, Boxing Day and Good Friday.

We invite you to our vineyard to taste our unique wines. Book a cheese platter and take a seat on our deck overlooking the vines. Meet our friendly staff. Nocton has produced many award-winning wines - Pinot Noir, NV Sparkling & Chenin Blanc. A wine for everyone to enjoy.

[WWW.NOCTONWINE.COM.AU](http://WWW.NOCTONWINE.COM.AU)

X12



*Tasmania's  
hidden  
brilliance*



## RIVERSDALE ESTATE TASMANIA

*Discover a truly unique French experience,  
mouth watering food, wine to match and  
spectacular water views, only 18 mins from  
Hobart. Award Winning Wines – Tasmania's  
most awarded Chardonnay.*



THE CELLAR  
DOOR



THE FRENCH  
BISTRO

P 6248 5555 | 222 Denholms Road Cambridge

[www.riversdaleestate.com.au](http://www.riversdaleestate.com.au)



# GASWORKS CELLAR DOOR

ESTABLISHED IN 2011




Choose from Tasmania's best online wine selection -  
Over **500 wines** from more than **100 Tasmanian producers**



## BUY TASMANIAN WINE ONLINE

Call 03 6225 9944 or email us at [cellardoor@vantagegroup.com.au](mailto:cellardoor@vantagegroup.com.au)



 [gasworkscellardoor.com.au](http://gasworkscellardoor.com.au)

**10% discount** plus free  
delivery Australia wide\*

\*When you purchase 6 or more bottles  
and enter the code **22WINE22**

Licence: 7111020X Gasworks - Hobart  
2 Macquarie Street Hobart TAS 7000

## 9 DOMAINE A

📍 105 Tea Tree Road  
Campania  
0484 001 944  
cellardoor@domaine-a.com.au



**Open:** 11am-5pm Saturday and Sunday.  
**Closed:** Christmas Day.

Established in 1973, Stoney Vineyard is the oldest in Tasmania's Coal River Valley. From this storied site, Domaine A has built an international reputation for its world class stable of mature, Bordeaux-style cool-climate wines.

[WWW.DOMAINE-A.COM.AU](http://WWW.DOMAINE-A.COM.AU)

## 10 PRESSING MATTERS

📍 665 Middle Tea Tree Road  
Tea Tree  
0474 380 109  
mail@pressingmatters.com.au



**Open:** By appointment between 10am-5pm Thursday to Sunday. Other days by arrangement.  
**Closed:** Christmas Day, Boxing Day and Easter Sunday.

38 trophies (including 10 Most Successful Tasmanian Exhibitor) and over 200 medals, confirm the quality of Rieslings and Pinot Noir produced in our 7.4ha vineyard. Tastings welcomed by appointment - no obligation to purchase.

[WWW.PRESSINGMATTERS.COM.AU](http://WWW.PRESSINGMATTERS.COM.AU)

## 11 DERWENT ESTATE

📍 329 Lyell Highway  
Granton  
(03) 6263 5802  
cellarclub@derwentestate.com.au



**Open:** 10am-5pm daily October to April; 11am-4pm daily May to September.  
**Closed:** Christmas Day, Boxing Day and Good Friday.

Winemaker John Schuts and Viticulturist Andrew Hanigan are producing world class cool climate wines in our purpose-built onsite straw-bale winery set on the picturesque banks of the Derwent River just 20 minutes north of Hobart.

[WWW.DERWENTESTATE.COM.AU](http://WWW.DERWENTESTATE.COM.AU)

PRESSING MATTERS  
Coal River Valley, Tasmania



[pressingmatters.com.au](http://pressingmatters.com.au)

## 12 MOORILLA

📍 655 Main Road  
Berriedale  
(03) 6277 9900  
cellardoor@mona.net.au



**Open:** 12pm-5pm Friday to Monday.  
**Closed:** Christmas Day.

Moorilla is a winery with a museum attached. Moorilla's owner, David Walsh, is also the creator of Mona. Moorilla creates small-batch, cool-climate wines with new-world fruit and old-world complexity, showcasing the terroir of its two vineyards.

[WWW.MOORILLA.COM.AU](http://WWW.MOORILLA.COM.AU)

## 13 GLAETZER-DIXON

📍 93 Brooker Avenue  
Hobart  
0417 852 287  
nick@gdfwinemakers.com



**Open:** 7 days by appointment. Last minute bookings welcome.  
Phone or text ahead 0417 852 287.

In Hobart, Glaetzer-Dixon has been named Southern Tasmania's best wine tasting experience by Gourmet Traveller Wine.

- Winner of the 50th Jimmy Watson Memorial Trophy
- Gourmet Traveller Wine Young Winemaker of the Year

[WWW.GDFWINEMAKERS.COM](http://WWW.GDFWINEMAKERS.COM)

X12

## 14 HOME HILL WINERY

📍 38 Nairn Road  
Ranelagh  
(03) 6264 1200  
info@homehillwines.com.au



**Open:** Cellar Door 10am-5pm daily.  
Restaurant Thursday to Monday.  
**Closed:** Christmas Day and Good Friday.  
Please check website for any changes.

Tasmania's most awarded boutique winery 30 minutes from Hobart. We are off the beaten track – search for us in your app "Huon Valley Tasmania". 99 points 2017 Kelly's Reserve Pinot Noir – James Halliday Wine Companion. Winner of the Jimmy Watson Trophy 2014.

[WWW.HOMEHILLWINES.COM.AU](http://WWW.HOMEHILLWINES.COM.AU)

## 15 KATE HILL WINES

📍 21 Dowlings Road  
Huonville (on the Huon Highway)  
0448 842 696  
info@katehillwines.com.au



**Open:** 11am-4pm Wednesday to Sunday.  
Other times by appointment.

Nestled amongst the vines with spectacular views of the surrounding countryside, this intimate cellar door is the ideal spot to enjoy a glass of wine with friends. Noted for their balance, elegance and approachability, Kate's wines include Sparkling, Riesling, Chardonnay, Pinot Noir and Shiraz.

[WWW.KATEHILLWINES.COM.AU](http://WWW.KATEHILLWINES.COM.AU)

X12

# MEET OUR WINE PEOPLE

## GLAETZER DIXON

In Hobart, winemaker Nick Glaetzer and his wife Sally (née Dixon) have turned a 1940s ice factory into an award-winning urban winery and tasting room, which has once again been named Best Tasting Experience in Southern Tasmania by Gourmet Traveller Wine.



## BREAM CREEK

📍 321 Marion Bay Road  
Bream Creek  
0419 363 714  
[rafe@breamcreekvineyard.com.au](mailto:rafe@breamcreekvineyard.com.au)

No cellar door at present – visit our website for more information.

[WWW.BREAMCREEKVINEYARD.COM.AU](http://WWW.BREAMCREEKVINEYARD.COM.AU)

## BRINKTOP WINES

📍 66 Brinktop Rd  
Penna  
0407 224543  
[gill@brinktop.com.au](mailto:gill@brinktop.com.au)

**Open:** 12pm–5pm most Friday afternoons.  
By appointment other times.

[WWW.BRINKTOP.COM.AU](http://WWW.BRINKTOP.COM.AU)

X12

## CLEMENS HILL

📍 686 Richmond Road  
Cambridge  
0437 008 069  
[aurelia.dettorre@gmail.com](mailto:aurelia.dettorre@gmail.com)

**Open:** By appointment.

[WWW.CLEMENSHILL.COM.AU](http://WWW.CLEMENSHILL.COM.AU)

X12

## CRAIGOW VINEYARD

📍 528 Richmond Road  
Cambridge  
0418 126 027  
info@craigow.com.au

**Open:** 11am–4pm weekends.  
Other times by appointment.  
**Closed:** Public holidays.

[WWW.CRAIGOW.COM.AU](http://WWW.CRAIGOW.COM.AU)

## MERRIWORTH WINES

📍 63 Merriworth Road  
Tea Tree  
0406 657 774  
contact@merriworth.com.au

**Open:** By appointment.

[WWW.MERRIWORTH.COM.AU](http://WWW.MERRIWORTH.COM.AU)

X12

## INVERCARRON WINES

📍 1329 Elderslie Road  
Broadmarsh  
0418 129 344  
enquiries@invercarronfarm.com.au

**Open:** By appointment only.

[WWW.INVERCARRONWINES.COM.AU](http://WWW.INVERCARRONWINES.COM.AU)

## MEWSTONE WINES

📍 11 Flowerpot Jetty Road  
Flowerpot  
0425 253 218  
matthew@mewstonewines.com.au

**Open:** Opening October 2021. 11–4pm  
Thursday to Sunday. Bookings encouraged.

[WWW.MEWSTONEWINES.COM.AU](http://WWW.MEWSTONEWINES.COM.AU)

## LAUREL BANK

📍 130 Black Snake Road  
Granton  
(03) 6263 5977  
info@laurelbankwines.com.au

**Open:** Cellar door open by appointment only.

[WWW.LAURELBANKWINES.COM.AU](http://WWW.LAURELBANKWINES.COM.AU)

## PETRICHOR WINES

📍 41 Rosewood Lane  
Tea Tree  
0405 365 717  
kate@petrichorwines.com.au

**Open:** By appointment only.

[WWW.PETRICHORWINES.COM.AU](http://WWW.PETRICHORWINES.COM.AU)

## ROSLYN 1823

📍 409 White Kangaroo Road  
Campania  
0418 713 566  
[wine@roslyn1823.com.au](mailto:wine@roslyn1823.com.au)

**Open:** Tours and tastings by appointment via our website or 0418 713 566.

[WWW.ROSLYN-1823.COM](http://WWW.ROSLYN-1823.COM)

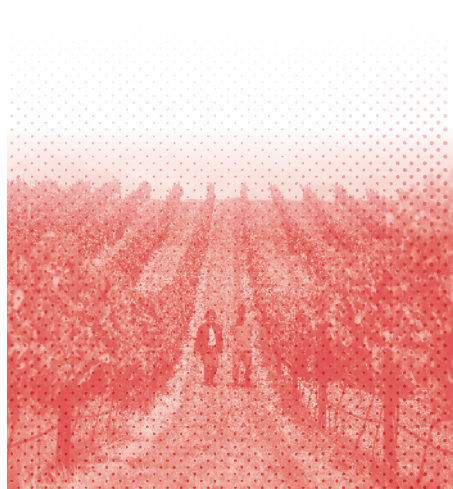
X12

## TOLPUDDLE VINEYARD

📍 37 Back Tea Tree Road  
Richmond  
(08) 8155 6003  
[info@tolpuddlevineyard.com](mailto:info@tolpuddlevineyard.com)

No tasting facility at present – visit our website for more information.

[WWW.TOLPUDDLEVINEYARD.COM](http://WWW.TOLPUDDLEVINEYARD.COM)



## HOME HILL WINERY



WE ARE OFF THE BEATEN TRACK BUT IT'S WORTH THE DRIVE TO FIND US.

Iconic Pinot Noirs rated 99 & 97 points in Halliday Wine Companion. Linger over lunch and enjoy our region's fresh produce in our Restaurant.

38 Nairn Road, Ranelagh  
T (03) 6264 1200  
E [info@homehillwines.com.au](mailto:info@homehillwines.com.au)  
[homehillwines.com.au](http://homehillwines.com.au)



## SPRING BAY DISTILLERY – HOBART



AWARD-WINNING NEW WORLD DISTILLERY.

Established in 2015, Spring Bay Distillery is a multiple award-winning new world distillery. We offer some of Tasmania's finest single malt whisky and gin. Tours and tastings by appointment.

205 Kennedy Drive, Cambridge, Tasmania  
T 0417 507 700  
E [dean@springbaydistillery.com.au](mailto:dean@springbaydistillery.com.au)  
[springbaydistillery.com.au](http://springbaydistillery.com.au)



## BANGOR VINEYARD SHED



STUNNING VIEWS AND A WARM WELCOME.

Bangor Shed is an award-winning cellar door and restaurant, with stunning views and a warm welcome. Wine tasting and sales daily. Restaurant open daily.

20 Blackman Bay Road, Dunalley TAS 7177  
T (03) 6253 5558  
E [info@bangorshed.com.au](mailto:info@bangorshed.com.au)  
[bangorshed.com.au](http://bangorshed.com.au)



# EAST COAST

## *Wine trail*

IT'S PICTURE PERFECT - WHITE SAND BEACHES AND OPEN ENDLESS BLUE HORIZONS. PLACES THAT MAKE YOU FEEL LIKE YOU'RE THE FIRST PERSON TO LEAVE A FOOTPRINT. NATIONAL PARKS FILLED WITH WONDERS, AND SEASIDE TOWNS FILLED WITH WELCOME. A GOURMET FOOD BOWL BURSTING WITH THE BEST LOCAL FARE.

Here, you can experience one of Australia's greatest road trips – a journey that will lead you to places and moments you'll never forget. Tasmania's East Coast is a place of stories, encounters and treasures. A place where small, unexpected moments become lifelong memories and where taking a break can not only refresh but reinvent.

When you embark on the Great Eastern Drive, you'll need to come with an appetite. This journey will lead you to many of Tasmania's most delicious experiences in some of its most beautiful locations.

The East Coast's mild climate creates perfect growing conditions for the state's premium fresh produce, from sweet berries and nuts to award-winning cheeses and the freshest seafood imaginable. Did we mention wine?

The region has long attracted passionate growers, producers, winemakers, cheesemakers and chefs - indulge yourself with their creations. Take a weekend, a few days or longer to explore, feast and wander. Break your journey at a B&B with an ocean view, a luxury lodge or coastal retreat and, when you need time to digest all that delicious produce, grab a taste of some of the region's most memorable experiences – kayak along the coast, take a cruise to the east coast's famed beaches, or work up a fresh appetite on some of Australia's best walks.

Take to the road on the Great Eastern Drive and experience a true food and wine lover's adventure.

For more local touring information head to [eastcoasttasmania.com](http://eastcoasttasmania.com).

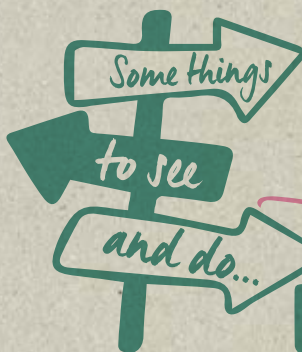


Our wine producers would love to give you the best possible experience, so let them know when you're coming! Be sure to contact cellar doors before you visit, as they may have limited capacity and require tastings, tours and experiences to be pre-booked.

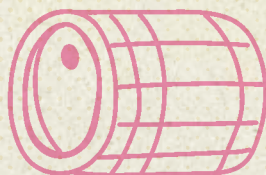
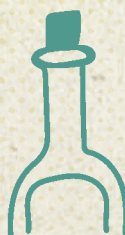
## Take Me Home



Wine producers with this icon displayed are participants in the Tasmanian Mixed Dozen freight scheme. This allows you to purchase a bottle or two from different vineyards as you travel around and have wine dispatched to your home address once you've reached a dozen bottles. Present your purchased wines (in dozen lots) at the last participating vineyard on your travels from which you purchase wine — they'll let you know the cost of freight and it will be sent straight to you.



- From Orford, take a cruise to Maria Island to observe wombats and wallabies as they graze the Darlington settlement. Don't miss the Painted Cliffs and Fossil Cliffs.
- Visit the beautiful seaside towns of Swansea, Bicheno, Scamander and St Helens — all rich in history with their beaches, cafes, churches and cottages.
- Meet some of the local wildlife at the nightly fairy penguin parade in Bicheno.
- Enjoy the many walks and spectacular views on offer from the Cape Tourville lighthouse, on the edge of the Freycinet National Park, to the spectacular white sands of Wineglass Bay, Binalong Bay and the Bay of Fires.
- Venture into the Freycinet National Park by cruise boat, sea kayak or on foot to make the unique journey to Wineglass Bay, one of the world's finest beaches.



# EAST COAST

*Wine trail*

*This way to  
Tamar Valley and  
North West Wine Trails.*

*To Bay of Fires  
(just a few  
minutes)*

*This way to the  
Southern  
Wine Trail...*

## LEGEND

- Open Daily
- Open Set Times
- Open by Appointment

## WINERIES

- 1 Darlington Vineyard
- 2 Boomer Creek Vineyard
- 3 Milton Vineyard
- 4 Spring Vale Vineyard
- 5 Craigie Knowe Vineyard
- 6 Gala Estate
- 7 Devil's Corner Cellar Door & Lookout
- 8 Freycinet Vineyard
- 9 Iron House Vineyard
- 10 Priory Ridge

## 1 DARLINGTON VINEYARD

📍 63 Holkham Court  
Orford  
0418 565 398  
darlingtonvineyard@gmail.com



**Open:** 11am-4pm, Thursday to Sunday,  
Monday to Wednesday by appointment.  
**Closed:** Christmas Day and Boxing Day.

Located on the East Coast Wine Trail at beautiful Orford overlooking the historic settlement of Darlington on Maria Island. The hand tended vines produce award winning, cool climate Pinot Noir, Chardonnay, Riesling and Sauvignon Blanc.

[WWW.DARLINGTONVINEYARD.COM.AU](http://WWW.DARLINGTONVINEYARD.COM.AU)

X12

## 2 BOOMER CREEK VINEYARD

📍 10922 Tasman Highway  
Little Swanport  
0423 912 360  
hello@boomercreekvineyard.com.au



**Open:** 11am-5pm daily in peak season; 11am-4pm Wednesday to Sunday during off season.  
(check website or Google for up-to-date hours).  
**Closed:** 25 July to 31 August, Christmas Eve, Christmas Day and Boxing Day.

Enjoy sampling our award-winning wines and local platter delicacies in our architecturally designed and family built cellar door, whilst taking in the calming country landscape and beautiful coastal views of Schouten Island and Freycinet Peninsula.

[WWW.BOOMERCREEKVINEYARD.COM.AU](http://WWW.BOOMERCREEKVINEYARD.COM.AU)

X12

## 3 MILTON VINEYARD

📍 14635 Tasman Highway  
Swansea (13km Nth. of Swansea)  
(03) 6257 8298  
wine@miltonvineyard.com.au



**Open:** Cellar Door 10am-5pm daily in summer  
and 10.30am-4pm daily in winter.  
**Closed:** Christmas and Boxing Day.

The Dunbabin's produce premium quality award winning cool climate wines all grown on site. Enjoy a tasting overlooking the lake and vineyard. A seasonal menu is available September to May from our summer restaurant.

[WWW.MILTONVINEYARD.COM.AU](http://WWW.MILTONVINEYARD.COM.AU)

X12



## 4 SPRING VALE VINEYARDS

📍 130 Spring Vale Road  
Cranbrook  
(03) 6257 8208  
sales@springvalewines.com

**SPRING VALE**  
FREYCYNET COAST TASMANIA  
A family business

**Open:** 11am-4pm daily.  
**Closed:** Christmas and Boxing Day.

A family owned vineyard, situated just north of Swansea, producing Pinot Noir, Gewurztraminer, Pinot Gris, Chardonnay, Sauvignon Blanc and Sparkling. It features an original convict-built stable (c. 1842) converted for cellar door tastings.

[WWW.SPRINGVALEWINES.COM](http://WWW.SPRINGVALEWINES.COM)

X12

## 5 CRAIGIE KNOWE

📍 80 Glen Gala Road  
Cranbrook  
0499 901 109  
enquiries@craigieknowe.com.au

*Craigie Knowe*  
VINEYARD

**Open:** 11am-4pm Friday to Monday. Peak season open 7 days per week, refer to website to confirm opening hours.

**Closed:** Christmas and Boxing Day.

Family owned. Tastings, tours, platters, cheese boards and chocolate matched with wine, all in a beautiful relaxing location. Try fabulous pastries created onsite; Freycinet Coast Patisserie, matched to our wines or high tea with wine!

[WWW.CRAIGIEKNOWE.COM.AU](http://WWW.CRAIGIEKNOWE.COM.AU)

X12

*The Splendid*  
**GIN**  
TASMANIA



Exceptional Award Winning Tasmanian Gins

• Cellar Door • Tastings • Sales

Come say hi at Spring Vale Winery!



**THE FARM SHED**

EAST COAST WINE CENTRE

TASTINGS + SALES

WINE + WHISKY + GIN

WINE BAR

ART + DESIGN

WINE CLUB

53A Burgess Street Bicheno Tasmania

03 6375 1868

thefarmshedtass.com.au

## 6 GALA ESTATE

📍 14891 Tasman Highway  
Cranbrook  
0408 681 014  
hello@galaestate.com.au



**Open:** 10am–4pm daily, September to May,  
10am–4pm Saturday to Monday in June, July,  
August. Bookings essential – to keep us all safe!  
Book now to avoid disappointment.

As the second oldest family business in Tasmania, we have been living and loving this land for 200 years. Our pristine natural environment allows us to consistently produce some of Tasmania's best wines. Visit our Halliday 5 Star Winery and choose which wine flight best suits your taste? Gala Estate, inspiring Tasmania!

[WWW.GALAESTATE.COM.AU](http://WWW.GALAESTATE.COM.AU)

X12

## 7 DEVIL'S CORNER

📍 Sherbourne Road Apslawn  
(8km south of the Coles Bay turn off) *Devil's Corner*  
TASMANIA  
(03) 6257 8881  
info@devilscorner.com.au

**Open:** 10am–5pm daily.  
**Closed:** Christmas Day and Good Friday.

A guaranteed haven along the East Coast of Tasmania, Devil's Corner is home to some of the region's best wine and food experiences, 360-degree views, and all four seasons in one day.

[WWW.DEVILSCORNER.COM.AU](http://WWW.DEVILSCORNER.COM.AU)

X12



*Devil's Corner*  
TASMANIA

A guaranteed haven along the East Coast of Tasmania, Devil's Corner is home to some of the region's best wine and food experiences, 360-degree views, and all four seasons in one day.

Pre-booked wine tastings are preferred.

📱 @devilscornercellardoor  
📷 @devilscornerwine

Visit us at 1 Sherbourne Rd, Apslawn TAS 7190  
[www.devilscorner.com.au](http://www.devilscorner.com.au)

## 8 FREYCINET VINEYARD

📍 15919 Tasman Highway  
Between Bicheno and Swansea  
(7km south of the Coles Bay turn off)  
(03) 6257 8574  
[info@freycinetvineyard.com.au](mailto:info@freycinetvineyard.com.au)



**Open:** 10am-5pm daily.

**Closed:** Christmas Day.

Advance bookings required for groups.

Original viticultural pioneers of our region, the 16 hectare family owned vineyard is recognised for its 5-star award winning wines. 100% grown, produced and bottled on the Estate with uncompromising dedication and passion since 1979. Relax & enjoy great wines, Tasmanian cheeses, home grown extra virgin olive oil and great coffee!

[WWW.FREYCINETVINEYARD.COM.AU](http://WWW.FREYCINETVINEYARD.COM.AU)

X12

## 9 IRON HOUSE VINEYARDS

📍 21554 Tasman Highway  
Four Mile Creek 7215  
(03) 6372 2228  
[admin@white-sands.com.au](mailto:admin@white-sands.com.au)



**Open:** 10am-4pm Wednesday to Sunday.

Iron House Tasting Room at White Sands Estate offers a range of wines, beers, spirits and Single Malt Whiskies. Tasting paddles available. Come visit us today.

[WWW.IRONHOUSE.COM.AU](http://WWW.IRONHOUSE.COM.AU)

X12

## 10 PRIORY RIDGE

📍 280 Ansons Bay Road  
St. Helens (Route C843 or C849)  
(03) 6376 1916 / 0408 479 699  
[info@prioryridgewines.com](mailto:info@prioryridgewines.com)



**Open:** 11am-4pm daily during summer months.  
Visit our website for winter opening hours.

**Closed:** Christmas, Boxing Day and Good Friday.

Our grapes - our wines. Our boutique vineyard is only minutes from St. Helens and iconic Bay of Fires; offering tastings and sales of premium cool climate wines from a rustic cellar door which features ancestral memorabilia. Ample parking and picnic facilities.

[WWW.PRIORYRIDGEWINES.COM.AU](http://WWW.PRIORYRIDGEWINES.COM.AU)

X12

## KELVEDON ESTATE

📍 12371 Tasman Highway  
Swansea (10km south of Swansea)  
0428 387 747  
[info@kelvedonestate.com.au](mailto:info@kelvedonestate.com.au)

**Open:** By appointment only.

[WWW.KELVEDONESTATE.COM.AU](http://WWW.KELVEDONESTATE.COM.AU)

X12





**IRON HOUSE**  
TASTING ROOM

21554 Tasman Hwy,  
Four Mile Creek,  
Tasmania 7215

OPEN 9AM TO 5PM

ironhouse.com.au

## SPRING BAY DISTILLERY - SPRING BEACH



### AWARD-WINNING NEW WORLD DISTILLERY.

Established in 2015, Spring Bay Distillery is a multiple award-winning new world distillery. We offer some of Tasmania's finest single malt whisky and gin. Tours and tastings by appointment.

6 Hoods Rd, Spring Beach, Tasmania  
T 0418 270 054  
E [suzu@springbaydistillery.com.au](mailto:suzu@springbaydistillery.com.au)  
[springbaydistillery.com.au](http://springbaydistillery.com.au)



## THE LONG LUNCH WINE TOUR CO



### JOIN US ON A FULLY HOSTED WINE TOUR.

Visiting 4 wineries. Door-to-door service, lunch & tastings inclusive. Picking up from Bicheno, Coles Bay & Swansea. Group tours from \$130-\$180 and private tours \$275pp. Don't miss out on a superb day out, Book now!

T 0409225841  
E [info@longlunchtourco.com.au](mailto:info@longlunchtourco.com.au)  
[www.longlunchtourco.com.au](http://www.longlunchtourco.com.au)



winesave®  
is here!



- Australia's preferred wine preserver
- Over 10M bottles saved since 2009
- Made with 100% natural Argon gas
- Peace of mind to savour your wine
- FREE shipping to Tasmania (>\$50)
- Money-back satisfaction guarantee
- Wholesale available for trade (12+)
- New local resellers welcome

[winesave.com.au](http://winesave.com.au)

## FREYCINET MARINE FARM



### MOUTHWATERING FRESH SEAFOOD

Harvested daily, our own beautiful pacific oysters and Tasmanian blue mussels as well as scallops, rock lobster and abalone. You can enjoy on the deck or take away to enjoy later.

1784 Coles Bay Road, Coles Bay  
(03) 6257 0140  
[oysters@freycinetmarinefarm.com](mailto:oysters@freycinetmarinefarm.com)  
[freycinetmarinefarm.com](http://freycinetmarinefarm.com)



# TAMAR VALLEY

---

## *Wine trail*

NORTHERN TASMANIA IS A FEAST OF HISTORIC STREETSCAPES AND HERITAGE ESTATES, RICH FARMLAND, PREMIER COOL CLIMATE WINES, FRESH PRODUCE AND A HAVEN FOR DESIGNERS AND ARTISANS EAGER TO SHARE THEIR WORK.

Launceston (the largest city in the region) is a vibrant hub for food, wine and culture. There's also a touch of the wilderness, with Cataract Gorge not far from the city centre.

The city is located on the banks of *kanamaluka* / the Tamar River and is the gateway to the Tamar Valley and Pipers River, two of Tasmania's prettiest wine growing areas. Both banks of *kanamaluka* / the Tamar River and the wider valley are packed with things to see and do. Here you will find vineyards, lavender plantations, strawberry farms and orchards snuggled side-by-side.

The Tamar Valley is Tasmania's oldest wine growing area and a place where premium cool climate wines, outstanding fresh produce and award-winning restaurants go hand in hand. In fact, it's a holiday destination in its own right.

Cellar door tastings are a specialty of the area – there are some magnificent vineyards around the valley offering superb views and gourmet experiences. Many of the makers will greet you and happily spend time talking about their craft.

From the Tamar Valley to Pipers River in the north, through to Launceston and Relbia in the south, there are numerous vineyards all within easy driving distance of each other.

With rich farmlands, dedicated makers, good roads and light traffic, the Tamar Valley offers some of Tasmania's most enjoyable attractions.

For more local touring information head to [northerntasmania.com.au](http://northerntasmania.com.au).

# OUR GRAPES ARE PRECIOUS

Our grapes and vines need to be very carefully nurtured in order to produce the outstanding wines you'll be enjoying as you travel around. Please do not enter any vineyards, as you may unknowingly be carrying unwanted pests or diseases that could cause great damage.

*Look for this sign*



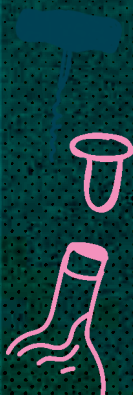
**PLEASE! KEEP OUT OF THE VINES**

WINE TASMANIA



RESPECT THE LAND #WINEANDWILDERNESS

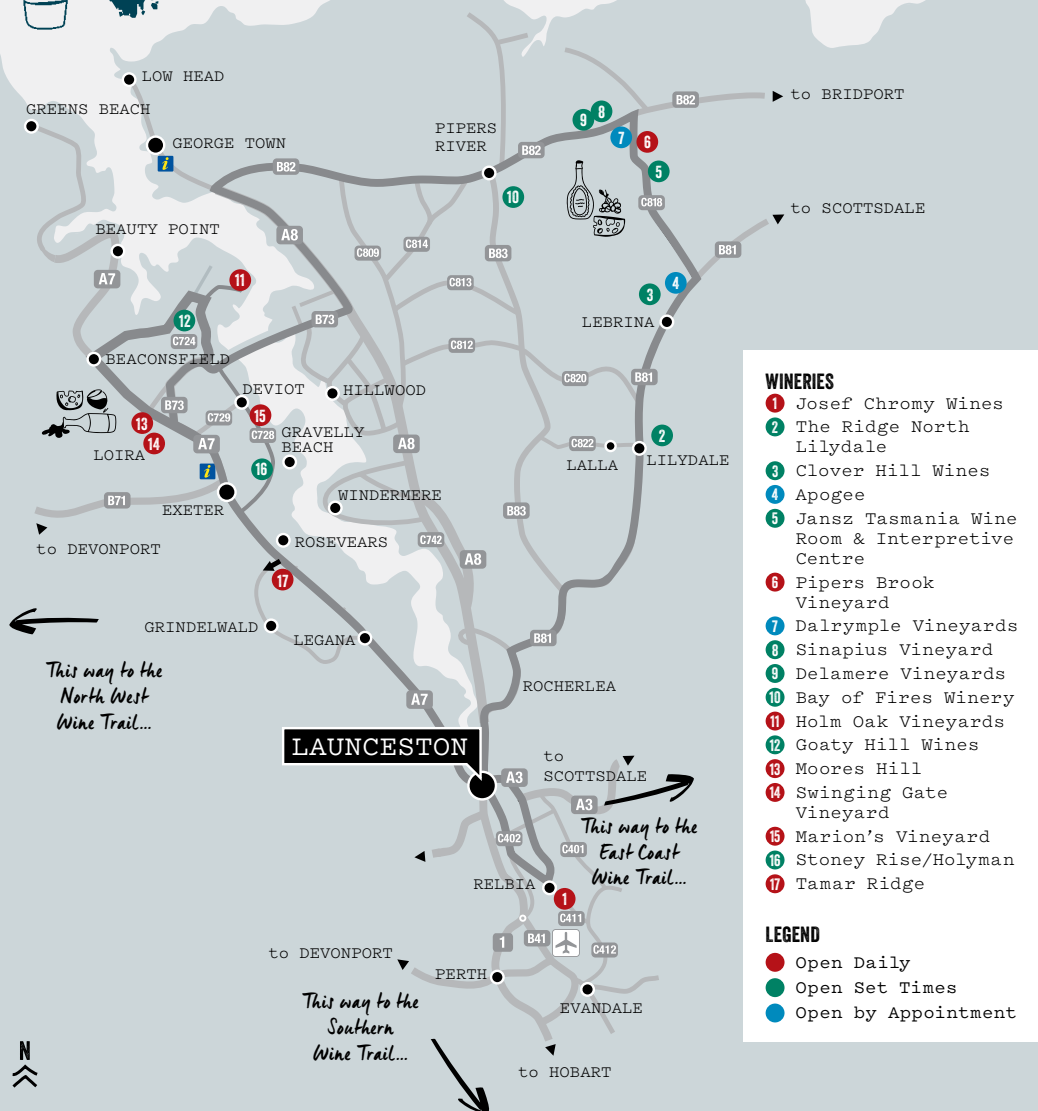
Our wine producers would love to give you the best possible experience, so let them know when you're coming! Be sure to contact cellar doors before you visit, as they may have limited capacity and require tastings, tours and experiences to be pre-booked.



- Cataract Gorge is a unique natural formation within a two-minute drive of central Launceston - a rare natural phenomenon in any city. With its rolling lawns, gardens, rotunda, swimming pool, footbridge and a chairlift across the river, not to mention the peacocks and wallabies - this may be Australia's most alluring urban reserve.
- Experience Tasmania's rich mining history at the Beaconsfield Mine and Heritage Centre.
- Visit Evandale, one of the best preserved late Georgian/early Victorian historic townships in Australia or the historic farming properties of Woolmers and Brickendon in Longford.
- Take to the water and cruise the hidden reaches of the Tamar River and the Tamar wetlands - a haven for local birdlife.
- Taste the region's freshest produce and wines every Saturday at Launceston's Harvest Market in Cimitiere Street.



## Wine trail





## DR ANDREW PIRIE APOGEE

Pioneering Tasmanian winemaker Andrew Pirie chose a distinguished site for his two-hectare sustainable vineyard named APOGEE ~ the culmination of his career. Here he handcrafts renowned prestige sparkling cuvées, bespoke wines expressing the exceptional terroir of the site. APOGEE is also heralded for its top tier Pinot Gris and Pinot Noir. Memories are made here...



## BOB & RITA RICHTER GREY SANDS

Bob & Rita came to Tasmania specifically to set up a high density, unirrigated, cool climate vineyard in 1987. Come and try their range of four different white and six different red table wines, which they pre-cellar for you, so they are ready to be enjoyed now or can be cellared longer. Their 'collectors' garden cellar door has extensive views over the Tamar Valley.



## OCKIE MYBURGH, JOSEF CHROMY WINES

Originally from South Africa, it was a rugby scholarship that got Ockie into a winemaking qualification. Sure, he sidelined it to play pro rugby, but once wine is in the blood, it takes more than a few knocks to get it out!

# MEET OUR WINE PEOPLE

## 1 JOSEF CHROMY WINES

📍 370 Relbia Road  
Relbia (Route C411)  
(03) 6335 8700  
wine@josefchromy.com.au



**Open:** 10am-5pm daily.

**Closed:** Christmas Day.

Restaurant closed Tuesday and Wednesday from May to August (cellar door open).

Spectacular winery, cellar door and hatted restaurant open 7 days. BOOKINGS ESSENTIAL for tastings and dining. Close to Launceston and the airport. Try one of our signature experiences. Ultimate Winery Experiences Australia Member.

[WWW.JOSEFCHROMY.COM.AU](http://WWW.JOSEFCHROMY.COM.AU)

## 2 THE RIDGE NORTH LILYDALE

📍 106 Browns Road  
North Lilydale  
0408 192 000  
info@theridgenorthlilydale.com



**Open:** 10:30am-5pm Sunday (check our website for exceptions, such as private functions). Other days by online appointment.

**Closed:** Christmas Day, Boxing Day and Easter Sunday.

### ALTITUDE – LATITUDE – ATTITUDE

Our boutique, award-winning vineyard nestled in the picturesque foothills of Mt. Arthur, where “we turn mountain air into wine.” ‘Tasmanian Traditional’ Sparkling, Pinot Noir and Chardonnay. Book online for exclusive tasting & walk experiences.

[WWW.THERIDGENORTHLILYDALE.COM](http://WWW.THERIDGENORTHLILYDALE.COM)

### Restaurant & Cellar Door

**OPEN 7 DAYS**



**Located just 10 mins South of Launceston**

Wine tastings, Lunch, Tours (**Book online**)

**03 6335 8700 | josefchromy.com.au**



**JOSEF CHROMY**  
TASMANIA

### 3 CLOVER HILL WINES

📍 60 Clover Hill Road

Lebrina

(03) 6395 6114

cellardoor@cloverhillwines.com.au



**Open:** 11am-4:30pm Wednesday to Sunday, with increased hours during the summer season. Please visit the website for up-to-date opening times.

**Closed:** Check the website for up-to-date holiday times.

Clover Hill is synonymous for producing elegant and refined sparkling wines with a reputation of uncompromising quality. Poised atop the valley, the Cellar Door's breathtaking position overlooks the vineyard and Bass Strait.

[WWW.CLOVERHILLWINES.COM.AU](http://WWW.CLOVERHILLWINES.COM.AU)

X12

### 4 APOGEE

📍 1083 Golconda Road

Lebrina

(03) 6395 6358

info@apogeetasmania.com



**Open:** By appointment

Taste some of Australia's finest cool climate sparkling and table wines in our 1860s original farm cottage. The Apogee tasting experience is intimate and picturesque.

[APOGEETASMANIA.COM](http://APOGEETASMANIA.COM)

X12



CLOVER HILL  
TASMANIA  
(1946)

Discover the elegance of Clover Hill,  
Tasmanian producer of méthode  
traditionnelle sparklings celebrated for  
finesse and uncompromising quality.

PIPERS RIVER  
NORTH-EAST TASMANIA  
[www.cloverhillwines.com.au](http://www.cloverhillwines.com.au)



## 5 JANSZ TASMANIA

📍 1216B Pipers Brook Road,  
Pipers Brook (Route C818)  
(03) 6382 7066  
info@jansz.com.au



**Open:** 11am-4pm Thursday to Sunday.  
**Closed:** Christmas Day and Good Friday  
(Anzac Day open 12-4pm).  
Bookings in advance preferred.

Overlooking a picturesque lake, the Jansz Wine Room offers visitors the opportunity to find out why Jansz sparkling is among the best. Enjoy a curated Jansz tasting or stay longer and enjoy a cheese platter.

[WWW.JANSZ.COM.AU](http://WWW.JANSZ.COM.AU)

## 6 PIPERS BROOK VINEYARD

📍 1216 Pipers Brook Road  
Pipers Brook  
(03) 6382 7555  
nadines@pipersbrook.com



**Open:** 7 days, please contact us for seasonal opening hours.  
**Closed:** Christmas Day, Boxing Day, New Years Day, Anzac Day and Good Friday.

Nadines Cafe located at Pipers Brook Vineyard offers a menu of fresh Tasmanian produce, bottle and glass sales and self-guided tastings of Pipers Brook Estate, Ninth Island, Pipers Tasmania and Kreglinger sparkling wines.

[WWW.KREGLINGERWINEESTATES.COM](http://WWW.KREGLINGERWINEESTATES.COM)

A photograph of the Mudbar Restaurant at night, with its lights reflecting on the water. Several sailboats are docked in the foreground. The restaurant's name "Mudbar" is written in a large, stylized script font, with "RESTAURANT" in a smaller, sans-serif font below it.

Launceston's premier waterfront dining experience.  
Tasmania's best Pinot Noir collection.  
BOOK ONLINE AT [MUDBAR.COM.AU](http://MUDBAR.COM.AU)  
03 6334 5066

## 7 DALRYMPLE VINEYARDS

📍 1337 Pipers Brook Road  
Pipers Brook (Route C818)  
(03) 6382 7229  
info@dalrymplevineyards.com.au



**Open:** By appointment (bookings essential).

Stand in this small vineyard and stare into the face of Bass Strait. Since 1987 the Dalrymple Vineyard has crafted some of Australia's most distinctive cool climate wines. To book please visit [www.dalrymplevineyards.com.au](http://www.dalrymplevineyards.com.au).

[WWW.DALRYMPLEVINEYARDS.COM.AU](http://WWW.DALRYMPLEVINEYARDS.COM.AU)

## 8 SINAPIUS VINEYARD

📍 4232 Bridport Road  
Pipers Brook (Route B82)  
0488 740 234  
tastings@sinapius.com.au



sinapius

**Open:** 11am-5pm Thursday, Friday and Monday  
12pm-5pm on weekends and Public Holidays.

**Closed:** Tuesday and Wednesday. Christmas Day and Boxing Day.

Groups and buses by appointment only.

100% estate grown and made. From sustainably grown, close planted vines, using minimal intervention winemaking, try our single vineyard wines at our family owned and operated vineyard and winery. A true expression of terroir.

[WWW.SINAPIUS.COM.AU](http://WWW.SINAPIUS.COM.AU)

X12

## 9 DELAMERE VINEYARDS

📍 4238 Bridport Road  
Pipers Brook (Route B82)  
0456 910 274  
info@delamerevineyards.com.au



**Open:** 10.30am-4.30pm Friday to Monday.  
Tuesday and Wednesday by appointment.

**Closed:** Christmas Day, Boxing Day, New Years Day and Good Friday. Bookings preferred.

Grown, vinified and bottled on our Pipers River estate. Delamere reflects our geography, passion and determination to produce world class wines. Come and experience for yourself one of Tasmania's unique grower producers.

5 stars 2020 Halliday Wine Companion

[WWW.DELAMEREVINEYARDS.COM.AU](http://WWW.DELAMEREVINEYARDS.COM.AU)

X12

**Valleybrook Wine On Wheels Tours**

Indulge your senses with our guided tours along the sensational Tamar Valley wine route, for a unique wine tasting experience.

*We Drive you to Drink*

0451 965 841 | [info@valleybrook.com.au](mailto:info@valleybrook.com.au)  
[www.valleybrook.com.au](http://www.valleybrook.com.au)



Premium tasting experience and tours.  
Bookings available Thursday - Monday

**BOOK ONLINE NOW!**

[www.bayoffireswines.com.au](http://www.bayoffireswines.com.au)  
or by calling 03 6382 7622



## 10 BAY OF FIRES / ARRAS WINERY

📍 40 Baxters Road  
Pipers River  
(03) 6382 7622  
[cellardoor@bayoffireswines.com.au](mailto:cellardoor@bayoffireswines.com.au)



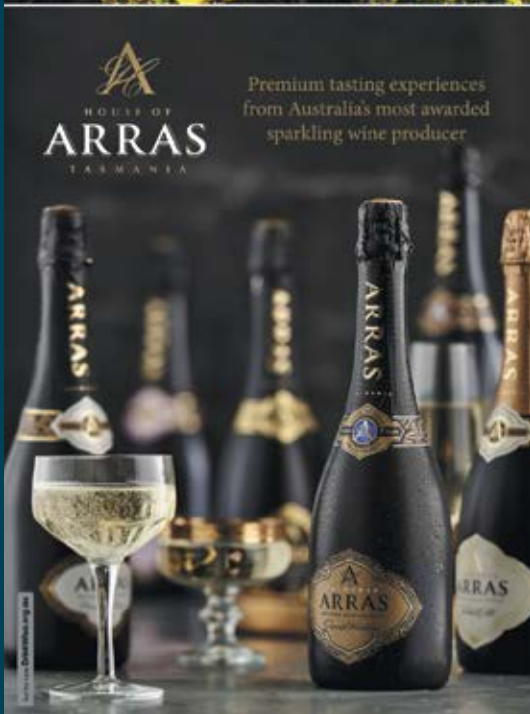
**Open:** 10am-5pm Thursday to Monday.  
Please book online.

**Closed:** Some public holidays. Website shows live availability.

We offer in depth cellar door tasting experiences ranging from 30 minutes to two hours, showcasing our premium range of cool climate wines from Bay of Fires and House of Arras. Tasting experiences available Thursday to Monday, 10am-5pm.

[WWW.BAYOFFIRESWINES.COM.AU](http://WWW.BAYOFFIRESWINES.COM.AU)

X12



34 Bookings available Thursday - Monday (03) 6382 7622

WINE TRAILS TASMANIA 2022

## 11 HOLM OAK VINEYARDS

📍 11 West Bay Road  
Rowella (Route C724)  
(03) 6394 7577

cellardoor@holm oakvineyards.com.au



**Open:** 11am-5pm daily September to May,  
11am-4pm daily June to August. Please check  
Facebook or Google to confirm.

**Closed:** Christmas Day and Boxing Day.

One of Tasmania's most highly regarded family wine producers. Our philosophy is to make single vineyard wines with personality and character that reflect us and the place where we live. Rustic, down-to-earth, genuine and authentic.

[WWW.HOLMOAKVINEYARDS.COM.AU](http://WWW.HOLMOAKVINEYARDS.COM.AU)

X12

## 12 GOATY HILL WINES

📍 530 Auburn Road  
Kayena  
1300 819 997  
info@goatyhill.com

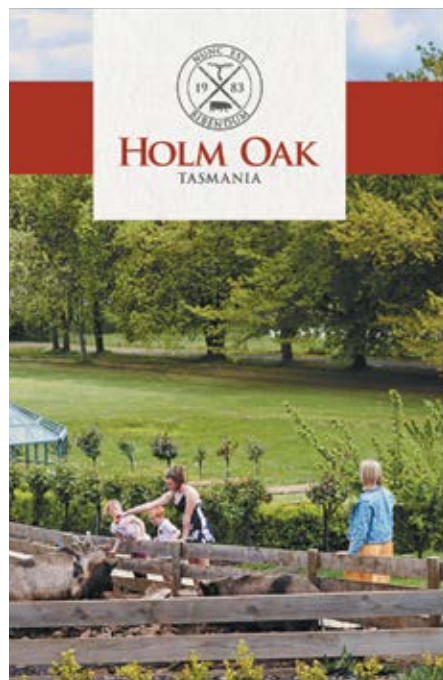


**Open:** 11am-5pm daily in Summer.  
11am-5pm Thursday to Monday in Winter, Spring  
and Autumn.

Nestled between valley views, vineyards and natural bushland, relax and enjoy our expressive cool climate wines and delicious platters, celebrating the many joys of the Tamar Valley.

[WWW.GOATYHILL.COM](http://WWW.GOATYHILL.COM)

X12



## Visit Our TAMAR VALLEY CELLAR DOOR

- Explore Tasmania's only sensory garden
- Book your VIP Wine Tasting
- Meet our pet friendly Pinot d'Pig

### Gourmet Traveller WINE

• Best Additional Experience  
(Northern Tasmania) 2019, 2021

Halliday Wine Companion 2021



11 West Bay Road, Rowella,  
Tasmania 7270 - Phone: 03 6394 7577



[HOLMOAKVINEYARDS.COM.AU](http://HOLMOAKVINEYARDS.COM.AU)

## 13 MOORES HILL

📍 3343 West Tamar Highway  
Sidmouth (Route A7)  
(03) 6394 7649  
[enquiries@moreshill.com.au](mailto:enquiries@moreshill.com.au)



**Open:** 11am-5pm daily.  
**Closed:** Christmas Day and Good Friday.

Visit Tasmania's first 100% off grid winery. Try a wine flight with a Tasmanian tasting plate from a range that showcases produce of the region. Enjoy the vineyard and valley views from the verandah.

[WWW.MOORESHILL.COM.AU](http://WWW.MOORESHILL.COM.AU)

X12

## 14 SWINGING GATE VINEYARD

📍 103 Glendale Road  
Sidmouth  
0419 599 710  
[swinginggatewine@gmail.com](mailto:swinginggatewine@gmail.com)



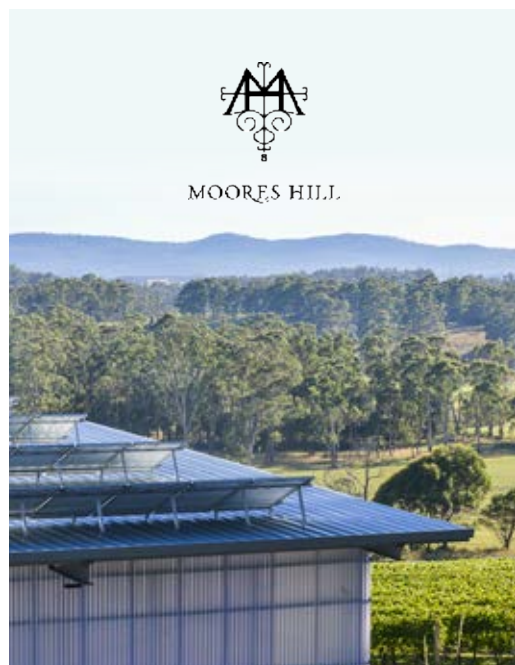
**Open:** 10am-5pm daily,  
except Sunday: 12pm-5pm.  
**Closed:** Christmas Day and New Years Day.

Swinging Gate is in the cool premium end of the Tamar Valley, producing stunning estate-grown wines from old vines. Enjoy guided tastings in the quirky cellar door with winemaker Doug and celebrity wine dog Nellie.

Luxurious glamping (domes) and day spa also on site.

[SWINGINGGATEWINES.COM.AU](http://SWINGINGGATEWINES.COM.AU)

X12



### POWERED BY THE SUN TASMANIA'S FIRST 100% OFF-GRID WINERY

A family owned vineyard  
producing delicious wines  
of depth, purity and personality.

Relax and enjoy views  
over the vineyard, wine flights  
and local produce platters.

Cellar door open 11am -5pm daily.  
3343 West Tamar Hwy, Sidmouth  
Just 35 min from Launceston  
PH: 03 6394 7649

[www.MooresHill.com.au](http://www.MooresHill.com.au)

## 15 MARION'S VINEYARD

📍 335 Deviot Road  
Deviot  
0437 540 422 / (03) 6394 7434  
[info@marionsvineyard.com.au](mailto:info@marionsvineyard.com.au)



**Open:** 11am-5pm daily.  
**Closed:** Christmas Day.

Marion's Vineyard invites you to one of Australia's most visually spectacular vineyard sites overlooking the Tamar River. Planted in 1979, we produce sparkling, aromatic whites, full bodied reds including Syrah and Tempranillo. Mediterranean platters served in Summer. Come for the wines, stay for the view and, like us, you may never want to leave.

[WWW.MARIONSVINEYARD.COM.AU](http://WWW.MARIONSVINEYARD.COM.AU)

X12

## 16 STONEY RISE/HOLYMAN

📍 96 Hendersons Lane  
Gravelly Beach (Route C728)  
0418 853 924  
[info@stoneyrise.com](mailto:info@stoneyrise.com)



**Open:** 10am-5pm Thursday to Monday.  
**Closed:** Closed Tuesday and Wednesday, Christmas Day. Groups by appointment only.

The Stoney Rise Cellar Door is more than your average cellar door, making it the perfect place to spend the day with good food and drinks. Taste the current range of Stoney Rise + Holyman wines or check out the drinks list with favourites from around the globe, think Germany to the Jura, Champagne to Chablis.

[WWW.STONEYRISE.COM](http://WWW.STONEYRISE.COM)

X12



Tastings  
Small plates  
Extensive Drinks List

OPEN  
Thursday to Monday  
10.00am - 5.00pm

Hendersons Lane, Gravelly Beach  
0418 853 924 @stoneyrise\_wine  
25 minutes north of Launceston



## 17 TAMAR RIDGE

📍 1a Waldhorn Drive,  
Rosevears (Route A7)  
(03) 6330 0300  
info@tamarridge.com.au



**Open:** Cellar Door 10am-5pm daily.

**Closed:** Christmas Day and Good Friday.

Group bookings by appointment only.

With spectacular views of the Tamar Valley our cellar door offers tastings of the award-winning wines of Tamar Ridge and Pirie Tasmania. Selected older vintages of Pinot Noir are available.

Seasonal menu available 12pm-3pm.

[WWW.TAMARRIDGE.COM.AU](http://WWW.TAMARRIDGE.COM.AU)

X12



**TR**

ART OF WINEMAKING / SCIENCE OF DISCOVERY

**TamarRidge Tasmania**

### Where the art of winemaking meets the science of Discovery.

At Tamar Ridge we've balanced the art of winemaking with the science of discovery to master a nuanced and truly extraordinary grape variety, Pinot Noir. But it takes more than mere brain power and creative flare to succeed – it takes obsession. Obsession with the soil at our feet, the grapes on our vines and the wonders and challenges Tasmania's climate brings.

Visit us at 1 Waldhorn Drive, Rosevears TAS  
[tamarridge.com.au](http://tamarridge.com.au)

## CHARTLEY ESTATE

📍 38 Blackwood Hills Road,  
Rowella  
0418 124 690  
lkossmann@hotmail.com

**Open:** By appointment.

[WWW.CHARTLEYESTATEVINEYARD.COM.AU](http://WWW.CHARTLEYESTATEVINEYARD.COM.AU)

## GREY SANDS

📍 6 Kerrison's Road,  
Glengarry  
0407 96 1167  
info@greysands.com.au

**Open:** By appointment only. Please call to book.

[WWW.GREYSANDS.COM.AU/SHOP-TASMANIAN-WINES/](http://WWW.GREYSANDS.COM.AU/SHOP-TASMANIAN-WINES/)

## VELO WINES

📍 755 West Tamar Highway  
Legana (Route A7)  
(03) 6330 1582  
leganaestate@gmail.com

**Open:** Cellar Door is open daily.

**Closed:** Some Public Holidays - please see our social media pages or website for opening hours.

[WWW.VELOWINES.COM.AU](http://WWW.VELOWINES.COM.AU)

X12

## WATERTON HALL

📍 61 Waterton Hall Road,  
Rowella (Route C724)  
0417 834 781  
info@watertonhall.com.au

**Open:** By appointment for group visits and tastings. 'History Walking & Tasting Tours' available.

[WWW.WATERTONHALL.COM.AU](http://WWW.WATERTONHALL.COM.AU)

X12

## BLACK COW BISTRO



WE SPECIALISE IN GRASS-FED TASMANIAN BEEF... in a small, stylish bistro setting with an award-winning wine list focusing on local producers, with knowledgeable, humble service.

70 George Street, Launceston TAS 7250  
T (03) 6331 9333  
E [info@blackcowbistro.com.au](mailto:info@blackcowbistro.com.au)  
[blackcowbistro.com.au](http://blackcowbistro.com.au)



## BEACONSFIELD MINE & HERITAGE CENTRE



COME AND PLAY WITH OUR HISTORY...

The Centre is a collection of experiences that allow you to enjoy and appreciate the history of Beaconsfield and the Tamar Valley.

West Street, Beaconsfield TAS 7277  
T (03) 6383 1473  
E [beaconsfield@wtc.tas.gov.au](mailto:beaconsfield@wtc.tas.gov.au)  
[beaconsfieldheritage.com.au](http://beaconsfieldheritage.com.au)



# MET OUR WINE PEOPLE



## JOE + LOU HOLYMAN STONEY RISE/HOLYMAN

Joe and Lou Holyman have been making wine from their Tamar Valley vineyard for nearly 20 years. Joe makes the wine but secretly prefers to work in the vineyard unless there is nude pigeage happening in the winery. Lou hangs out in the amazing Cellar Door when she isn't putting out fires Joe has started!

## NELLIE (WHAT A NOSE!) SWINGING GATE VINEYARD

Our approach is to make honest low intervention wines that reflect the area and the year in which they are made.

Sitting at 120 metres just above the mist, with cool nights and a sunny aspect creating the perfect environmental conditions to produce premium wine.



## TURNER STILLHOUSE



TURNER STILLHOUSE IS A MULTI-AWARD WINNING CRAFT SPIRITS DISTILLERY. Located just 15 minutes from Launceston in the scenic Tamar Valley. Our flagship product is Three Cuts Gin. **Tastings/tours offered daily.**

1A Waldhorn Drive, Grindelwald TAS 7277  
T (03) 6776 1414  
E [info@turnerstillhouse.com](mailto:info@turnerstillhouse.com)  
[turnerstillhouse.com](http://turnerstillhouse.com)



**TURNER  
STILLHOUSE**

## STILLWATER RESTAURANT & SEVEN ROOMS

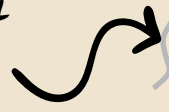


**EAT. DRINK. STAY.**

Contemporary Tasmanian cuisine for breakfast, lunch, dinner or ... sleep with us. Understated elegance in an 1830s flour mill on the banks of the Tamar in Launceston.

2 Bridge Road, Launceston, Tasmania  
(03) 6331 4153  
[info@stillwater.net.au](mailto:info@stillwater.net.au)  
[stillwater.com.au](http://stillwater.com.au)





# NORTH WEST

---

## *Wine trail*

THEY STAND BY A RECIPE IN THE NORTH WEST. LUSH. BOUNTIFUL. WELCOMING. UNTAMED. AND A GOOD DOSE OF FINE PRODUCE STRAIGHT FROM THE SOURCE. WE'RE TALKING FARM STALLS FLANKED BY RICH RED SOILS AND CRAYS PLUCKED STRAIGHT FROM THE OCEAN BY FRIENDLY SMALL-TOWN FOLK.

Beneath broad skies, nature's dance stretches from ancient Cradle Mountain to sandy coves dotting Bass Strait. In these parts, take your time and don't forget to breathe deeply. After all, the winds of the Roaring Forties deliver some of the freshest air on the planet.

After driving through the fertile growing areas of the region, it's only natural that you'll be keen to taste what they are producing. Local cooks and chefs will present you with the best the region has to offer. They showcase more than nourishment – they're offering you a link to the growers and the land they love. Every mouthful savoured in the North West becomes more special when you learn the stories behind the outstanding food and beverages on offer.

Experience first hand, the supremely fresh fruit and vegetables sourced from roadside stalls or the paddock to plate experience of eating food sourced from local ingredients. The region is fringed with mountain tiers where distillers use the soft water from snowmelt rivers that, in turn, nourish the surrounding fields and crops. Sample seaside berry farms, highland truffles, artisan cheese and the wine, definitely the wine.

Generosity and token dairy cows come standard.

That's the simple, pure, time-honoured recipe that awaits your visit.

For more local touring information head to [northwesttasmania.com.au](http://northwesttasmania.com.au).



Our wine producers would love to give you the best possible experience, so let them know when you're coming! Be sure to contact cellar doors before you visit, as they may have limited capacity and require tastings, tours and experiences to be pre-booked.

## Take Me Home



Wine producers with this icon displayed are participants in the Tasmanian Mixed Dozen freight scheme. This allows you to purchase a bottle or two from different vineyards as you travel around and have wine dispatched to your home address once you've reached a dozen bottles. Present your purchased wines (in dozen lots) at the last participating vineyard on your travels from which you purchase wine — they'll let you know the cost of freight and it will be sent straight to you.



- Walk to spectacular Dove Lake and take in the stunning wilderness views in the Cradle Mountain National Park.
- Sample some of the region's best farm produce including food and beverage stalls, hand-made baked goods and other crafts and hand-made products at the Burnie Farmers Market.
- Follow the Cradle Coast Tasting Trail – a flavoursome journey through rolling green fields from Table Cape to seaside berry farms, highland truffles, artisan cheese and tree-to-bottle ciders.
- Marvel at the 1,900 trees of the Tasmanian Arboretum at Eugenana, home to around 80 local bird species. Platypus can be seen most days in Founder's Lake.
- Stroll the shore in easy going seaside villages of Ulverstone, Penguin and Wynyard. Visit the popular Penguin market.





# GHOST ROCK

## TASMANIA

Established in 1999, Ghost Rock has grown to become one of the island's most exciting food and wine destinations. The passion for both can be seen first-hand in our highly awarded Cellar Door & Eatery. Be consumed by local produce and local passion at the Cradle Coast region's pioneer winery.



Open daily, 11am - 5pm  
Check website for winter trade hours.  
1055 Port Sorell Rd NORTHDOWN  
P 03 6428 4005 [ghostrock.com.au](http://ghostrock.com.au)  
f ghostrockwines i ghost\_rock\_tasmania

## 1 GHOST ROCK

📍 1055 Port Sorell Road  
Northdown  
(03) 6428 4005  
mail@ghostrock.com.au



**Open:** 11am–5pm, Thursday to Monday.

**Closed:** Christmas Day, Boxing Day,  
Good Friday and some public holidays.

Situated on the remarkable Cradle Coast, just 10 minutes from the Spirit of Tasmania terminal. The Cellar Door & Eatery captures stunning views of the vineyards, ocean, and rolling countryside. In-depth tastings and restaurant lunch available.

[WWW.GHOSTROCK.COM.AU](http://WWW.GHOSTROCK.COM.AU)

X12



# MEET OUR WINE PEOPLE



## JUSTIN ARNOLD + ALICIA PEARDON GHOST ROCK & SUPERNATURAL WINES

Alicia quit her job with Jamie Oliver (who does that, right?) to join Justin in driving this regional pioneer into a new era of winemaking and hospitality excellence. Together they are setting the standard in natural winemaking and local sourcing for their outstanding eatery.

## 2 LA VILLA WINES

📍 347 Mersey Main Road  
Spreyton  
0418 642 722  
lavillawines@iinet.net.au



**Open:** 11am-4pm Wednesday to Sunday.  
**Closed:** May-September, Christmas Day,  
Boxing Day and Good Friday.

We welcome you through the gates of La Villa to experience the ambience and taste our handcrafted, cool climate wines. Our seven hectare family owned vineyard is situated at Spreyton between Devonport and Latrobe – only a short distance from Spirit of Tasmania terminal.

Group bookings by appointment only

[WWW.LAVILLAWINES.COM.AU](http://WWW.LAVILLAWINES.COM.AU)

## 3 LEVEN VALLEY VINEYARD

📍 321 Raymond Road  
Gunns Plains  
(03) 6429 1140  
info@levenvalleyvineyard.com.au



**Open:** 11am-5pm on weekends or by appointment, October to May.  
**Closed:** June to September, Christmas Day and Easter Sunday.

A small family owned vineyard, on a north-facing hill overlooking picturesque Gunns Plains just 20 minutes south of Ulverstone. Come enjoy our wines and your picnic in the garden with views of the Leven River.

[WWW.LEVENVALLEYVINEYARD.COM.AU](http://WWW.LEVENVALLEYVINEYARD.COM.AU)



## EASTFORD CREEK VINEYARD

📍 269 Chapel Road  
Sassafras  
0400 915 704  
visit@eastfordcreek.com.au

Open: Opening at the end of 2021, Thursday to Sunday. See social media or our website for more details on opening times. Bookings encouraged.

[WWW.EASTFORDCREEK.COM.AU](http://WWW.EASTFORDCREEK.COM.AU)

## TASMANIAN WHISKY & SPIRITS ASSOCIATION



### DISCOVER TASMANIAN WHISKY & SPIRITS

It's the people that make Tasmania's whisky and spirits special. Discover these characters and their stories, with the love and the passion that goes into crafting every bottle.

T: 0405 365 717  
E: admin@twasa.net.au

[www.taswhiskyandspiritstrail.com.au](http://www.taswhiskyandspiritstrail.com.au)



## INDEX

Apogee .....	31
Bangor Vineyard Shed .....	9
Bay of Fires / Arras Winery .....	34
Boomer Creek Vineyard .....	21
Bream Creek .....	15
Brinktop Wines .....	15
Cape Bernier Vineyard .....	9
Chartley Estate .....	39
Clemens Hill .....	15
Clover Hill Wines .....	31
Coal Valley Vineyard .....	9
Craigie Knowe .....	22
Craigow Vineyard .....	16
Dalrymple Vineyards .....	33
Darlington Vineyard .....	21
Delamere Vineyards .....	33
Derwent Estate .....	13
Devil's Corner .....	23
Domaine A .....	13
Eastford Creek Vineyard .....	47
Freycinet Vineyard .....	24
Frogmore Creek .....	9
Gala Estate .....	23
Ghost Rock .....	45
Glaetzer-Dixon .....	14
Goaty Hill Wines .....	35
Grey Sands .....	39
Holm Oak Vineyards .....	35
Home Hill Winery .....	14
Invercarron Wines .....	16
Iron House Vineyards .....	24
Jansz Tasmania .....	32
Josef Chromy Wines .....	30
Kate Hill Wines .....	14
Kelvedon Estate .....	24
La Villa Wines .....	46
Laurel Bank .....	16
Leven Valley Vineyard .....	46
Marion's Vineyard .....	37
Merriworth Wines .....	16
Mewstone Wines .....	16
Milton Vineyard .....	21
Moore's Hill .....	36
Moorilla .....	14
Nocton Vineyard .....	11
Petrichor Wines .....	16
Pipers Brook Vineyard .....	32
Poolley Wines .....	11
Pressing Matters .....	13
Priory Ridge .....	24
Puddleduck .....	10
Riversdale Estate .....	10
Roslyn 1823 .....	17
Sinapius Vineyard .....	33
Spring Vale Vineyards .....	22
Stoney Rise/Holyman .....	37
Swinging Gate Vineyard .....	36
Tamar Ridge .....	38
The Ridge North Lilydale .....	30
Tolpuddle Vineyard .....	17
Velo Wines .....	39
Waterton Hall .....	39

# VINO TASMANIA

KEEP AN EYE OUT FOR  
THIS SYMBOL ON WINE  
BOTTLES, WEBSITES  
AND PROMOTIONAL  
MATERIAL, AS WELL AS  
AT CELLAR DOORS IN  
TASMANIA.



# Caring for our Land

Being located so far south, on an island exposed to the Roaring Forties, presents unique challenges for our growers and makers. Rain, lack of rain, hail, snow, wind (lots of wind), but also plentiful sunshine – it makes it hard and risky to craft these wines, but our people are very talented.

Part of their skill comes through application of the VinØ (pronounced vin zero) Tasmania Program, a way to measure, monitor and improve sustainability practices.

This program ensures that Tasmania's hard-working wine producers are doing everything they can to produce very high-quality wine without negative impacts on the environment or local community.

VinØ Tasmania program members understand the connection with the land and people and recognise that we are custodians with a responsibility to future generations. View further details at [vwww.winetasmania.com.au/vinzero](http://vwww.winetasmania.com.au/vinzero).

The VinØ Tasmania program provides a framework on the world's best possible practices across each of the following critical areas, as listed below. Tasmanian wine producers use this framework to monitor, measure, report, benchmark and constantly improve their sustainability practices.

The VinØ Tasmania program focuses on the following key areas of vineyard and winery management:

## THE WINERY

Ensuring that the grapes get into the bottle as efficiently and responsibly as possible.

## SOILS

Healthy soils for quality grapes.

## PEST & DISEASE

Managing pressures in an environmentally responsible manner.

## BIODIVERSITY

Using natural flora and fauna to support land & vineyard health.

## WATER

Measuring and minimising water use in vineyards.

## RECYCLING

Responsibly managing waste & recycling.

## PEOPLE

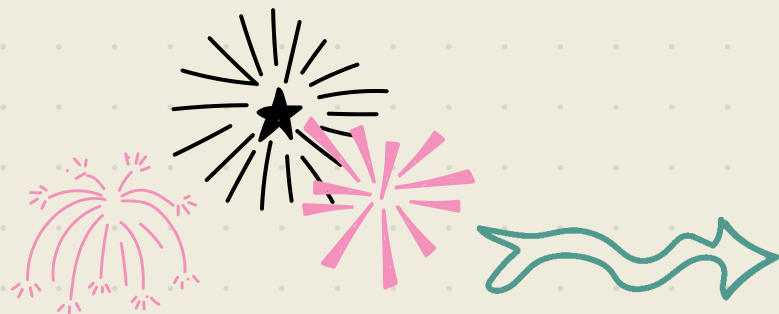
Looking after our valuable personnel & the broader community.

## EMISSIONS

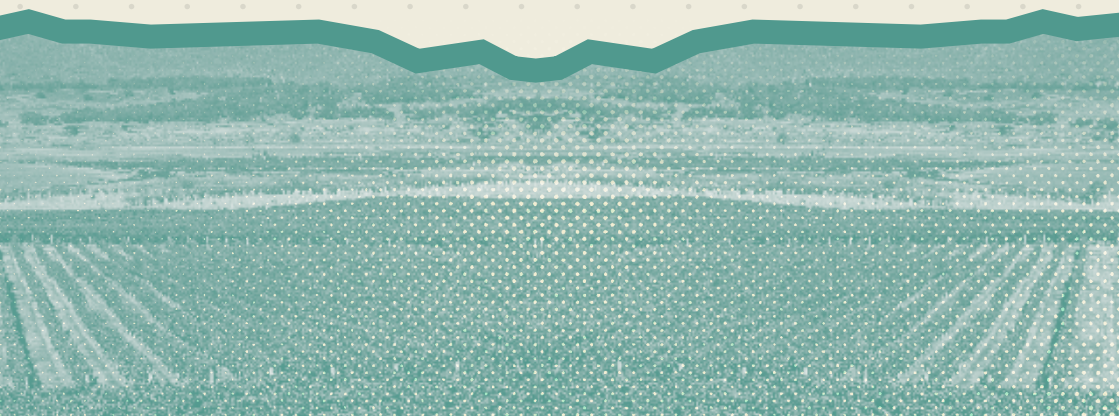
Measuring, managing, reducing & mitigating carbon emissions.

## BIOSECURITY

Protecting our valuable grapevines from unwanted nasties.



WINE MANIA  
TAS



[WINETASMANIA.COM.AU](http://WINETASMANIA.COM.AU)

