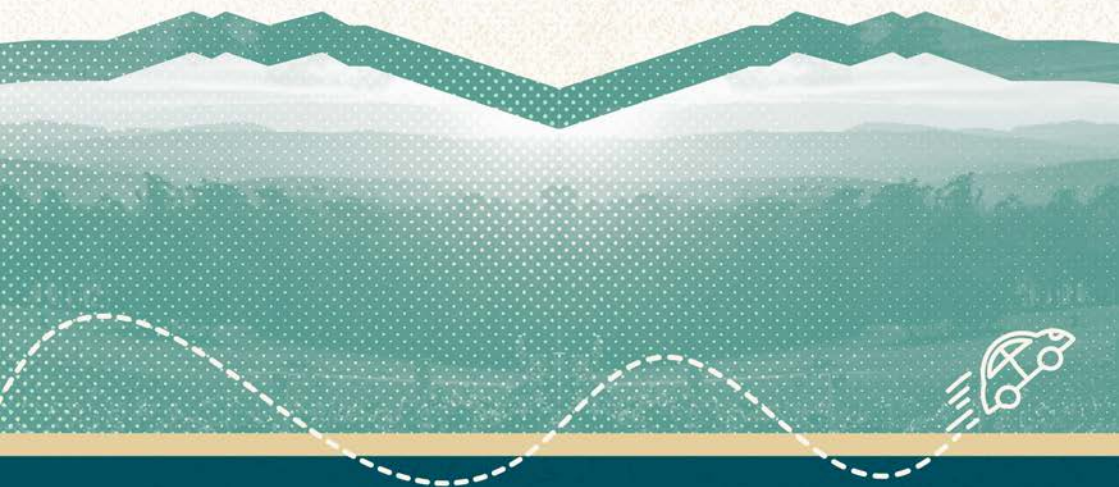




Tasmania's

WINE TRAILS

— 2023 —



WINE TASMANIA presents
your guide to exploring TASSIE WINE!!
with things to see and do along the way.

WINE TASMANIA

Established in 2006, Wine Tasmania is the peak body promoting the coolest wine region on the planet.

WINE TASMANIA

Level 5, 29 Elizabeth Street,
Hobart TAS 7000
T (03) 6223 3770
E mail@winetasmania.net.au

Information regarding the Tasmanian wine sector is also available at
WWW.WINETASMANIA.COM.AU

© 2022 Wine Tasmania

Wine Tasmania acknowledges the Aboriginal people as the traditional owners of lutruwita/Tasmania, our island home. Our vines have their feet in the ancient soils of lutruwita and benefit from the water that generously falls on this island. Our grapes breathe and thrive in the island's crisp fresh air and our vineyards are planted along our precious waterways, which moderate vineyard temperature and help to protect them from frosts. We therefore thank and pay our respects to the Tasmanian Aboriginal communities, elders past and present and recognise their deep and spiritual connection to this amazing place, lutruwita.

DISCLAIMER: Wine Tasmania has made every endeavour to ensure that details are correct at the time of printing (September 2022) but can accept no responsibility for any inaccuracy contained in this publication as a result of information supplied, and can accept no responsibility for subsequent changes or withdrawal of details or services shown.

CREDITS: Illustrations - Mikhail Seleznev and The Noun Project. Images courtesy Adam Gibson and Tourism Tasmania. All other images courtesy Wine Tasmania.

CHOOSE YOUR OWN ADVENTURE

Are you a pinotophile looking for a side of great Tassie produce with your tasting? Search the wine trails by experiences, on-site facilities and wine styles.



Take
Me
Home



Wine producers with this icon displayed are participants in the Tasmanian Mixed Dozen freight scheme. This allows you to purchase a bottle or two from different vineyards as you travel around and have wine dispatched to your home address once you've reached a dozen bottles. Present your purchased wines (in dozen lots) at the last participating vineyard on your travels from which you purchase wine — they'll let you know the cost of freight and it will be sent straight to you.



DISCOVER

Tasmania's wine trails



Contents

| | |
|--|-----------|
| VISITING TASSIE | 4 |
| NORTH WEST WINE TRAIL | 6 |
| TAMAR VALLEY WINE TRAIL | 13 |
| (includes Tamar Valley, Pipers River and Launceston) | |
| EAST COAST WINE TRAIL | 28 |

SOUTHERN WINE TRAIL **37**

(includes Coal River Valley, Derwent Valley, Huon Valley/d'Entrecasteaux Channel and Hobart)

| | |
|---------------------|----|
| VINO TASMANIA | 50 |
|---------------------|----|

CONGRATULATIONS ON EXPLORING AUSTRALIA'S BEST WINE REGION



WINE DIRECTORY

| | |
|----------------------------------|----|
| Apogee | 25 |
| Bangor Vineyard Shed | 46 |
| Bay of Fires / Arras Winery | 22 |
| Boomer Creek Vineyard | 35 |
| Bream Creek | 46 |
| Brinktop Wines | 47 |
| Broad Acres Vineyard..... | 11 |
| Cabbage Tree Hill Wines..... | 20 |
| Cape Bernier Vineyard | 45 |
| Chartley Estate | 26 |
| Clemens Hill | 47 |
| Clover Hill Wines | 25 |
| Coal Valley Vineyard | 45 |
| Craigie Knowe | 33 |
| Craigow Vineyard | 47 |
| Dalrymple Vineyards | 23 |
| Darlington Vineyard | 35 |
| Delamere Vineyards | 22 |
| Derwent Estate | 41 |
| Devil's Corner | 32 |
| Domaine A | 42 |
| Eastford Creek Vineyard | 9 |
| Freycinet Vineyard | 31 |
| Frogmore Creek | 45 |
| Gala Estate | 32 |
| Ghost Rock | 9 |
| Glaetzer-Dixon | 40 |
| Grey Sands Vineyard | 27 |
| Haddow + Dineen..... | 47 |
| Holm Oak Vineyards | 21 |
| Home Hill Winery | 40 |
| Invercarron Wines | 47 |
| Iron House Vineyards | 31 |
| Jansz Tasmania | 24 |
| Josef Chromy Wines | 17 |
| Kate Hill Wines | 40 |
| Kelvedon Estate | 35 |
| La Villa Wines | 11 |
| Leven Valley Vineyard | 12 |
| Mapleton Vineyard..... | 47 |
| Marion's Vineyard | 18 |
| Mayfield Estate | 35 |
| Merriworth Wines | 48 |
| Mewstone Wines | 40 |
| Milton Vineyard | 34 |
| Moore Hill | 20 |
| Moorilla | 41 |
| Nocton Vineyard | 42 |
| Petrichor Wines | 48 |
| Pipers Brook Vineyard | 24 |
| Poolley Wines | 44 |
| Pressing Matters | 41 |
| Priory Ridge | 31 |
| Puddleduck | 44 |
| Riversdale Estate | 45 |
| Sinapius Vineyard | 23 |
| Small Wonder Wines | 21 |
| Spring Vale Vineyards | 33 |
| Stargazer Wines..... | 49 |
| Stoney Rise Holyman | 18 |
| Swinging Gate Vineyard | 19 |
| Tamar Ridge | 17 |
| The Ridge North Lilydale | 26 |
| Tolpuddle Vineyard | 49 |
| Velo Wines | 27 |
| Waterton Hall | 27 |
| Winter Brook Vineyard..... | 19 |

(OK, we may be a little biased, but we are sure that you will thoroughly enjoy the delicious wine from our little island with latitude).

VISITING TASSIE

lutruwita / Tasmania (or Tassie, as the locals know it) is one of the most spectacular places in the world. Lush green corners of paradise, picture-perfect beaches, snow capped mountains, breathtaking forests, waterfalls and lakes – you'll find just about every kind of scenery across our landscape. Not to mention cute, cuddly and curious wildlife.

You'll quickly find that Tasmania's vineyards are generally not found on flat land but follow the slope of a hill or the curve of a valley. This makes for diverse and distinctive wines, with no two vineyards or vintages the same – you'll be able to taste the flavours of the season in each glass.

From converted heritage stables to ultra modern cellar doors, chat and kick the dirt with our wine producers to find out why they have chosen to grow grapes and make wine in these extreme conditions on the edge of the world.

Tasmanian wine is crafted to complement our island's produce, so find a world class view (there are plenty) and feast like a local! Pair a delicious Tassie Pinot Noir with slow pulled pork, a glass of sparkling with some freshly shucked oysters, Chardonnay with Tassie's famous scallop pies or local cheeses with a late harvest Riesling.

Although Tasmania is classified as one region, vineyards stretch right across the island. In this guide the seven distinct areas are divided into four wine touring trails. All are within easy reach of major centres and are located along the journey to some of Tasmania's iconic attractions and experiences.

*Remember...
Quality not Quantity*



DON'T BE THAT PERSON. In Tasmania, it is all about quality, not quantity. Wine Tasmania encourages responsible consumption of alcohol and recommends the following: don't drink on an empty stomach, drink plenty of water, use spittoons, take a guided wine tour with one of the many specialists (check out their ads in this Guide!) or, if you plan to drive, choose a designated driver.



Unbelievably, we almost didn't have a wine sector at all! A lot of people said it couldn't be done, that Tasmania was too cold for wine grapes, that it would never amount to anything! Despite these challenges, some brave and determined people made sure those people ate their words (and drank our delicious wine).

SO WHY ARE TASSIE'S WINES SO AWESOME?

- This island – and its climate – produces some of the best wines on the entire planet
- Our people (Tasmanians) are the best kind of people, particularly the ones that grow and make things
- Sparkling wine (yum)
- Pinot Noir (the “heartbreak” grape)
- Riesling, Chardonnay, Pinot Gris, Shiraz (or Syrah, for the refined) and all sorts of other wonderful, delicious grape varieties call Tasmania home

Check out Wine Tasmania's website – www.winetasmania.com.au – for further information on the island's wine scene, contact details for wine producers and more.

GET THE HARD TO GET

- We only produce a thimbleful of wine (1% of Australia's total wine), but it's the best (over 4% of Australia's wine value)
- We drink most of it ourselves – only 5% is exported, the rest is sold in Australia and much of it is only available in Tasmania itself

VARIETAL WINE TRAILS: FOLLOW YOUR OWN PATH



If you have a favourite wine or two, you can create your own itinerary focusing on your preferred tipples. Create your own

Sparkling or Pinot Noir Wine Trail – or whatever takes your fancy. All you have to do is visit www.winetasmania.com.au/wine-trails and select your favourite varieties.

OTHER THINGS TO SEE AND DO

You will find some information in this guide on other things you might like to see and do as you're travelling around. You'll also find loads of information to help you plan your visit at www.discovertasmania.com. You may also like to explore complementary food and beverage trails during your visit, such as the Tasmanian Cider Trail www.tascidertrail.com, Whisky Trail www.taswhiskytrail.com and Seafood Trail www.tsic.org.au.

P.S. don't forget to share your Tassie Wine adventures!



#tassiewine



NORTH WEST

Wine Trail

THEY STAND BY A RECIPE IN THE NORTH WEST. LUSH. BOUNTIFUL. WELCOMING. UNTAMED. AND A GOOD DOSE OF FINE PRODUCE STRAIGHT FROM THE SOURCE. WE'RE TALKING FARM STALLS FLANKED BY RICH RED SOILS AND CRAYS PLUCKED STRAIGHT FROM THE OCEAN BY FRIENDLY SMALL-TOWN FOLK.

Beneath broad skies, nature's dance stretches from ancient Cradle Mountain to sandy coves dotting Bass Strait. In these parts, take your time and don't forget to breathe deeply. After all, the winds of the Roaring Forties deliver some of the freshest air on the planet.

After driving through the fertile growing areas of the region, it's only natural that you'll be keen to taste what they are producing. Local cooks and chefs will present you with the best the region has to offer. They showcase more than nourishment – they're offering you a link to the growers and the land they love. Every mouthful savoured in the North West becomes more special when you learn the stories behind the outstanding food and beverages on offer.

Experience first hand the supremely fresh fruit and vegetables sourced from roadside stalls or the paddock to plate experience of eating food sourced from local ingredients. The region is fringed with mountain tiers where the soft water from snowmelt rivers nourishes the surrounding fields and crops. Sample seaside berry farms, highland truffles, artisan cheese and the wine – definitely the wine.

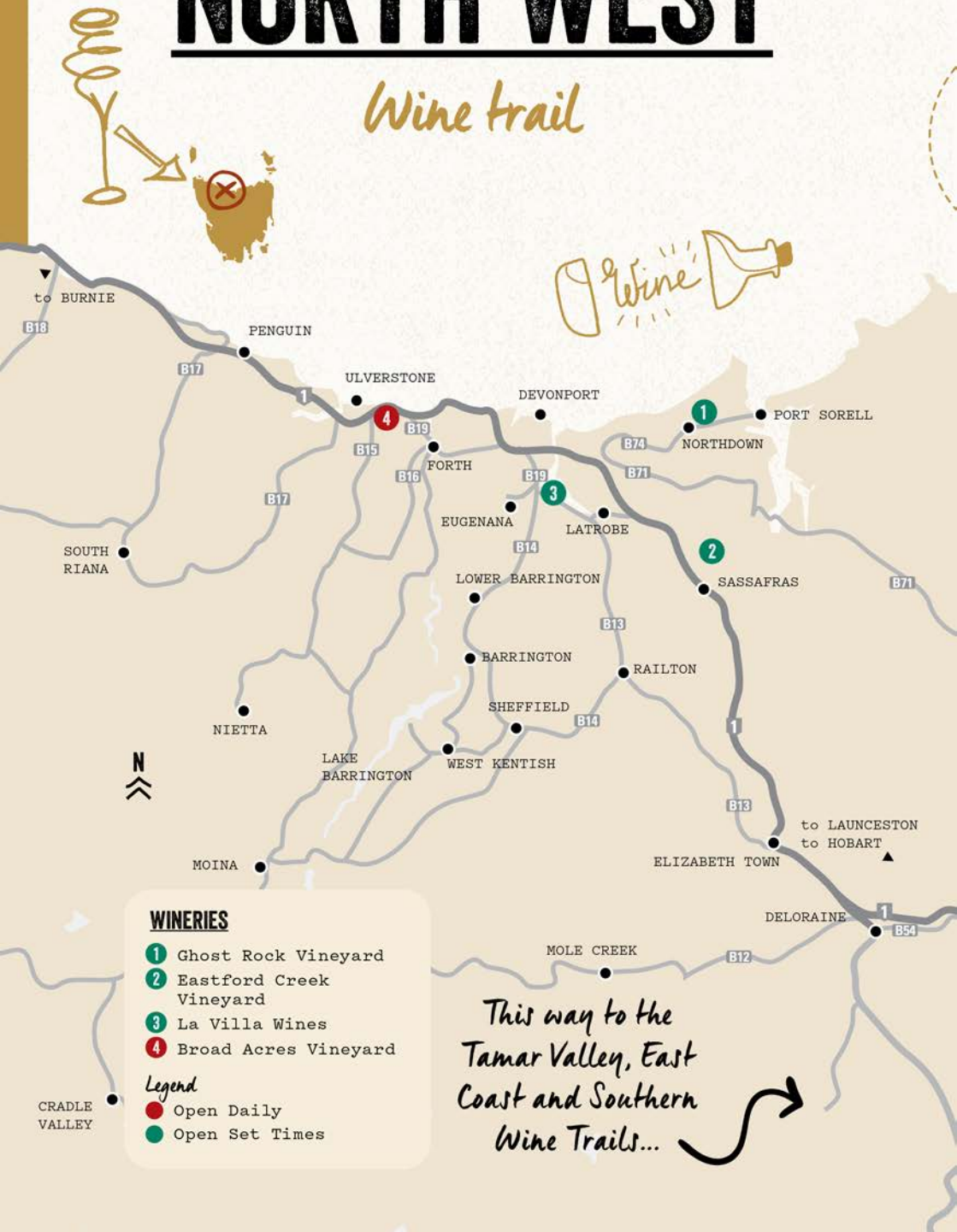
Generosity and token dairy cows come standard. That's the simple, pure, time-honoured recipe that awaits your visit.

For more local touring information head to northwesttasmania.com.au.



NORTH WEST

Wine trail



WINERIES

- 1 Ghost Rock Vineyard
- 2 Eastford Creek Vineyard
- 3 La Villa Wines
- 4 Broad Acres Vineyard

Legend

- Open Daily
- Open Set Times

This way to the
Tamar Valley, East
Coast and Southern
Wine Trails...

Our wine producers would love to give you the best possible experience, so let them know when you're coming! Be sure to contact cellar doors before you visit, as they may have limited capacity and require tastings, tours and experiences to be pre-booked.

Take Me Home

X/2

Wine producers with this icon displayed are participants in the Tasmanian Mixed Dozen freight scheme. This allows you to purchase a bottle or two from different vineyards as you travel around and have wine dispatched to your home address once you've reached a dozen bottles. Present your purchased wines (in dozen lots) at the last participating vineyard on your travels from which you purchase wine — they'll let you know the cost of freight and it will be sent straight to you.



- Walk to spectacular Dove Lake and take in the stunning wilderness views in the Cradle Mountain National Park.
- Sample some of the region's best farm produce, baked goods and other hand-made crafts at the Burnie Farmers Market.
- Follow the Cradle Coast Tasting Trail – a flavoursome journey through rolling green fields from Table Cape to seaside berry farms, highland truffles and tree-to-bottle cideries. Don't miss the Ashgrove Dairy Door for some of the region's most well-known cheese.
- Marvel at the 1,900 trees of the Tasmanian Arboretum at Eugenana, home to around 80 local bird species. Platypus can be seen most days in Founder's Lake.
- Stroll the shore in easy going seaside villages of Ulverstone, Penguin and Wynyard. Visit the popular Penguin market.



1 GHOST ROCK

📍 1055 Port Sorell Road,
Northdown
(03) 6428 4005
mail@ghostrock.com.au



Open: 10am–5pm daily (sunny months),
11am–4pm Wednesday to Sunday (less
sunny months).

Closed: Christmas Day, Boxing Day,
Good Friday and some public holidays.

Situated on the remarkable Cradle Coast,
just 10 minutes from the Spirit of Tasmania
terminal. The Cellar Door and Eatery
captures stunning views of the vineyards,
ocean, and rolling countryside. In-depth
tastings and restaurant lunch available.

WWW.GHOSTROCK.COM.AU

X12

2 EASTFORD CREEK VINEYARD

📍 269 Chapel Road,
Sassafras
0455 500 344
visit@eastfordcreek.com.au



Open: 10.30am–4.30pm
Thursday to Sunday.

Closed: Christmas Day and Good Friday.

Situated just off the Bass Highway among
the beautiful landscape of Tasmania's
fertile North-West Coast, our family-run
vineyard is committed to creating premium
quality wine with passion, care and
thought squeezed into every drop.

WWW.EASTFORDCREEK.COM.AU

X12

MEET OUR WINE PEOPLE

#taswine

JUSTIN ARNOLD & ALICIA PEARDON

GHOST ROCK +
SUPERNATURAL WINES

Alicia quit her job with Jamie Oliver (who
does that, right?) to join Justin in driving
this regional pioneer into a new era of
winemaking and hospitality excellence.
Together they are setting the standard in
natural winemaking and local sourcing for
their outstanding eatery.





GHOST ROCK TASMANIA

Established in 1999, Ghost Rock has grown to become one of the island's most exciting food and wine destinations. The passion for both can be seen first-hand in our highly awarded Cellar Door & Eatery. Be consumed by local produce and local passion at the Cradle Coast region's pioneer winery.



Open daily, 11am - 5pm

Check website for winter trade hours.

1055 Port Sorell Rd NORTHDOWN

P 03 6428 4005 ghostrock.com.au

[f ghostrockwines](#) [ghost_rock_tasmania](#)

3 LA VILLA WINES

📍 347 Mersey Main Road,
Spreyton
0418 642 722
lavillawines@iinet.net.au



Open: 11am-4pm Wednesday to Sunday.
Closed: May-September, Christmas Day,
Boxing Day and Good Friday.

We welcome you through the gates of La Villa to experience the ambience and taste our handcrafted, cool climate wines. Our seven hectare family owned vineyard is situated at Spreyton between Devonport and Latrobe – only a short distance from the Spirit of Tasmania terminal.

Group bookings by appointment only.

WWW.LAVILLAWINES.COM.AU

4 BROAD ACRES VINEYARD

📍 100 Westella Drive,
Ulverstone
(03) 6425 4166
hello@broadacres.com.au



Open: 8.30am-3.30pm daily.
Closed: Easter, Christmas
(December 24-28) and public holidays.

Our coastal vineyard, established in 2016 by the Broadby family, complements the landscape surrounding our Tasmanian Pickled Onion facility. Relax and enjoy fresh meals, tastings and cellar door sales at our cafe Windows On Westella.

WWW.BROADACRES.COM.AU





Choose your own adventure

Ever wondered what it's like to be a winemaker? Take a tour or experience a guided tasting - search the wine trails by experiences, on-site facilities and wine styles.



LEVEN VALLEY VINEYARD

📍 321 Raymond Road,
Gunns Plains
(03) 6429 1140
info@levenvalleyvineyard.com.au

Open: 10am-5pm Wednesday to Saturday from October to February. 11am-5pm Friday and Saturday from February to June.
Other times by appointment.
Closed: Public holidays.

WWW.LEVENVALLEYVINEYARD.COM.AU

ASHGROVE DAIRY DOOR



TASTE CHEESE AT THE SOURCE.

Tassie's most indulgent on-farm Cheese Experience open 7 days.

6173 Bass Highway, Elizabeth Town TAS 7304
T (03) 6368 1105
E dairydoor@ashgrovecheese.com.au
ashgrovecheese.com.au

ASHGROVE
GRASS • COW • YOU

TASMANIAN WHISKY & SPIRITS ASSOCIATION



DISCOVER TASMANIAN WHISKY & SPIRITS

It's the people that make Tasmania's whisky and spirits special. Discover these characters and their stories, with the love and the passion that goes into crafting every bottle.

T: 0405 365 717
E: admin@twasa.net.au

taswhiskyandspiritstrail.com.au

THE TASMANIAN
**WHISKY
SPIRITS**
TRAIL

TAMAR VALLEY

Wine Trail

NORTHERN TASMANIA IS A FEAST OF HISTORIC STREETSCAPES AND HERITAGE ESTATES, RICH FARMLAND, PREMIER COOL CLIMATE WINES, FRESH PRODUCE AND A HAVEN FOR DESIGNERS AND ARTISANS EAGER TO SHARE THEIR WORK.

Launceston (the largest city in the region) is a vibrant hub for food, wine and culture. There's also a touch of the wilderness, with rugged and wild Cataract Gorge not far from the city centre.

The city is located on the banks of *kanamaluka*/ the Tamar River and is the gateway to the Tamar Valley and Pipers River, two of Tasmania's prettiest wine growing areas. Both banks of *kanamaluka*/ the Tamar River and the wider valley are packed with things to see and do. Here you will find vineyards, lavender plantations, strawberry farms and orchards snuggled side-by-side.

The Tamar Valley is Tasmania's oldest wine growing area and a place where premium cool climate wines, outstanding fresh produce and award-winning restaurants go hand in hand. In fact, it's a holiday destination in its own right.

Cellar door tastings are a specialty of the area – there are some magnificent vineyards around the valley offering superb views and gourmet experiences. Many of the makers will personally greet you and happily spend time talking about their craft.

From the Tamar Valley to Pipers River in the north, through to Launceston and Relbia in the south, there are numerous vineyards all within easy driving distance of each other.

With rich farmlands, dedicated makers, good roads and light traffic, the Tamar Valley offers some of Tasmania's most enjoyable attractions.

For more local touring information head to northerntasmania.com.au.



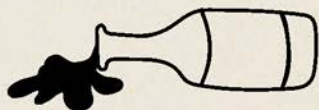
TAMAR VALLEY

Wine trail





- Cataract Gorge is a rare natural phenomenon within a two-minute drive of central Launceston. With its rolling lawns, gardens, rotunda, swimming pool, footbridge and a chairlift across the river, not to mention the peacocks and wallabies – this may be Australia's most alluring urban reserve.
- Dine in style at one of Launceston's (many) excellent restaurants.
- Experience Tasmania's rich mining history at the Beaconsfield Mine and Heritage Centre.
- Visit Evandale, one of the best preserved late Georgian/early Victorian historic townships in Australia or one of the nearby historic farming properties.
- Take to the water and cruise the hidden reaches of the Tamar River and the Tamar wetlands – a haven for local birdlife.
- Taste the region's freshest produce and wines every Saturday at Launceston's Harvest Market in Cimitiere Street.



OUR GRAPES ARE PRECIOUS

Our grapes and vines need to be very carefully nurtured in order to produce the outstanding wines you'll be enjoying as you travel around. Please do not enter any vineyards, as you may unknowingly be carrying unwanted pests or diseases that could cause great damage.



Look for this sign



Our wine producers would love to give you the best possible experience, so let them know when you're coming! Be sure to contact cellar doors before you visit, as they may have limited capacity and require tastings, tours and experiences to be pre-booked.

MEET OUR WINE PEOPLE



DR ANDREW PIRIE

APOGEE

Pioneering Tasmanian winemaker Andrew Pirie chose a distinguished site for his two-hectare sustainable vineyard named APOGEE – the culmination of his career. Here he handcrafts renowned prestige sparkling cuvées, bespoke wines expressing the exceptional terroir of the site. APOGEE is also heralded for its top tier Pinot Gris and Pinot Noir. Memories are made here...

BOB & RITA RITCHER

GREY SANDS

Bob & Rita came to Tasmania specifically to set up a high density, unirrigated, cool climate vineyard in 1987. Come and try their range of four different white and six different red table wines, which they pre-cellar for you, so they are ready to be enjoyed now or can be cellared longer. Their 'collectors' garden cellar door has extensive views over the Tamar Valley.



OCKIE MYBURGH

JOSEF CHROMY WINES

Originally from South Africa, it was a rugby scholarship that got Ockie into a winemaking qualification. Sure, he sidelined it to play pro rugby, but once wine is in the blood, it takes more than a few knocks to get it out!



1 JOSEF CHROMY WINES

📍 370 Relbia Road,
Relbia
(03) 6335 8700
wine@josefchromy.com.au



Open: 10am–5pm daily.
Closed: Christmas Day.
Restaurant closed Tuesday and Wednesday
from May to August (Cellar Door open).

Spectacular winery, Cellar Door and
hatted restaurant open 7 days. BOOKINGS
ESSENTIAL for tastings and dining. Close
to Launceston and the airport. Try one of
our signature experiences. Ultimate Winery
Experiences Australia Member.

WWW.JOSEFCHROMY.COM.AU

2 TAMAR RIDGE

📍 1a Waldhorn Drive,
Rosevears
(03) 6330 0300
info@tamarridge.com.au



Open: Cellar Door 10am–5pm daily.
Closed: Christmas Day and Good Friday.

Group bookings by appointment only.
With spectacular views of the Tamar Valley
our cellar door offers tastings of the
award-winning wines of Tamar Ridge and
Pirie Tasmania. Selected older vintages of
Pinot Noir are available. Seasonal menu
available 12pm–3pm.

WWW.TAMARRIDGE.COM.AU

X12

Restaurant & Cellar Door

OPEN 7 DAYS



Located just 10 mins South of Launceston

Wine tastings, Lunch, Tours (**Book online**)

03 6335 8700 | josefchromy.com.au



3 STONEY RISE / HOLYMAN

📍 96 Hendersons Lane,
Gravelly Beach
0499 786 634
info@stoneyrise.com



Open: 10am-5pm Thursday to Monday.
Closed: Closed Tuesdays, Wednesdays and Christmas Day. Groups by appointment only.

Stoney Rise is more than your average Cellar Door, making it the best place to spend the day enjoying good food and drinks. Taste the current range of Stoney Rise and Holyman wines, or check out the drinks list with favourites from around the globe – think Germany to the Jura, Champagne to Chablis.

WWW.STONEYRISE.COM

X12

4 MARION'S VINEYARD

📍 335 Deviot Road,
Deviot
0437 540 422 / (03) 6394 7434
info@marionsvineyard.com.au



Open: 11am-5pm daily.
Closed: Christmas Day.

Marion's Vineyard invites you to one of Australia's most visually spectacular vineyard sites overlooking the Tamar River. Planted in 1979, we produce sparkling, aromatic whites, full bodied reds including Syrah and Tempranillo. Mediterranean platters available. Come for the wines, stay for the view and, like us, you may never want to leave. Certified biodynamic and organic.

WWW.MARIONSVINEYARD.COM.AU

X12



Tastings
Small plates
Extensive Drinks List

OPEN
Thursday to Monday
10.00am - 5.00pm

Hendersons Lane, Gravelly Beach
0499 786 634 @stoneyrise_wine

25 minutes north of Launceston



5 WINTER BROOK VINEYARD

📍 150 Hjorts Road, Loira
0457 429 432
wine@
winterbrookvineyard.com.au



Open: Summer hours; 10am-5pm Thursday to Monday (September to April). Autumn hours; 11am-4pm Thursday to Monday (May). Winter hours; 11am-4pm Friday to Monday (June to August).
Closed: Christmas Day and Good Friday (check social media for changes).

Our boutique vineyard, winery and cellar door offers wine tastings and sales along with local cheese and cured meats. We produce exclusive 100% estate made, high quality, handcrafted cool climate wines of exceptional standard.

WWW.WINTERBROOKVINEYARD.COM.AU

X12

6 SWINGING GATE VINEYARD

📍 103 Glendale Road, Sidmouth
0429 980 346
swinginggatewine@gmail.com



Open: 10am-5pm daily, except Sunday, 12pm-5pm.
Closed: Christmas Day and New Years Day.

Swinging Gate is in the cool premium end of the Tamar Valley, producing stunning estate-grown wines from old vines. Enjoy guided tastings in the quirky cellar door with winemaker Doug and celebrity wine dog Nellie.

Luxurious glamping (domes) also on site.

WWW.SWINGINGGATEWINES.COM.AU

X12

MEET OUR WINE PEOPLE

#tassiewine

FRAN & SHANE

DELAMERE

Husband and wife team – Shane Holloway and Fran Austin – are the power couple of the Tasmanian wine industry. In 2022 their extensive experience, knowledge and unwavering passion and determination to produce world class wines saw them nominated as finalists in the Gourmet Traveller Wine, Australian Winemakers of the Year.



7 MOORES HILL

📍 3343 West Tamar Highway,
Sidmouth
(03) 6394 7649
enquiries@moreshill.com.au



Open: 11am-5pm daily.
Closed: Christmas Day, Boxing Day and Good Friday.

Visit Tasmania's first 100% off grid winery. Try a wine flight with a Tasmanian tasting plate from a range that showcases produce of the region. Enjoy the vineyard and valley views from the verandah.

WWW.MOORESHILL.COM.AU

X12

8 CABBAGE TREE HILL WINES

📍 104 Greens Beach Road,
Beaconsfield
0407 705 095
info@cabbagetreehillwines.com.au



Open: 11am-5pm daily.
Closed: Christmas Day, Boxing Day and New Years Day.

We are a boutique vineyard and cellar door nestled on the edge of the historical town of Beaconsfield. Experience a tasting at our purpose built cellar door which reflects the timeless appeal of the region.

WWW.CABBAGETREEHILLWINES.COM.AU

X12



MOORE'S HILL



POWERED BY THE SUN TASMANIA'S FIRST 100% OFF-GRID WINERY

A family owned vineyard
producing delicious wines
of depth, purity and personality.

Relax and enjoy views
over the vineyard, wine flights
and local produce platters.

Cellar door open 11am -5pm daily.
3343 West Tamar Hwy, Sidmouth
Just 35 min from Launceston
PH: 03 6394 7649

www.MooresHill.com.au

9 SMALL WONDER

📍 530 Auburn Road,
Kayena
(03) 6394 7541
hello@smallwonderwines.com.au

Small Wonder

Open: 11am–5pm daily.

Closed: Tuesday and Wednesday during Winter, Christmas Day and Good Friday.

Nestled within native bushland on the Western Ridge of the Tamar Valley. Join us for a tasting experience and locally sourced gourmet platter while enjoying the stunning views from our cellar door.

WWW.SMALLWONDERWINES.COM.AU

X12

10 HOLM OAK VINEYARDS

📍 11 West Bay Road,
Rowella
(03) 6394 7577
cellardoor@holm oak
vineyards.com.au



Open: Please refer to our website for opening times.

One of Tasmania's most highly regarded family wine producers. Our philosophy is to make single vineyard wines with personality and character that reflect us and the place where we live. Rustic, down-to-earth, genuine and authentic.

WWW.HOLMOAKVINEYARDS.COM.AU

X12



Small Wonder is family owned, intent on reducing our impact on the environment; respecting the land and community; and celebrating Tasmania and cool climate wines.

  @small_wonder_wines

Auburn Road, Kayena, Tamar Valley 7270 | +61 (3) 6394 7541 | smallwonderwines.com.au



11 BAY OF FIRES / ARRAS WINERY

📍 40 Baxters Road,
Pipers River
(03) 6382 7622

cellardoor@bayoffireswines.com.au



Open: 10am–5pm Thursday to Monday.
Please book online.

Closed: Some public holidays. Website shows live availability.

We offer in depth cellar door tasting experiences ranging from 30 minutes to two hours, showcasing our premium range of cool climate wines from Bay of Fires and House of Arras. Tasting experiences available Thursday to Monday, 10am–5pm.

WWW.BAYOFFIRESWINES.COM.AU

X12

12 DELAMERE VINEYARDS

📍 4238 Bridport Road,
Pipers Brook
0456 910 274
info@delamere
vineyards.com.au



Open: 10.30am–4.30pm Thursday to Monday.
Tuesday and Wednesday by appointment.

Closed: Christmas Day, Boxing Day, New Years Day and Good Friday. Bookings preferred.

Grown, vinified and bottled on our Pipers River estate. Delamere reflects our geography, passion and determination to produce world class wines. Come and experience for yourself one of Tasmania's finest Sparkling, Pinot Noir and Chardonnay producers.

WWW.DELAMEREVINEYARDS.COM.AU

X12

Enjoy premium tasting experiences from award winning wine producers



Live Availability
Scan here to book your
Cellar Door experience
Available Thurs – Mon

www.bayoffireswines.com.au | 03 6382 7622

13 SINAPIUS VINEYARD

📍 4232 Bridport Road,
Pipers Brook
0488 740 234
cellardoor@sinapius.com.au



Open: 11am-5pm Thursday, Friday and Monday. 12pm-5pm on weekends and public holidays.

Closed: Tuesdays and Wednesdays.
Christmas Day and Boxing Day.

Groups and buses by appointment only.
100% estate grown and made. From sustainably grown, close planted vines, using minimal intervention winemaking, try our single vineyard wines at our family owned and operated vineyard and winery. A true expression of terroir.

WWW.SINAPIUS.COM.AU

X12

14 DALRYMPLE VINEYARDS

📍 1337 Pipers Brook Road,
Pipers Brook
(03) 6382 7229
info@dalrymplevineyards.com.au



Open: By appointment (bookings essential).

Stand in this small vineyard and stare into the face of Bass Strait. Since 1987 the Dalrymple Vineyard has crafted some of Australia's most distinctive cool climate wines. To book please visit www.dalrymplevineyards.com.au.

WWW.DALRYMPLEVINEYARDS.COM.AU



BEST SMALL CELLAR DOOR NORTHERN TASMANIA
Gourmet Traveller Wine
Australia's Best Cellar Door Awards 2022

OPEN 10:30-4:30 THURS-MON. 4238 BRIDPORT RD
PIPER'S BROOK (ROUTE B82) PHONE 0456 910 274

With a brilliant range of local cheeses, meats and delicacies, we have all the essentials to a beautiful summer or winter picnic, and the perfect accompaniment to our wines.



MORE INFO & BOOKINGS

15 PIPERS BROOK VINEYARD

📍 1216 Pipers Brook Road,
Pipers Brook
(03) 6382 7555
nadines@pipersbrook.com



Open: 7 days, please contact us for seasonal opening hours.

Closed: Christmas Day, Boxing Day, New Years Day, Anzac Day and Good Friday.

Nadines Café located at Pipers Brook Vineyard offers a menu of fresh Tasmanian produce, bottle and glass sales and self-guided tastings of Pipers Brook Estate, Ninth Island, Pipers Tasmania and Kreglinger sparkling wines.

WWW.KREGLINGERWINEESTATES.COM

16 JANSZ TASMANIA

📍 1216B Pipers Brook Road,
Pipers Brook
(03) 6382 7066
info@jansz.com.au



Open: 11am-4pm Thursday to Sunday.

Closed: Christmas Day, New Year's Day and Good Friday (Anzac Day open 12-4pm).
Bookings recommended.

Overlooking a picturesque lake, the Jansz Wine Room offers visitors the opportunity to find out why Jansz sparkling is among the best. Enjoy a curated Jansz tasting or stay longer and enjoy a cheese platter.

WWW.JANSZ.COM.AU

Mudbar
RESTAURANT

Launceston's premier waterfront dining experience.
Tasmania's best Pinot Noir collection.

BOOK ONLINE AT MUDBAR.COM.AU
03 6334 5066

17 APOGEE

📍 1083 Golconda Road,
Lebrina
(03) 6395 6358
info@apogeetasmania.com



Open: By appointment.

Taste some of Australia's finest cool climate sparkling and table wines in our 1860s original farm cottage. The Apogee tasting experience is intimate and informative.

WWW.APOGEETASMANIA.COM

X12

18 CLOVER HILL WINES

📍 60 Clover Hill Road,
Lebrina
(03) 6395 6114
cellardoor@cloverhillwines.com.au



Open: 11am-4.30pm Wednesday to Sunday.
Please visit the website for up-to-date opening times.

Closed: Check the website for up-to-date holiday times.

Clover Hill is synonymous for producing elegant and refined sparkling wines with a reputation of uncompromising quality. Poised atop the valley, the Cellar Door's breathtaking position overlooks the vineyard and Bass Strait.

WWW.CLOVERHILLWINES.COM.AU

X12



CLOVER HILL
TASMANIA
1891

Discover the elegance of Clover Hill,
Tasmanian producer of méthode
traditionnelle sparklings celebrated for
finesse and uncompromising quality.

PIPERN RIVER
NORTH-EAST TASMANIA
www.cloverhillwines.com.au



19 THE RIDGE NORTH LILYDALE

📍 106 Browns Road,
North Lilydale
0408 192 000
info@theridge
northlilydale.com



Open: 10.30am-5pm Sunday from October to May (check our website for exceptions, such as private functions). Other days by online appointment.

Closed: All June to September, Christmas Day, Boxing Day and Easter Sunday.

ALTITUDE – LATITUDE – ATTITUDE

Our boutique, award-winning vineyard nestled in the picturesque foothills of Mt. Arthur, where “we turn mountain air into wine”. ‘Tasmanian Traditional’ Sparkling, Pinot Noir and Chardonnay. Book online for exclusive tasting & walk experiences.

WWW.THERIDGENORTHLILYDALE.COM

CHARTLEY ESTATE

📍 38 Blackwood Hills Road,
Rowella
0418 124 690
lkossmann@hotmail.com

Open: By appointment.

WWW.CHARTLEYESTATEVINEYARD.COM.AU

Don't forget to share
your Tassie Wine
adventures!



#tassiewine



Valleybrook Wine On Wheels Tours



Indulge your senses with our guided tours along the sensational Tamar Valley wine route, for a unique wine tasting experience.



We Drive you to Drink

0451 965 841 | info@valleybrook.com.au
www.valleybrook.com.au

Located in an 1830's flour mill on the banks of Kanamaluka/ River Tamar, Stillwater Restaurant and Seven Rooms is an award winning, nationally recognised restaurant with what is described as one of Australia's best small hotel just steps away.

Serving contemporary Tasmanian cuisine breakfast, lunch & dinner showcasing exceptional local produce, wine, spirits & more.

Join us for the best of what Tasmania has to offer from a delectable breakfast, casual lunch, decadent dinner, an overnight getaway or a great coffee by the river.



STILLWATER

2 BRIDGE RD, LAUNCESTON
(03) 6331 4153
INFO@STILLWATER.NET.AU
STILLWATER.COM.AU



BEACONSFIELD MINE & HERITAGE CENTRE



COME AND PLAY WITH OUR HISTORY...

The Centre is a collection of experiences that allow you to enjoy and appreciate the history of Beaconsfield and the Tamar Valley.

West Street, Beaconsfield TAS 7277

T (03) 6383 1473

E beaconsfield@wtc.tas.gov.au

beaconsfieldheritage.com.au



GERONIMO RESTAURANT



MODERN EUROPEAN FOOD,
FRESH TASMANIAN PRODUCE.
Geronimo blends the very best of fresh local Tasmanian produce with years of experience and dedication to the art of cooking.

186 Charles Street, Launceston TAS 7250

T (03) 6331 3652

E hello@geronimorestaurant.com.au

geronimorestaurant.com.au



TURNER STILLHOUSE



TURNER STILLHOUSE IS A MULTI-AWARD WINNING CRAFT SPIRITS DISTILLERY.

Located just 15 minutes from Launceston in the scenic Tamar Valley. Our flagship product is Three Cuts Gin. **Tastings/tours offered daily.**

1A Waldhorn Drive, Grindelwald TAS 7277

T (03) 6776 1414

E info@turnerstillhouse.com

turnerstillhouse.com



GREY SANDS VINEYARD

📍 6 Kerrisons Road,
Glengarry
0407 961 167
info@greysands.com.au

Open: Open by appointment only.

WWW.GREYSANDS.COM.AU

VELO WINES

📍 755 West Tamar Highway,
Legana
(03) 6330 1582
leganaestate@gmail.com

Open: Cellar Door is open daily.

Closed: Some Public Holidays – please see our social media pages or website for opening hours.

WWW.VELOWINES.COM.AU

X12

WATERTON HALL

📍 61 Waterton Hall Road,
Rowella
0417 834 781
info@watertonhall.com.au

Open: Open by appointment only. History and tasting tours, romantic in-vine lunches and tasting groups from November to April. Phone to book in.

Closed: May to October inclusive.

WWW.WATERTONHALL.COM.AU

EAST COAST

Wine Trail

IT'S PICTURE PERFECT - WHITE SAND BEACHES AND OPEN ENDLESS BLUE HORIZONS. PLACES THAT MAKE YOU FEEL LIKE YOU'RE THE FIRST PERSON TO LEAVE A FOOTPRINT. NATIONAL PARKS FILLED WITH WONDERS, AND SEASIDE TOWNS FILLED WITH WELCOME. A GOURMET FOOD BOWL BURSTING WITH THE BEST LOCAL FARE.

Here, you can experience one of Australia's greatest road trips – a journey that will lead you to places and moments you'll never forget. Tasmania's East Coast is a place of stories, encounters and treasures. A place where small, unexpected moments become lifelong memories and where taking a break can not only refresh but reinvent.

When you embark on the Great Eastern Drive, you'll need to come with an appetite. This journey will lead you to many of Tasmania's most delicious experiences in some of its most beautiful locations.

The East Coast's mild climate creates perfect growing conditions for the state's premium fresh produce, from sweet berries and nuts to award-winning cheeses and the freshest seafood imaginable. Did we mention wine?

The region has long attracted passionate growers, producers, winemakers, cheesemakers and chefs – indulge yourself with their creations. Take a weekend, a few days or longer to explore, feast and wander. Break your journey at a B&B with an ocean view, a luxury lodge or coastal retreat and – when you need time to digest all that delicious produce – grab a taste of some of the region's most memorable experiences. Kayak along the coast, take a cruise to the east coast's famed beaches, or work up a fresh appetite on some of Australia's best walks.

Take to the road on the Great Eastern Drive and experience a true food and wine lover's adventure – on island time.

For more local touring information head to eastcoasttasmania.com.



EAST COAST

Wine trail



Our wine producers would love to give you the best possible experience, so let them know when you're coming! Be sure to contact cellar doors before you visit, as they may have limited capacity and require tastings, tours and experiences to be pre-booked.

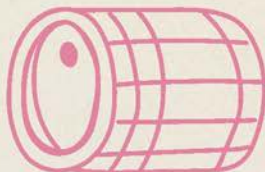
Take Me Home

x12

Wine producers with this icon displayed are participants in the Tasmanian Mixed Dozen freight scheme. This allows you to purchase a bottle or two from different vineyards as you travel around and have wine dispatched to your home address once you've reached a dozen bottles. Present your purchased wines (in dozen lots) at the last participating vineyard on your travels from which you purchase wine — they'll let you know the cost of freight and it will be sent straight to you.



- From Orford, take a cruise to Maria Island to observe wombats and wallabies as they graze the Darlington settlement. Don't miss the Painted Cliffs and Fossil Cliffs.
- Visit the beautiful seaside towns of Swansea, Bicheno, Scamander and St Helens — all rich in history with their beaches, cafes, churches and cottages.
- Meet some of the local wildlife at the nightly penguin parade in Bicheno.
- Enjoy the many walks and spectacular views on offer from the Cape Tourville lighthouse, on the edge of the Freycinet National Park, to the spectacular white sands of Wineglass Bay, Binalong Bay and the Bay of Fires.
- Venture into the Freycinet National Park by boat, sea kayak or on foot to make the unique journey to Wineglass Bay, one of the world's finest beaches.



1 PRIORY RIDGE

📍 280 Ansons Bay Road,
St. Helens
0408 479 699
prioryridge@gmail.com



Open: 11am–4pm Wednesday to Sunday from September to May. For other times refer to our website or Google. Bookings preferred, especially for groups.

Closed: Christmas Day, Boxing Day, Good Friday and Easter Sunday.

Our boutique vineyard is only minutes from iconic Bay of Fires/St. Helens, offering tastings and sales of premium cool climate wines from a rustic cellar door which features early settler memorabilia. Ample parking and picnic facilities.

WWW.PRIORYRIDGEWINES.COM

X12

3 FREYCINET VINEYARD

📍 15919 Tasman Highway,
Between Bicheno and
Swansea (7km south of the
Coles Bay turn off)
(03) 6257 8574
info@freycinetvineyard.com.au



Open: 10am–5pm daily.

Closed: Christmas Day.

Advance bookings required for groups. Original viticultural pioneers of our region, the 16 hectare family owned vineyard is recognised for its 5-star award winning wines. 100% grown, produced and bottled on the Estate with uncompromising dedication and passion since 1979. Relax and enjoy great wines, Tasmanian cheeses, home grown extra virgin olive oil and great coffee!

WWW.FREYCINETVINEYARD.COM.AU

X12

31

2 IRON HOUSE VINEYARDS

📍 21554 Tasman Highway,
Four Mile Creek
(03) 6372 2228
tasting@ironhouse.com.au



Open: 10am–4pm, Wednesday to Sunday (June to September).

10 am–5pm, Wednesday to Sunday (October to May).

Ironhouse Tasmania is a Brewery, Vineyard and Distillery family-owned business situated on Tasmania's East Coast. We are perfectly situated for visitors to explore the unique qualities and attractions of the area. Ironhouse truly is paradise.

WWW.IRONHOUSE.COM.AU

X12



4 DEVIL'S CORNER

📍 Sherbourne Road,
Apslawn
(8km south of the Coles Bay
turn off)
(03) 6257 8881
info@devilscorner.com.au

Devil's Corner
TASMANIA

Open: 10am-5pm daily.
Closed: Christmas Day and Good Friday.

A guaranteed haven along the East Coast of Tasmania, Devil's Corner is home to some of the region's best wine and food experiences, 360-degree views, and all four seasons in one day.

WWW.DEVILSCORNER.COM.AU

X12

5 GALA ESTATE

📍 14891 Tasman Highway,
Cranbrook
0401 326 197
hello@galaestate.com.au

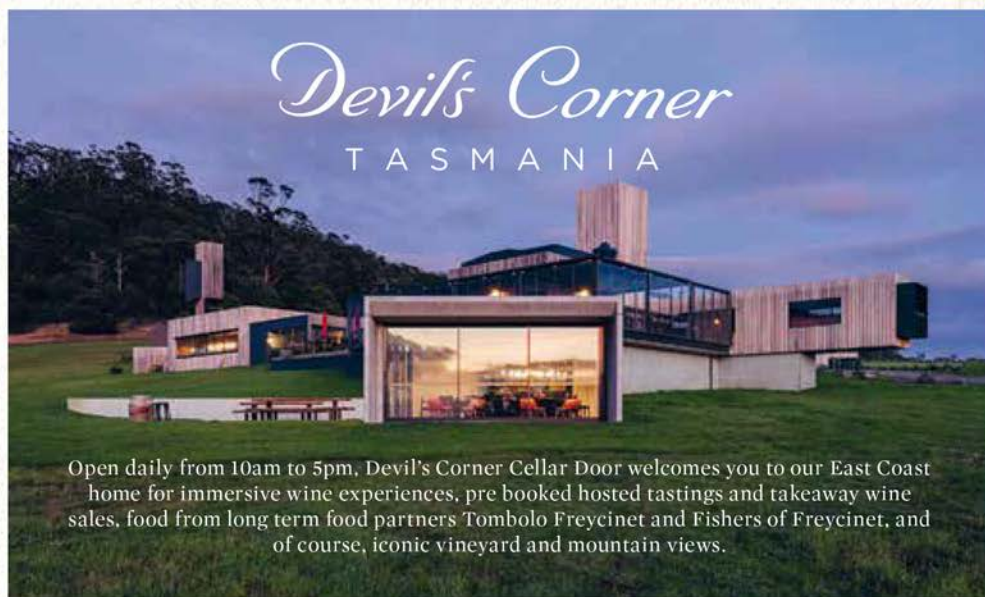
Gala
ESTATE

Open: 10am-4pm daily, September to May,
10am-4pm Saturday to Monday in June,
July, August. Bookings essential for wine
tastings, book now to avoid disappointment.

As the second oldest family business in Tasmania, we have been living and loving this land for 200 years. Our pristine natural environment allows us to consistently produce some of Tasmania's best wines. Visit our Halliday 5 Star Winery and choose which wine flight best suits your taste? Gala Estate, inspiring Tasmania!



WWW.GALAESTATE.COM.AU

X12



Devil's Corner
TASMANIA

Open daily from 10am to 5pm, Devil's Corner Cellar Door welcomes you to our East Coast home for immersive wine experiences, pre booked hosted tastings and takeaway wine sales, food from long term food partners Tombolo Freycinet and Fishers of Freycinet, and of course, iconic vineyard and mountain views.

 @DevilsCornerCellarDoor
 devilscornerwine

Cellar Door - Corner Sherbourne
Road & Tasman Highway, Apslawn - PH 0448 521 412
devilscorner.com.au

6 CRAIGIE KNOWE

📍 80 Glen Gala Road,
Cranbrook
0499 901 109
enquiries@
craigieknowe.com.au



Open: 11am-4pm Friday to Monday. Peak season open 7 days per week, refer to website to confirm opening hours.
Closed: Christmas and Boxing Day.

Family owned. Tastings, tours, platters, cheese boards and chocolate matched with wine, all in a beautiful relaxing location. Try fabulous pastries created onsite by Freycinet Coast Patisserie, matched to our wines or high tea with wine!

WWW.CRAIGIEKNOWE.COM.AU

X12

7 SPRING VALE VINEYARDS

📍 130 Spring Vale Road,
Cranbrook
(03) 6257 8208
sales@springvalewines.com



Open: 11am-4pm daily.
Closed: Christmas and Boxing Day.

A family owned vineyard, situated just north of Swansea, producing Pinot Noir, Gewurztraminer, Pinot Gris, Chardonnay, Sauvignon Blanc and Sparkling. It features an original convict-built stable (c. 1842) converted for cellar door tastings.

WWW.SPRINGVALEWINES.COM

X12



THE FARM SHED
EAST COAST WINE CENTRE

- TASTINGS + SALES
- WINE + WHISKY + GIN
- WINE BAR
- ART + DESIGN
- WINE CLUB

53A Burgess Street Bicheno Tasmania
03 6375 1868
thefarmshedtas.com.au



Exceptional Award Winning Tasmanian Gins

• Cellar Door • Tastings • Sales

Come say hi at Spring Vale Winery!

8 MILTON VINEYARD

📍 14635 Tasman Highway,
Swansea
(13km North of Swansea)
(03) 6257 8298
wine@miltonvineyard.com.au



Open: Cellar Door 10am-5pm daily in summer and 10.30am-4pm daily in winter.
Closed: Christmas and Boxing Day.

The Dunbabins produce premium quality award winning cool climate wines all grown on site. Enjoy a tasting overlooking the lake and vineyard. A seasonal menu is available September to May from our summer restaurant.

WWW.MILTONVINEYARD.COM.AU

X12



Craigie Knowe

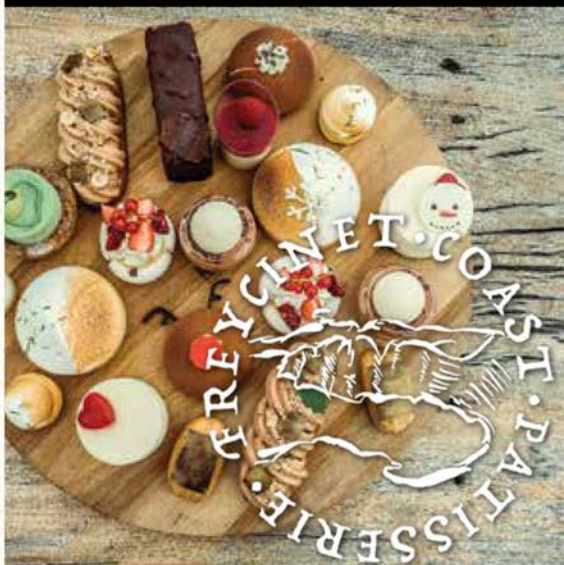
- VINEYARD -



Enjoy a tasting at the
oldest vineyard on the East Coast –
cellar door set amongst the vineyard.

TREY CINET • COAST • PATISSERIE

PLATTERS, CHEESEBOARDS,
CHOCOLATE & WINE MATCHING,
A SELECTION OF SWEET TREATS
& HIGH TEA EVERY SUNDAY
(bookings essential)



80 Glen Gala Road, Cranbrook 7190
Ph 0499 901 109

WWW.CRAIGIEKNOWE.COM.AU

9 MAYFIELD ESTATE

📍 Mayfield Jetty Road,
Little Swanport
0400 501 673
cellardoor@
mayfieldestatetas.com.au



Open: 11am-5pm, Friday to Monday with extended opening times during the summer months. Check website and Facebook for current opening hours.
Closed: Christmas Day and Boxing Day.

Our 2022 built cellar door has stunning views across Great Oyster Bay. Enjoy a glass of wine with a platter by the fire in winter or on our extensive sunny deck in the summer.

WWW.MAYFIELDESTATETAS.COM.AU

X12

11 DARLINGTON VINEYARD

📍 63 Holkham Court,
Orford
0418 565 398
darlington
vineyard@gmail.com



Open: 11am-4pm, Thursday to Sunday, Monday to Wednesday by appointment.
Closed: Christmas Day and Boxing Day.

Located on the East Coast Wine Trail at beautiful Orford overlooking the historic settlement of Darlington on Maria Island. The hand tended vines produce award winning, cool climate Pinot Noir, Chardonnay, Riesling and Sauvignon Blanc.

WWW.DARLINGTONVINEYARD.COM.AU

X12

35

10 BOOMER CREEK VINEYARD

📍 10922 Tasman Highway, BOOMER CREEK
EAST COAST TASMANIA
Little Swanport
0423 912 360
hello@boomercreekvineyard.com.au

Open: 11am-5pm daily in peak season, 11am-4pm Wednesday to Sunday during off season (check website or Google for up-to-date hours).

Closed: 24 July to 31 August, Christmas Eve, Christmas Day and Boxing Day.

Enjoy sampling our award-winning wines and local platter delicacies in our architecturally designed and family built cellar door, whilst taking in the calming country landscape and beautiful coastal views of Schouten Island and Freycinet Peninsula.

WWW.BOOMERCREEKVINEYARD.COM.AU

X12

KELVEDON ESTATE

📍 12371 Tasman Highway,
Swansea (10km south of Swansea)
0428 387 747
info@kelvedonestate.com.au

Open: By appointment only.

WWW.KELVEDONESTATE.COM.AU

X12





Choose your own adventure

Are you a pinotophile or on a mission to find Tassie's best bubbles? Search the island's wine producers by varietal or wine style.



FREYCINET MARINE FARM



MOUTHWATERING FRESH SEAFOOD

Harvested daily, our own beautiful pacific oysters and Tasmanian blue mussels as well as scallops, rock lobster, other local seafood and local wines. You can enjoy on the deck or take away to enjoy later.

1784 Coles Bay Road, Coles Bay
(03) 6257 0140
oysters@freycinetmarinefarm.com
freycinetmarinefarm.com



THE LONG LUNCH WINE TOUR CO



JOIN US ON A FULLY HOSTED WINE TOUR.

Visiting 4 wineries. Door-to-door service, lunch & tastings inclusive. Picking up from Bicheno, Coles Bay & Swansea - "hop on hop off" shuttle service \$65pp, group tours from \$130-\$180 and private tours \$275pp. Don't miss out on a superb day out, book now!

T 0409 225 841
E info@longlunchtourco.com.au
longlunchtourco.com.au



SPRING BAY DISTILLERY - SPRING BEACH



AWARD-WINNING NEW WORLD DISTILLERY.

Established in 2015, Spring Bay Distillery is a multiple award-winning new world distillery. We offer some of Tasmania's finest single malt whisky, gin and vodka. Tours and tastings by appointment.

6 Hoods Rd, Spring Beach
T 0400 331 408
E orders@springbaydistillery.com.au
springbaydistillery.com.au



SOUTHERN

Wine Trail

HOBART'S WORLD CLASS FOOD AND WINE, HISTORY AND HERITAGE BLEND TOGETHER TO MAKE AUSTRALIA'S SOUTHERNMOST CAPITAL CITY AND SURROUNDING REGIONS A MUST-SEE DESTINATION.

It's the gateway to southern *lutruwita* / Tasmania and it doesn't really matter whether you love trekking into the wilds, sipping on a crisp Riesling or venturing deep into an underground museum.

There's a little something for everyone in a place so compact that a few days will feel like a week. With short travel times between adventures, you can be atop *kunanyi* / Mount Wellington and swimming at a beach on the same day, cruising up the River Derwent and meeting a local artist in Salamanca on the very same afternoon.

The beauty of this capital city is that everything is close to Hobart. Those eager to explore beyond the city centre in any direction will stumble across vineyards, beaches, forests, historic towns, markets, museums and mountains right next door to the city itself.

And there's good reason well-known foodies have settled in southern Tasmania. The soil is rich, the water and air pure, and innovative locals serve up

paddock to plate goodness. Growers and makers deliver everything from soft goat's cheese, smoked salmon and roadside apples to world class sparkling wine. Pick your own fresh produce direct from the source or pull up a seat at a stylish eatery.

Tasmania may look little on the map, but it's brimming with things to do. Whether you're into art and culture, outdoor adventure or have a penchant for exploring the past, Southern Tasmania has plenty to fill your day. Pull on some boots and venture into the wilderness, meet a maker, drive through vineyard landscapes or get up close to a Tassie devil. Perhaps you like the idea of cruising southern waterways or browsing colourful market stalls. There are things to experience here that you can't do anywhere else on the planet. Time to get out a pen and paper – it could be a quite a list.

For more local touring information head to hobartandbeyond.com.au.



SOUTHERN



Wine trail

This way to
Tamar Valley &
North West Wine Trails.

This way to
East Coast
Wine Trail



LEGEND

- Open Daily
- Open Set Times
- Open by Appointment

WINERIES

- 1 Mewstone Wines
- 2 Kate Hill Wines
- 3 Home Hill Winery
- 4 Glaetzer-Dixon Family Winemakers
- 5 Moorilla Winery
- 6 Derwent Estate
- 7 Pressing Matters
- 8 Domaine A
- 9 Nocton Vineyard
- 10 Pooley Wines
- 11 Puddleduck Vineyard
- 12 Frogmore Creek
- 13 Riversdale Estate
- 14 Coal Valley Vineyard
- 15 Cape Bernier Vineyard
- 16 Bangor Vineyard Shed

South

Yep, next stop, Antarctica.

OUR GRAPES ARE PRECIOUS

Our grapes and vines need to be very carefully nurtured in order to produce the outstanding wines you'll be enjoying as you travel around. Please do not enter any vineyards, as you may unknowingly be carrying unwanted pests or diseases that could cause great damage.

Look for this sign



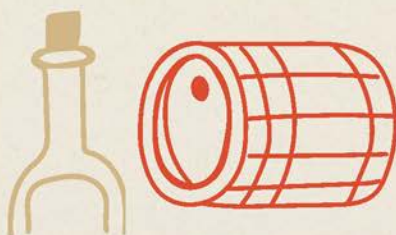
PLEASE!
**KEEP OUT
OF THE VINES**



Our wine producers would love to give you the best possible experience, so let them know when you're coming! Be sure to contact cellar doors before you visit, as they may have limited capacity and require tastings, tours and experiences to be pre-booked.



- MONA is the Museum of Old and New Art, displayed in a secular temple at Moorilla Estate: 6,000 square metres of artwork that will batter your beliefs.
- Each Saturday Salamanca Place hosts Australia's best outdoor market – bargains and buskers, art and craft, food and wine, trash and treasure.
- Follow up on Sunday with the freshest Tassie produce at the Farm Gate Market – ranked among the world's best.
- Visit the pinnacle of spectacular *kunanyi* / Mt Wellington and see the entire city and its harbour below.
- Immerse yourself in the power of Port Arthur and *turrakana* / Tasman Peninsula, its convict buildings, gardens, tours and tales – an essential Tasmanian experience.
- Get back to nature – walk the Three Capes Track, take a ferry to Bruny Island or wander the pristine beaches of Tasmania's South.



1 MEWSTONE WINES

📍 11 Flowerpot Jetty Road, mewstone
Flowerpot
0435 866 771
cellardoor@mewstonewines.com.au

Open: 11am–4pm Friday to Monday and
11am–4pm Friday to Sunday in Winter.
Closed: Most Public Holidays.

Come and visit the most scenic cellar door in Tasmania. Established by brothers Jonathan and Matthew Hughes. The winery and cellar door are set amongst the Mewstone vineyard, overlooking the stunning D'Entrecasteaux Channel.

WWW.MEWSTONEWINES.COM.AU

2 KATE HILL WINES

📍 21 Dowlings Road,
Huonville (on the Huon Highway)
0448 842 696
info@katehillwines.com.au



Open: 11am–4pm Wednesday to
Sunday. Other times by appointment.
Please check website and social media for
winter hours.

Nestled amongst the vines with spectacular views of the surrounding countryside, this intimate cellar door is the ideal spot to enjoy a glass of wine with friends. Noted for their balance, elegance and approachability, Kate's wines include Sparkling, Riesling, Chardonnay, Pinot Noir and Shiraz.

WWW.KATEHILLWINES.COM.AU

X12

3 HOME HILL WINERY

📍 38 Nairn Road,
Ranelagh
(03) 6264 1200
info@homehillwines.com.au



Open: Cellar Door open 10am–5pm daily.
Restaurant open Thursday to Monday.
Cellar Door 11am–3pm daily in Winter.
Closed: Christmas Day & Boxing Day.
Restaurant closed in August.
Please check website for any changes.

Tasmania's most awarded boutique winery 30 minutes from Hobart. Cellar door tastings and fresh Tasmanian produce served in our stunning venue. A perfect space to relax and unwind. Browse our gift shop also.

WWW.HOMEHILLWINES.COM.AU

4 GLAETZER-DIXON

📍 93 Brooker Avenue,
Hobart
0417 852 287
nick@gdfwinemakers.com



Open: 7 days by appointment. Last minute bookings welcome. Book online or phone/text ahead 0417 852 287.

Right in Hobart, Nick Glaetzer has established his multi award-winning Glaetzer-Dixon winery and tasting room in an old ice factory on the edge of the CBD.

- Winner of the 50th Jimmy Watson Memorial Trophy
- Gourmet Traveller Wine Young Winemaker of the Year
- 2 x Best Tasting Experience in Southern Tasmania by Gourmet Traveller Wine

WWW.GDFWINEMAKERS.COM

X12

5 MOORILLA

📍 655 Main Road,
Berriedale
(03) 6277 9900
cellardoor@mona.net.au



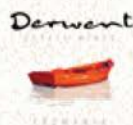
Open: 12pm-5pm Friday to Monday.
Closed: Christmas Day.

Moorilla is a winery with a museum attached. Moorilla's owner, David Walsh, is also the creator of Mona. Moorilla creates small-batch, cool-climate wines with new-world fruit and old-world complexity, showcasing the terroir of its two vineyards.

WWW.MOORILLA.COM.AU

6 DERWENT ESTATE

📍 329 Lyell Highway,
Granton
(03) 6263 5802
cellarclub@
derwentestate.com.au



Open: Cellar Door open 10am-5pm daily.
"The Shed" Restaurant Open 11am-5pm
from Thursday to Monday.
Closed: Christmas Day, Boxing Day and
Good Friday.

Winemaker John Schuts and viticulturist Andrew Hanigan are producing world class cool climate wines in our purpose-built onsite straw-bale winery set on the picturesque banks of the Derwent River just 20 minutes north of Hobart.

WWW.DERWENTESTATE.COM.AU

X12



Two seafood restaurants.
One iconic location.

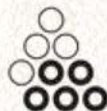
UPPER DECK
Mures

PEARL • CO.

mures.com.au
Victoria Dock, Hobart, TAS, 7000

7 PRESSING MATTERS

📍 711 Middle Tea Tree Road,
Tea Tree
0474 380 109
mail@
pressingmatters.com.au



Open: 10am-5pm Thursday to Sunday.
Bookings encouraged.
Closed: Christmas Day, Boxing Day and
Easter Sunday.

Our wines are capsules of the unique terroir and history of Pressing Matters, telling the story of time and place. Award-winning cool climate Pinot Noirs and Riesling, and recently, Chardonnay and Cabernet into the mix.

WWW.PRESSINGMATTERS.COM.AU

X12

8 DOMAINE A

📍 105 Tea Tree Road,
Campania
0484 001 944
cellardoor@
domaine-a.com.au



Open: 11am-5pm Thursday to Sunday.
Bookings strongly recommended.
Closed: Christmas Day.

Established in 1973, Stoney Vineyard is the oldest in Tasmania's Coal River Valley. From this storied site, Domaine A has built an international reputation for its world class stable of mature, Bordeaux-style cool-climate wines.

WWW.DOMAINE-A.COM.AU

9 NOCTON VINEYARD

📍 373 Colebrook Road,
Richmond
(03) 6260 2688
office@noctonwine.com.au



NOCTON
TASMANIA

Open: 10am-4pm daily.
Closed: Christmas Day, Boxing Day and Good Friday.

We invite you to our vineyard to taste our unique wines. Book a cheese platter and take a seat on our deck overlooking the vines. Meet our friendly staff. Nocton has produced many award-winning wines – Pinot Noir, NV Sparkling and Chenin Blanc. A wine for everyone to enjoy.

WWW.NOCTONWINE.COM.AU

X/2

**TAS
WINE
FEST**
IT'S WINE TIME



TASWINEFEST.COM.AU



FRODORE
CALLEY



PLenty





GASWORKS CELLAR DOOR

ESTABLISHED IN 2011




Choose from Tasmania's best online wine selection -
Over **500 wines** from more than **100 Tasmanian producers**



BUY TASMANIAN WINE ONLINE

Call 03 6225 9944 or email us at cellardoor@vantagegroup.com.au



 gasworkscellardoor.com.au

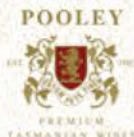
10% discount plus free
delivery Australia wide*

*When you purchase 6 or more bottles
and enter the code **23WINE23**

Licence: 7111020X Gasworks - Hobart
2 Macquarie Street Hobart TAS 7000

10 POOLEY WINES

📍 1431 Richmond Road,
Richmond
(03) 6260 2895
cellardoor@
pooleywines.com.au



Open: 11am-4pm daily from June to October.
10am-5pm daily from November to May.
Closed: Christmas Day, Boxing Day and Good Friday.

Join us at our historic cellar door for in-depth structured tastings, local cheeses and charcuterie boards daily, as well as artisan wood-fired pizzas on weekends. Pooley Wines also offers luxury accommodation and fine dining across the road at the lovingly restored Prospect House Private Hotel. Halliday '23 Winery of the Year.

WWW.POOLEYWINES.COM.AU

X12

11 PUDDLEDUCK

📍 992 Richmond Road,
Richmond
(03) 6260 2301
bookings@
puddleduck.com.au



Open: 10am-5pm daily.
Closed: Christmas (25th to 27th December '22) and Easter (7th to 9th April '23).

Welcome to Puddleduck! Relax in our fun, friendly, family owned and operated cellar door. Enjoy a taste, or a light lunch by the lake. Browse in our 'Everything Ducky Duck Shop' or take a winery tour 10.30am and 2.30pm weekdays (by appointment). See you soon!

WWW.PUDDLEDUCK.COM.AU

X12

Puddleduck Vineyard
Open 7 days 10am - 5pm
992 Richmond Road
Richmond Tasmania
puddleduck.com.au

Vineyard and Winery tours
10.30am and 2:30pm weekdays,
bookings essential on 03 6260 2301
Pecking menu or 'reverse BYO'
facebook.com/puddleduck.vineyard

puddleduck vineyard tasmania

12 FROGMORE CREEK

📍 699 Richmond Road,
Cambridge
(03) 6274 5844
admin@
frogmorecreek.com.au



Open: 10am–5pm Wednesday to Monday.
Closed: Christmas Day.

The home of Frogmore Creek and Forty-Two Degrees South wines offers stunning architecture overlooking the Coal River Valley with an extensive list of premium wines on tasting. Lunch bookings are recommended.

WWW.FROGMORECREEK.COM.AU

13 RIVERSDALE ESTATE

📍 222 Denholms Road,
Cambridge
(03) 6248 5555
info@riversdaleestate.com.au

Open: 10am–5pm Friday to Sunday.
Closed: Christmas Day, Boxing Day, Easter Sunday, Anzac Day and public holidays.

Largest Tasmanian family owned and operated vineyard in Southern Tasmania, spectacular water views, award winning wines. Award winning restaurant, High Tea Orangery and Peter Rabbit Gift Shop.

WWW.RIVERSDALEESTATE.COM.AU

X12

14 COAL VALLEY VINEYARD

📍 257 Richmond Road,
Cambridge
(03) 6248 5367
admin@coalvalley.com.au



Open: 10am–5pm Thursday
to Monday from November to May and
11am–4pm Thursday to Monday
from June to October.
Closed: Christmas Day and Boxing Day.

A stunningly located five hectare winery in the Coal River Valley. Guided tasting of Sparkling (Blanc de Noir), Riesling, Chardonnay, Rose, Pinot Noir, Tempranillo and Merlot Cabernet Sauvignon. A must to visit.

WWW.COALVALLEY.COM.AU

X12

45

15 CAPE BERNIER VINEYARD

📍 230 Bream Creek Road, **CAPE BERNIER**
Bream Creek
(03) 6253 5443
info@capebernier.com.au



Open: 11–4pm Friday to Sunday from May to September, 11am–5pm Thursday to Tuesday from October to April. Other times by appointment.
Closed: Christmas Day and Good Friday.

Cape Bernier is a beautiful family-run vineyard overlooking stunning Marion Bay. If you are heading to Port Arthur, call in to taste our estate grown sparkling, red and white wines. Our Pinot Noir epitomises the characteristics found only in grapes grown in our corner of the world.

WWW.CAPEBERNIER.COM.AU

X12

16 BANGOR VINEYARD SHED

📍 20 Blackman Bay Road,
Dunalley
(03) 6253 5558
info@bangorshed.com.au



Open: 11am–5pm daily.

Closed: Christmas Day and Good Friday.

Bangor Vineyard Shed is an award-winning cellar door and restaurant, with stunning views over Bangor vineyard, Bangor farm and Norfolk Bay. Join us for wine tastings and sales, and alfresco indoor/outdoor dining, showcasing local produce.

WWW.BANGORSHED.COM.AU

X12

BREAM CREEK

📍 321 Marion Bay Road,
Bream Creek
0412 112 500
rafe@breamcreekvineyard.com.au

Our cellar door is currently under construction – due to open April 2023!

WWW.BREAMCREEKVINEYARD.COM.AU



Bangor
VINEYARD SHED

A WARM COUNTRY
WELCOME AWAITS

FOOD | WINE
VINEYARD | VIEWS

20 Blackman Bay Road,
Dunalley, Tasmania.
On the Highway to Port Arthur.
03 62 535 558
Open 11am–5pm daily

www.bangorshed.com.au

BRINKTOP WINES

📍 66 Brinktop Road,
Penna
0407 224543
gill@brinktop.com.au

Open: 12pm-5pm most Friday afternoons.
By appointment other times.

WWW.BRINKTOP.COM.AU

X12

CLEMENS HILL

📍 686 Richmond Road,
Cambridge
0437 008 069
aurelia@clemenshill.com.au

Open: By appointment.

WWW.CLEMENSHILL.COM.AU

X12

CRAIGOW VINEYARD

📍 528 Richmond Road,
Cambridge
0418 126 027
info@craigow.com.au

Open: 11am-4pm weekends.
Other times by appointment.
Closed: Public holidays.

WWW.CRAIGOW.COM.AU

HADDOW + DINEEN

📍 C/- Bruny Island Cheese Co,
1807 Bruny Island Main Road,
Great Bay
(03) 6260 6353
hello@haddowanddineen.com.au

Open: 10am-4pm daily.

WWW.HADDOWANDDINEEN.COM.AU

INVERCARRON WINES

📍 1329 Elderslie Road,
Broadmarsh
0418 129 344
enquiries@invercarronfarm.com.au

Open: By appointment.

WWW.INVERCARRONWINES.COM.AU

MAPLETON VINEYARD

📍 890 Middle Tea Tree Road,
Tea Tree
0408 558 690
info@mapletonvineyard.com.au

Open: By appointment.

WWW.MAPLETONVINEYARD.COM.AU

MEET OUR WINE PEOPLE



GLAETZER DIXON

In Hobart, winemaker Nick Glaetzer and his wife Sally have established their award-winning Glaetzer-Dixon winery and tasting room in an old ice factory on the edge of the CBD. After moving from the Barossa Valley, Nick became the first Tasmanian winemaker to win Australia's biggest wine prize, the Jimmy Watson Memorial Trophy.

PUDDLEDUCK

Darren Brown started in the Tasmanian wine industry in 1985 when there were only eight main players. He is now the owner and winemaker at Puddleduck Vineyard – Tassie's much loved family vineyard voted best winery in Hobart three years running.



MERRIWORTH WINES

📍 63 Merriworth Road,
Tea Tree
0406 657 774
contact@merriworth.com.au

Open: By appointment.

WWW.MERRIWORTH.COM.AU

PETRICHOR WINES

📍 41 Rosewood Lane,
Tea Tree
0405 365 717
kate@petrichorwines.com.au

Open: By appointment.

WWW.PETRICHORWINES.COM.AU

FRANK'S CIDER HOUSE & CAFÉ



THE CELLAR DOOR OF MULTI AWARD WINNING FRANK'S CIDERS.
Clear, sparkling, medium sweet blends of Tasmanian heritage fruits. Huon Valley wines and a fresh seasonal menu.

3328 Huon Hwy, Franklin
T (03) 6266 3828 or 0438 663 525
E naomie@franklincider.com.au
frankscider.com.au

FRANK'S
A TASMANIAN CIDER STORY

SPRING BAY DISTILLERY – CAMBRIDGE



AWARD-WINNING NEW WORLD DISTILLERY.
Established in 2015, Spring Bay Distillery is a multiple award-winning new world distillery. We offer some of Tasmania's finest single malt whisky, gin and vodka. Tours and tastings by appointment.

205 Kennedy Drive, Cambridge
T 0400 331 408
E orders@springbaydistillery.com.au
springbaydistillery.com.au



STARGAZER WINE

📍 37 Rosewood Lane,
Tea Tree
0408 173 335
samantha@stargazerwine.com.au

No tasting facility at present – visit our website for more information.

WWW.STARGAZERWINE.COM.AU

TOLPUDDLE VINEYARD

📍 37 Back Tea Tree Road,
Richmond
(08) 8155 6003
info@tolpuddlevineyard.com

No tasting facility at present – visit our website for more information.

WWW.TOLPUDDLEVINEYARD.COM

Don't forget to share
your Tassie Wine
adventures!



#tassiewine



VINØ TASMANIA

Caring for our land

Being located so far south, on an island exposed to the Roaring Forties, presents unique challenges for our growers and makers. Rain, lack of rain, hail, snow, wind (lots of wind), but also plentiful sunshine - it makes it hard and risky to craft these wines, but our people are very talented.

KEEP AN EYE OUT FOR THIS SYMBOL ON WINE BOTTLES, WEBSITES AND PROMOTIONAL MATERIAL, AS WELL AS AT CELLAR DOORS IN TASMANIA.



Part of their skill comes through application of the VinØ (pronounced vin zero) Tasmania Program, a way to measure, monitor and improve sustainability practices.

This program ensures that Tasmania's hard-working wine producers are doing everything they can to produce very high-quality wine without negative impacts on the environment or local community.

VinØ Tasmania program members understand the connection with the land and people and recognise that we are custodians with a responsibility to future generations. View further details at winetasmania.com.au/vinzero.

The VinØ Tasmania program provides a framework on the world's best possible practices across each of the following critical areas, as listed below. Tasmanian wine producers use this framework to monitor, measure, report, benchmark and constantly improve their sustainability practices.

The VinØ Tasmania program focuses on the following key areas of vineyard and winery management:

THE WINERY –

Ensuring that the grapes get into the bottle as efficiently and responsibly as possible.

SOILS – Healthy soils for quality grapes.

PESTS & DISEASE – Managing pressures in an environmentally responsible manner.

BIODIVERSITY –

Using natural flora and fauna to support land and vineyard health.

WATER – Measuring and minimising water use in vineyards.

RECYCLING –

Responsibly managing waste and recycling.

PEOPLE – Looking after our valuable personnel and the broader community.

EMISSIONS –

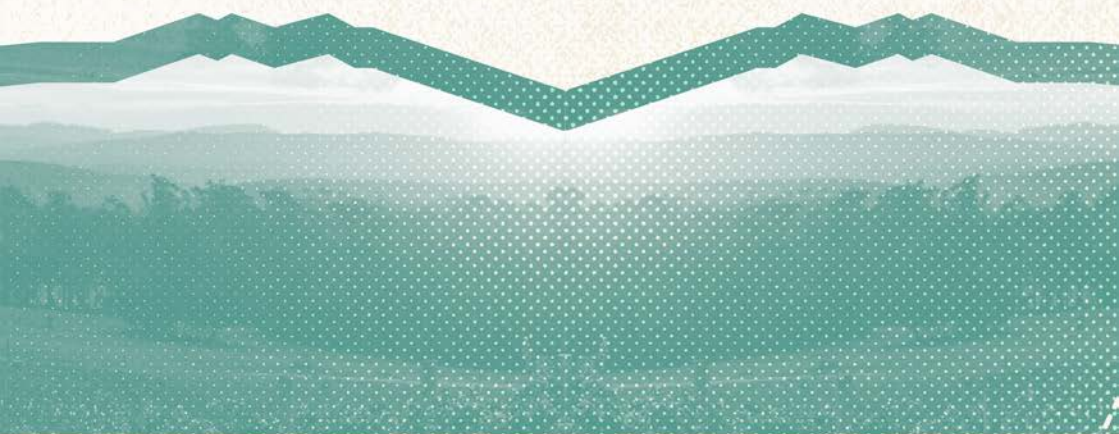
Measuring, managing, reducing and mitigating carbon emissions.

BIOSECURITY –

Protecting our valuable grapevines from unwanted nasties.



WINE TASMANIA



WINETASMANIA.COM.AU

