

# WINE TRAILS

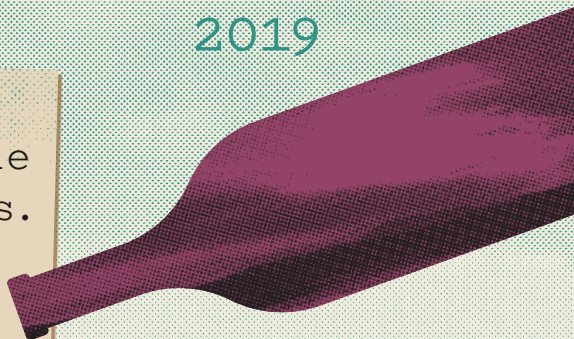
## AROUND TASMANIA

2019

Your guide to  
exploring Tassie  
wine & vineyards.

*with*  
THINGS TO SEE AND DO

*along the way!*



PRESENTED BY  
**WINE  
TASMANIA**



Wine producers with this icon displayed are participants in the Tasmanian Mixed Dozen freight scheme. This allows you to purchase a bottle or two from different vineyards as you travel around and have wine dispatched to your home address once you've reached a dozen bottles. Present your purchased wines (in dozen lots) at the last participating vineyard on your travels from which you purchase wine - they'll let you know the cost of freight and it will be sent straight to you.

Australia Post is our preferred provider for safe delivery of your mixed dozen wines. With thousands of locations across Australia, you can choose to have your wine delivered to your home, a secure 24/7 Parcel Locker or to your local participating Post Office (terms, conditions and collection time limits apply).

## WINE TASMANIA

Established in late 2006, Wine Tasmania is the peak body assisting the island's vignerons to be recognised as world leaders.

### WINE TASMANIA

Level 5, 29 Elizabeth Street, Hobart TAS 7000

T (03) 6223 3770

E [mail@winetasmania.net.au](mailto:mail@winetasmania.net.au)

[WWW.WINETASMANIA.COM.AU](http://WWW.WINETASMANIA.COM.AU)

© 2018 Wine Tasmania

### CREDITS

Design: Futago

Illustrations: The Noun Project

Images: courtesy Tourism Tasmania & Pete Harmsen and Liza-Jane Sowden.

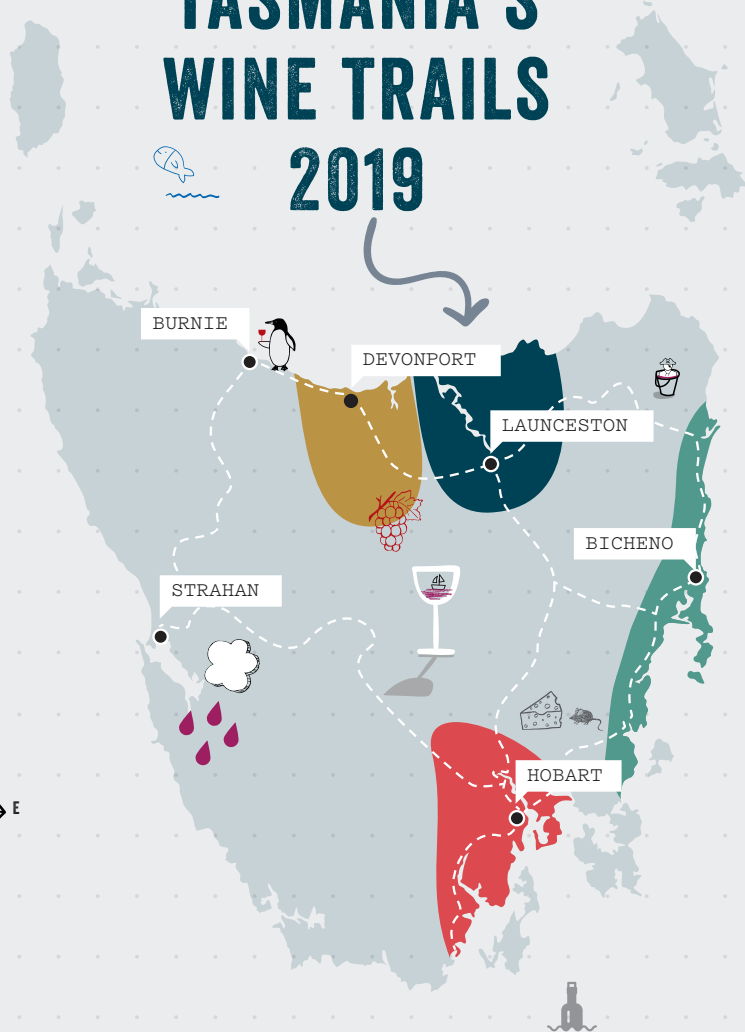
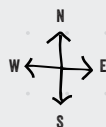
Other images courtesy Ghost Rock Vineyard and Tamar Ridge.

Printed in Tasmania

**DISCLAIMER:** Wine Tasmania has made every endeavour to ensure that details are correct at the time of printing (October 2018) but can accept no responsibility for any inaccuracy contained in this publication as a result of information supplied, and can accept no responsibility for subsequent changes or withdrawal of details or services shown.



# TASMANIA'S WINE TRAILS 2019



NORTH WEST

TAMAR VALLEY

EAST COAST

SOUTHERN

## WINE TRAILS CONTENTS

INTRODUCTION

2

EVENTS CALENDAR

3

NORTH WEST WINE TRAIL

4

TAMAR VALLEY WINE ROUTE  
(includes Tamar Valley  
& Pipers River)

10

EAST COAST WINE TRAIL

28

SOUTHERN WINE TRAIL  
(includes Coal River Valley,  
Derwent Valley & Huon/Channel)

36

VINEYARD LISTING

49



# CONGRATULATIONS

*on finding yourself in Australia's  
best tourism wine region!*



OK, WE MIGHT BE A LITTLE  
BIASED, BUT WE ARE SURE YOU  
WILL THOROUGHLY ENJOY YOUR  
TRAVELS AND THE VINO FROM OUR  
LITTLE ISLAND WITH LATITUDE.

Tasmania (or Tassie, as the locals know it) is one of the most spectacular places in the world. Explore lush green corners of paradise, picture perfect beaches, snow-capped mountains, breathtaking forests, waterfalls and lakes – you'll find just about every kind of scenery as you travel around our cellar doors. Not to mention the cute, cuddly and curious wildlife!

Our unique island allows us to grow and craft wines that jump out of the glass with their flavour intensity and make your mouth water with their refreshing structure.

You'll quickly find that Tasmania's vineyards are generally not found on flat land, but follow the slope of a hill or the curve of a valley. This makes for diverse and distinctive wines, which you will experience as you travel around and taste from different producers. Even wines from the same vineyard will be different across vintages, reflecting the significant seasonal variation we experience year by year.

You're bound to find something that will capture your heart and tastebuds as you travel around.

From converted heritage stables to ultra-modern cellar doors, chat and kick the dirt with our wine producers to find out why they have chosen to grow grapes and make wine in our extreme conditions on the edge of the world.

Tasmanian wine is made to enjoy with our local produce, so find a view somewhere and feast like a local! Pair a delicious

Tassie Pinot Noir with slow pulled pork, a glass of sparkling with some freshly shucked oysters, Chardonnay with Tassie's own scallop pies or local cheeses with a late harvest Riesling.

Tasmania's vineyards stretch across the island, with seven distinct areas divided into four wine experiences as shown in this guide. All are within easy reach of major centres or located en route to some of Tasmania's iconic attractions.

## VARIETAL WINE TRAILS – FOLLOW YOUR OWN PATH

If you have a favourite wine or two, you can create your own itinerary focusing on your preferred tipples. Create your own Sparkling or Pinot Noir Wine Trail or whatever takes your fancy. All you have to do is visit [www.winetasmania.com.au/wine\\_trails](http://www.winetasmania.com.au/wine_trails) and select your favourite variety/varieties.

You will find oodles of information to help you plan your visit to our little island of gourmet paradise at [www.discovertasmania.com](http://www.discovertasmania.com). You may also like to explore complementary food and beverage trails during your visit, such as the Tasmanian Cider Trail ([www.tascidertrail.com](http://www.tascidertrail.com)), Whisky Trail ([www.taswhiskytrail.com](http://www.taswhiskytrail.com)) and Seafood Trail ([www.tsic.org.au](http://www.tsic.org.au)).

Wine Tasmania encourages responsible consumption of alcohol and recommends the following: don't drink on an empty stomach, drink plenty of water, use spittoons, take a guided wine tour with one of the many specialists or, if you plan to drive, choose a designated driver.

ENJOY SAFELY,  
WINE TASMANIA

XXX



# EVENTS CALENDAR 2018–2019

THESE EVENTS PROVIDE THE  
PERFECT OPPORTUNITY TO  
SAMPLE SOME OF TASMANIA'S  
AWARD-WINNING WINES:

## **11–18 November 2018**

Effervescence Tasmania – a week of  
Tasmanian Sparkling events

[WWW.EFFERVESCENCETASMANIA.COM](http://WWW.EFFERVESCENCETASMANIA.COM)

## **16–18 November 2018**

Bicheno Food and Wine Festival

[WWW.BICHENOFESTIVALS.COM.AU](http://WWW.BICHENOFESTIVALS.COM.AU)

## **Spring 2018 – Summer 2019**

Launceston Night Market is held once  
a month on selected Friday nights

[WWW.LAUNCESTONNIGHTMARKET.COM](http://WWW.LAUNCESTONNIGHTMARKET.COM)

## **28 December 2018 – 3 January 2019**

The Taste of Tasmania, Hobart waterfront

[WWW.THETASTE OF TASMANIA.COM.AU](http://WWW.THETASTE OF TASMANIA.COM.AU)

## **26 January 2019**

Henley-on-Mersey Regatta, Latrobe

[WWW.HENLEYONMERSEY.COM.AU](http://WWW.HENLEYONMERSEY.COM.AU)

## **1–3 February 2019**

Festivale – a celebration of food and wine,  
Launceston

[WWW.FESTIVALE.COM.AU](http://WWW.FESTIVALE.COM.AU)

## **8–11 February 2019**

Australian Wooden Boat Festival, Hobart

[WWW.AUSTRALIANWOODENBOATFESTIVAL.COM.AU](http://WWW.AUSTRALIANWOODENBOATFESTIVAL.COM.AU)

## **17 February 2019**

Taste the Harvest, Devonport

[WWW.TASTETHEHARVESTDEVONPORT.COM.AU](http://WWW.TASTETHEHARVESTDEVONPORT.COM.AU)

## **22–24 February 2019**

Clarence Jazz Festival, Bellerive (Hobart)

[WWW.CLARENCEARTSANEVENTS.NET](http://WWW.CLARENCEARTSANEVENTS.NET)

## **24 February 2019**

Festival in the Park, Ulverstone

[WWW.FESTIVALINTHEPARK.ORG.AU](http://WWW.FESTIVALINTHEPARK.ORG.AU)

## **2–3 March 2019**

Southern & Eastern Vineyards'  
Open Weekend

[WWW.WINETASMANIA.COM.AU](http://WWW.WINETASMANIA.COM.AU)

## **10 March 2019**

Taste of the North West, Sheffield

[WWW.TASTE OF THE NORTHWEST.COM.AU](http://WWW.TASTE OF THE NORTHWEST.COM.AU)

## **10–11 March 2019**

A Taste of the Huon, Ranelagh  
(30 minutes south of Hobart)

[WWW.TASTE OF THE HUON.COM](http://WWW.TASTE OF THE HUON.COM)

## **24–26 May 2019**

Taste The Tamar – celebrate vintage  
in the Tamar Valley

[WWW.TASTETHETAMAR.COM.AU](http://WWW.TASTETHETAMAR.COM.AU)

## **7–23 June 2019**

Dark MoFo, Hobart

[WWW.DARKMOFO.NET.AU](http://WWW.DARKMOFO.NET.AU)

## **25–28 July 2019**

Devonport Jazz Festival

[WWW.DEVONPORTJAZZ.COM](http://WWW.DEVONPORTJAZZ.COM)

## **August 2019**

VIN Diemen – annual celebration of  
Tasmanian wine in Sydney & Melbourne

[WWW.VINDIEMEN.COM.AU](http://WWW.VINDIEMEN.COM.AU)

## **6–8 September 2019**

The Great Eastern Wine Weekend

[WWW.FREYCINETLODGE.COM.AU/WINEWEEKEND](http://WWW.FREYCINETLODGE.COM.AU/WINEWEEKEND)

## **7 September 2019**

Tamar Valley Feast (Junction Arts Festival)

[WWW.JUNCTIONARTSFESTIVAL.COM.AU](http://WWW.JUNCTIONARTSFESTIVAL.COM.AU)

## **1–31 October 2019**

Devonport Food & Wine Festival

[WWW.DEVONPORTFOODANDWINE.COM.AU](http://WWW.DEVONPORTFOODANDWINE.COM.AU)

## **27 October 2019**

The Seafarer's Festival, Bellerive (Hobart)

[WWW.CLARENCEARTSANEVENTS.NET](http://WWW.CLARENCEARTSANEVENTS.NET)

# NORTH WEST



## WINE TRAIL

FULL OF COLOUR AND FLAVOUR, TASMANIA'S NORTH WEST IS THE GATEWAY TO SOME OF TASMANIA'S MOST BEAUTIFUL NATURAL PLACES. EXPLORING THE NORTH WEST YOU'LL FIND CLASSIC COASTAL DRIVES, FOOD AND WINE TRAILS, STUNNING NATIONAL PARKS AND BEAUTIFUL NATURE RESERVES.

This region is the gateway to some of Tasmania's most beautiful natural places – including Cradle Mountain – one of Tasmania's most visited natural icons. It's a great place for touring around, with spectacular views at every turn and some of the State's prettiest cities and towns right on the water's edge on the scenic North West coast – each with their own unique attractions and relaxed seaside atmosphere.

The food and wine of the North West is special too – it's more than just nourishment – it represents the stories of the makers and the land from which it originates. Taste the wine at a local cellar door or take a bottle or two home as gifts or as delicious keepsakes from your visit.

The ideal growing conditions have inspired growers and makers committed to producing the very best in fresh crisp vegetables, dairy products, wines, whiskies and sweet treats for the hungry traveller – the ultimate paddock to plate experience. Visit the Cradle to Coast Tasting Trail to experience some of Tasmania's finest producers –

[WWW.CRADLETOCOASTTASTINGTRAIL.COM.AU](http://WWW.CRADLETOCOASTTASTINGTRAIL.COM.AU)

Go where the world's still wild, in a region that's home to breathtaking scenery, unbelievable history, gourmet produce and wine and the world's cleanest air. There's no end to the experiences on offer.

[WWW.TASMANIASNORTHWEST.COM.AU](http://WWW.TASMANIASNORTHWEST.COM.AU)

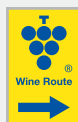
### THINGS TO SEE AND DO



- Walk to spectacular Dove Lake and take in the stunning wilderness views in the Cradle Mountain National Park.
- View beautiful artworks at the Cradle Mountain Wilderness Gallery, built around an enclosed garden in a wild setting.
- Visit the Devils@Cradle sanctuary which breeds Tasmania's three unique threatened carnivorous marsupials; the Tasmanian devil, the Spotted-tail and Eastern quolls.

- Marvel at the 1,900 trees of the Tasmanian Arboretum at nearby Eugenana, home to around 80 local bird species. Platypus can be reliably seen most days in Founder's Lake.
- Stroll the shore in easygoing seaside villages of Ulverstone, Penguin, and Wynyard. Visit the popular Penguin market.





Wine producers with this icon displayed participate in the Tasmanian Mixed Dozen freight scheme-see inside front cover for details.



#### WINERIES

- 1 Ghost Rock Vineyard
- 2 La Villa Wines
- 3 Prickly Mo Wines
- 4 Barringwood
- 5 Leven Valley Vineyard

#### LEGEND

- Open Daily
- Open Set Times
- Open by Appointment



## 1 GHOST ROCK



📍 1055 Port Sorell Road  
Northdown  
(03) 6428 4005  
mail@ghostrock.com.au



**Open:** 11am–5pm daily

**Closed:** Christmas Day, Boxing Day, Good Friday and some public holidays

Situated on the beautiful coastline of the North coast, just 10 minutes from the Spirit of Tasmania terminal. The Cellar Door captures stunning views of its vineyards, rolling countryside and sea. Complimentary tastings and lunch available.

[WWW.GHOSTROCK.COM.AU](http://WWW.GHOSTROCK.COM.AU)



## 2 LA VILLA WINES

📍 347 Mersey Main Road  
Spreyton  
0418 642 722  
lavillawines@iinet.net.au



**Open:** 11am–4pm Wednesday to Sunday

**Closed:** May–September, Christmas Day, Boxing Day and Good Friday

We welcome you through the gates of La Villa to experience the ambiance and taste our handcrafted, cool climate wines. Our seven hectare family owned vineyard is situated at Spreyton between Devonport and Latrobe—only a short distance from the Spirit Terminal. Group bookings by appointment only.

[WWW.LAVILLAWINES.COM.AU](http://WWW.LAVILLAWINES.COM.AU)





# GHOST ROCK

## T A S M A N I A

★★★★★ **WINERY** James Halliday Wine Companion, 2018

**AUSTRALIAN WINERY of the YEAR** Finalist - Winestate Magazine, 2017

**PEOPLE'S CHOICE AWARD** Melbourne + Sydney - Wine Tasmania Roadshow, 2017

---

**LOCATED** 15MIN FROM DEVONPORT



---

10MIN FROM THE SPIRIT OF TASMANIA

Open daily, 11am - 5pm | 1055 Port Sorell Rd NORTHDOWN | P 03 6428 4005

[ghostrock.com.au](http://ghostrock.com.au)  [ghostrockvineyard](https://www.facebook.com/ghostrockvineyard)  [ghost\\_rock\\_tasmania](https://www.instagram.com/ghost_rock_tasmania)

Established in 1999, Ghost Rock has grown to become one of the island's most exciting food and wine destinations. The passion for both can be seen first-hand in our highly awarded Cellar Door, and state-of-the-art Cooking School. Be consumed by local produce and local passion at North West Tasmania's pioneer winery.

### 3 PRICKLY MO WINES



62 Lakeside Road  
Eugenana  
0430 315 705  
tim.lynych7@gmail.com



**Open:** 12pm–5pm Thursday, Saturday and Sunday, 12pm–10pm + live music Friday nights  
**Closed:** Good Friday and Christmas Day

Twenty two years on, it was time to open a cellar door. But where?  
“I know! - the old shearing shed”.  
“Bit rough mate - weatherboards missing and the roof leaks.”  
“Nah, she’ll be right. I’ll fix it up!”  
“Those fancy wine ponces won’t like it.”  
“Once they taste our wine, they wouldn’t care if they were in a cow shed!”

[WWW.PRICKLYMO.COM.AU](http://WWW.PRICKLYMO.COM.AU)



### 4 BARRINGWOOD



60 Gillams Road  
Lower Barrington  
(03) 6287 6933 / 0484 618 767  
info@barringwood.com.au



**Open:** 10am–5pm Wednesday to Sunday (September–May) 10am–5pm Saturday & Sunday (June & July)  
**Closed:** August and public holidays

Share our stunning view across the lush Don Valley while enjoying guided tastings of our highly acclaimed wines, a sneaky glass on the deck or a delicious lunch of season local produce in our fully licensed restaurant.

[WWW.BARRINGWOOD.COM.AU](http://WWW.BARRINGWOOD.COM.AU)



## 5 LEVEN VALLEY VINEYARD



📍 321 Raymond Road

Gunns Plains

(03) 6429 1140

info@levenvalleyvineyard.com.au



**Open:** 11am–5pm Wednesday to Sunday

October–May

**Closed:** June–September, Christmas Day and Good Friday

Be consumed by the Leven Valley Vineyard. A small family owned vineyard, on a north-facing hill overlooking the picturesque Gunns Plains just 20 minutes south of Ulverstone. Come enjoy our wines and a picnic in the garden whilst taking in the panoramic views of the Leven River, in a tranquil and relaxed atmosphere.

[WWW.LEVENVALLEYVINEYARD.COM.AU](http://WWW.LEVENVALLEYVINEYARD.COM.AU)



Wine producers with this icon displayed participate in the Tasmanian Mixed Dozen freight scheme - see inside front cover for details.



## DEVIL'S @ CRADLE



### DINE WITH THE DEVIL

Enjoy fine wine and produce from the Northwest region, whilst experiencing amazing animal encounters at the Devils@Cradle sanctuary.

3950 Cradle Mountain Rd, Cradle Mountain

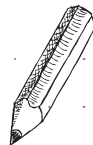
(03) 64921491

info@devilsatcradle.com

devilsatcradle.com



## NOTES



# TAMAR VALLEY

## WINE ROUTE



NORTHERN TASMANIA IS A FEAST OF HISTORIC STREETSCAPES  
AND HERITAGE ESTATES, RICH FARMLAND, PREMIER COOL  
CLIMATE WINES, FRESH PRODUCE AND A HAVEN FOR DESIGNERS  
AND CRAFT MAKERS EAGER TO TALK ABOUT THEIR WORK.

Launceston (the largest city in the region) is a vibrant hub for food, wine and culture. There's also a touch of wilderness with Cataract Gorge not far from the city centre.

The city is located on the banks of the Tamar River and is the gateway to the Tamar Valley, where you will find vineyards, lavender plantations, strawberry farms and orchards snuggled side-by-side along the life-giving waterway. It is Tasmania's oldest wine growing area and a place where premium cool climate wines, outstanding fresh produce and award-winning restaurants go hand in hand. In fact, it's a holiday destination in its own right.

The cellar doors, vineyard restaurants and farmers' markets of Launceston and the north offer some of the best gourmet experiences in Australia. From the Tamar Valley, to Pipers River in the north, through to Launceston and Relbia in the south, there are numerous vineyards within driving distance of each other. Cellar door tastings are a specialty of the Tamar Valley – expect to be pampered, surprised and delighted by your visit.

Fall in love with the Tamar Valley's easy charm – it is a voyage of modern indulgence and discovery of glorious history. Tasmania is a land that should be savoured slowly... with a glass of fine wine in hand and friendly locals to guide you on your way.

[WWW.DISCOVERTASMANIA.COM.AU](http://WWW.DISCOVERTASMANIA.COM.AU)

### THINGS TO SEE AND DO



- Experience Tasmania's rich mining history at the Beaconsfield Mine and Heritage Centre.
- View the work of some of the State's leading designers and craft makers at Design Tasmania.
- Visit Evandale, one of the best preserved late Georgian/early Victorian historic townships in Australia. Enjoy lunch or coffee at the beautiful Clarendon Arms Hotel.



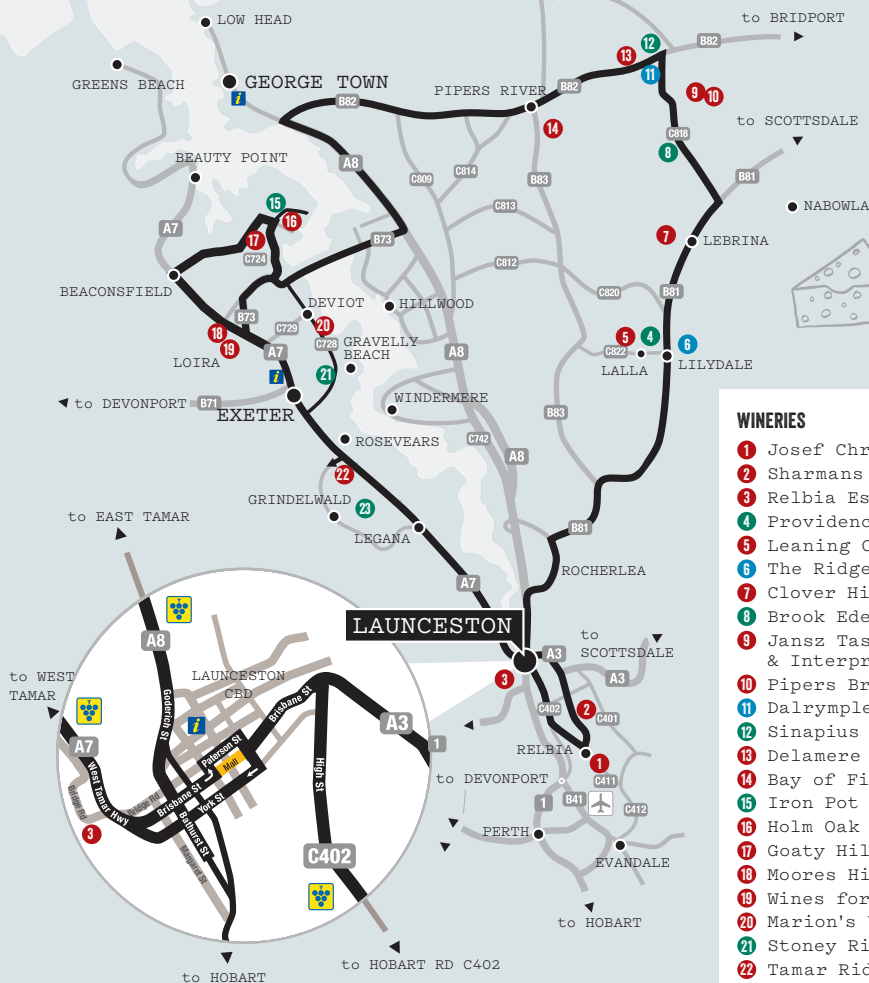
- Enjoy some of the freshest local produce matched with award winning wines at the Bridport Bunker Club – Winner of the Tasmanian Wine List of the Year People's Choice Award for 2017 and 2018, and co-winner of Judges' Choice Award for 2018!
- Take to the water and cruise the hidden reaches of the Tamar River and Cataract Gorge.
- Visit Penny Royal Adventures in the heart of Launceston for a range of experiences for young and old including rock climbing, cliff top walk, boat rides and convict adventures.



This way to the  
North West  
Wine Trail...



Wine producers with  
this icon displayed  
participate in the  
Tasmanian Mixed Dozen  
freight scheme-see  
inside front cover  
for details.



## WINERIES

- 1 Josef Chromy Wines
- 2 Sharmans Wines
- 3 Relbia Estate
- 4 Providence Vineyard
- 5 Leaning Church Vineyard
- 6 The Ridge North Lilydale
- 7 Clover Hill Wines
- 8 Brook Eden Vineyard
- 9 Jansz Tasmania Wine Room & Interpretive Centre
- 10 Pipers Brook Vineyard
- 11 Dalrymple Vineyards
- 12 Sinapius Vineyard
- 13 Delamere Vineyards
- 14 Bay of Fires Winery
- 15 Iron Pot Bay Vineyard
- 16 Holm Oak Vineyards
- 17 Goaty Hill Wines
- 18 Moores Hill
- 19 Wines for Joanie
- 20 Marion's Vineyard
- 21 Stoney Rise/Holyman
- 22 Tamar Ridge
- 23 Beautiful Isle Wines

## LEGEND

- Open Daily
- Open Set Times
- Open by Appointment

This way to the  
East Coast  
Wine Trail...

## 1 JOSEF CHROMY WINES

12

📍 370 Relbia Road  
Relbia (Route C411)  
(03) 6335 8700  
wine@josefchromy.com.au



**Open:** 10am–5pm daily  
**Closed:** Christmas Day

Bookings preferred for groups of five or more

Award winning restaurant and cellar door presenting one of Tasmania's best food and wine experiences. Located 15 minutes south of Launceston, set among beautiful gardens looking over a picturesque lake to our vineyard and winery. Book for a unique Go Behind the Label winery tour.

[WWW.JOSEFCHROMY.COM.AU](http://WWW.JOSEFCHROMY.COM.AU)



## 2 SHARMANS WINES

12

📍 175 Glenwood Road  
Relbia  
(03) 6343 0773 / 0421 919 795  
info@sharmanswines.com.au



**Open:** 10am–4pm daily  
**Closed:** Public holidays

Located in picturesque Relbia just south of Launceston, on the banks of the North Esk River, this family-owned vineyard and Cellar Door is a producer of many award winning wines.

Platters available 11am–3pm.  
Also available for functions and events.

[WWW.SHARMANSWINES.COM.AU](http://WWW.SHARMANSWINES.COM.AU)



TASTE THE EXPERIENCE...



WINERY | CELLAR DOOR | RESTAURANT | FUNCTIONS



  
**JOSEF CHROMY**  
TASMANIA

**OPEN DAILY**  
10.00am – 5.00pm

**RESTAURANT**  
11.45am - 2.30pm

370 Relbia Road Relbia  
Tasmania Australia 7258  
PHONE 03 6335 8700  
EMAIL [wine@josefchromy.com.au](mailto:wine@josefchromy.com.au)  
[www.josefchromy.com.au](http://www.josefchromy.com.au)

### 3 RELBIA ESTATE

12

📍 Penny Royal  
1 Bridge Road, Launceston  
(03) 6332 1010  
[wine@relbiaestate.com.au](mailto:wine@relbiaestate.com.au)



**Open:** 9am–5pm daily. Dinner Thursday, Friday and Saturday from 6pm  
**Closed:** Christmas Day

Groups and buses by appointment

Relbia Estate's cellar door incorporates a captivating wine bar and café overlooking Penny Royal lagoon near Cataract Gorge. The vineyard produces elegant cool climate wines showing crisp acidity, complexity and intensity.

[WWW.RELBIAESTATE.COM.AU](http://WWW.RELBIAESTATE.COM.AU)



### 4 PROVIDENCE VINEYARD

12

📍 236 Lalla Road  
Lalla (Route C822)  
1800 992 967  
[info@providence.com.au](mailto:info@providence.com.au)



**Open:** 10am–5pm daily, September to May (Thursday to Monday during Winter)

Tasmania's oldest vineyard offers sales of award winning wines, including wines from other small Tasmanian vineyards. Freight free by the dozen Australia wide. Friendly knowledgeable service.

[WWW.PROVIDENCE-VINEYARDS.COM.AU](http://WWW.PROVIDENCE-VINEYARDS.COM.AU)





## SHARMANS Wines

TASMANIA

## PREMIUM WINES FROM TASMANIA'S TAMAR VALLEY

BEAUTIFUL, RELAXED ATMOSPHERE  
WITH STUNNING VIEWS FROM OUR  
CONTEMPORARY CELLAR DOOR

- Award winning Tasmanian wines
- Platters available 11.00am - 3.00pm daily
- Available for functions and events
- Only 10 minutes from Launceston

**OPEN 7 DAYS A WEEK**  
**10.00am - 4.00pm**  
Closed Public Holidays

175 GLENWOOD ROAD,  
RELBIA TASMANIA 7258  
P. 6343 0773  
M. 0421 919 795  
E. [info@sharmanswines.com.au](mailto:info@sharmanswines.com.au)  
f Sharmans Wines  
[sharmanswines.com.au](http://sharmanswines.com.au)



## 5 LEANING CHURCH VINEYARD

12

📍 76 Brooks Road  
Lalla (Route C822)  
(03) 6395 4447  
cellardoor@leaningchurch.com.au



**Open:** 10am–5pm 7 days

**Closed:** Christmas Day, Boxing Day & Good Friday

Bookings preferred for groups

Leaning Church Vineyard guarantees a fresh, funky and fun approach to wine, whisky and food. Taste our estate-grown premium wines and single-malt whisky, enjoy lunch, peruse local art, tour the historic “leaning” church and admire spectacular vineyard views.

[WWW.LEANINGCHURCH.COM.AU](http://WWW.LEANINGCHURCH.COM.AU)



## 6 THE RIDGE NORTH LILYDALE

12

📍 106 Browns Road  
North Lilydale  
0408 192 000  
info@theridgenorthlilydale.com



**Open:** By appointment only, telephone  
0408 192 000

**Closed:** Christmas, Boxing Day and Good Friday

Our award-winning vineyard – 2017 Best Small Vineyard and runner up Vineyard of The Year 2017 – is cradled by distinctive spurs and foothills of Mt. Arthur, making it a landmark site producing 'classic Tasmania' Pinot Noir and Sparkling wines.

[WWW.THERIDGENORTHLILYDALE.COM](http://WWW.THERIDGENORTHLILYDALE.COM)



## PENNY ROYAL

LAUNCESTON

WINE BAR & RESTAURANT  
BRADY'S TAVERN  
PIZZA & ICE-CREAMERY



RELBIA ESTATE  
CELLAR DOOR

Open 7 days from 9am – 5pm

**EVENING DINING  
WEDNESDAY TO SATURDAY FROM 6PM**

Bookings (03) 6332 1000  
1 Bridge Road, Launceston  
[www.pennyroyallaunceston.com.au](http://www.pennyroyallaunceston.com.au)

## 7 CLOVER HILL WINES

12

📍 60 Clover Hill Road  
Lebrina  
(03) 5459 7900  
info@cloverhillwines.com.au



**Open:** Summer 10am–4:30pm daily.  
Winter 11am–4:30pm Monday–Thursday &  
10am–4:30pm Friday–Sunday  
**Closed:** Christmas Day and Boxing Day (open  
all other public holidays)

Clover Hill is one of Australia's principal  
Tasmanian Cuvées. Clover Hill Wines  
crafts wines of pedigree due to its ideal  
location in North Eastern Tasmania, the  
superior quality of its cool-climate fruit  
and the intimate attention to detail given  
by its dedicated winemakers.

[WWW.CLOVERHILLWINES.COM.AU](http://WWW.CLOVERHILLWINES.COM.AU)



## 8 BROOK EDEN VINEYARD

12

📍 167 Adams Road  
Lebrina  
0411 525 649  
mail@brookeden.com.au



**Open:** 11am–5pm Thursday–Tuesday (Sep–Jun)  
Open July–Aug by appointment only  
**Closed:** Wednesdays, Good Friday & Christmas Day

Brook Eden produces single varietal  
wines and traditional sparkling from its  
beautiful site in Lebrina. The family brings  
a Northern Italian tradition to its elegant  
wines and specialises in carefully cellared  
aged wines.

Stuzzichini (small plates of goodness)  
now available.

[WWW.BROOKEDEN.COM.AU](http://WWW.BROOKEDEN.COM.AU)



*Clover Hill  
encapsulates the  
region's natural  
beauty and  
refined balance.*

This natural elegance  
can be seen throughout  
the vineyard and in the  
wines from Tasmania's  
premier sparkling house.



**CLOVER HILL**

A Pipers River, 60 Clover Hill Road, Lebrina  
T 03 6395 6114 W [cloverhillwines.com.au](http://cloverhillwines.com.au) f @  
**Open 7 days a week except Christmas & Boxing Day**  
**Oct - Jun 11am to 4.30pm Jul - Sep 11am to 4.30pm**

## 9 JANSZ TASMANIA

12

Wine Room &  
Interpretative Centre  
1216B Pipers Brook Road,  
Pipers Brook (Route C818)  
(03) 6382 7066  
info@jansz.com.au



**Open:** 10am–4.30pm daily  
(Anzac Day 12 noon–4.30pm)  
**Closed:** Christmas Day and Good Friday  
Groups and buses by appointment only

Visit the Jansz Tasmania Wine Room and savour the experience. Taste the wines, stroll around the picturesque grounds and discover why Tasmanian sparkling is among the best in the world.

[WWW.JANSZ.COM.AU](http://WWW.JANSZ.COM.AU)



## 10 PIPERS BROOK VINEYARD

12

1216 Pipers Brook Road  
Pipers Brook  
(03) 6382 7555  
cellardoor@pipersbrook.com



**Open:** 10am–5pm daily 1 October–30 April,  
11am–4:30pm Thu–Mon 1 May–30 September  
**Closed:** Christmas Day and other selected  
public holidays – check Facebook for details

Ocean views, a glimpse of Ninth Island on a clear day and some of the oldest vines in the region welcome you to our 1974 established winery and cellar door. Tasting & sales of Kreglinger, Pipers Brook & Ninth Island ranges. Café providing hearty Tasmanian produce, check Facebook for current opening hours.

[WWW.KREGLINGERWINEESTATES.COM](http://WWW.KREGLINGERWINEESTATES.COM)



**POP IN.**  
Méthode Tasmanoise®  
www.jansz.com.au

*Valleybrook* Wine On Wheels  
Tours

Indulge your senses with our guided tours along the sensational Tamar Valley wine route, for a unique wine tasting experience.

*We Drive you to Drink*

0451 965 841 | info@valleybrook.com.au  
www.valleybrook.com.au

## 11 DALRYMPLE VINEYARDS

📍 1337 Pipers Brook Road  
Pipers Brook (Route C818)  
(03) 6382 7229  
info@dalrymplevineyards.com



**Open:** By appointment, or daily with self audio tour

Stand in this small vineyard and stare into the face of Bass Strait and feel the maritime wind which helps the slow ripening of our premium grapes. Since 1987 the Dalrymple Vineyard has crafted some of Australia's most distinctive cool climate wines.

[WWW.DALRYMPLEVINEYARDS.COM](http://WWW.DALRYMPLEVINEYARDS.COM)



## 12 SINAPIUS VINEYARD



📍 4232 Bridport Road  
Pipers Brook (Route B82)  
0417 341 764 / 0418 998 665  
wine@sinapius.com.au



**Open:** 12pm–5pm daily, August to June

**Closed:** July and Christmas Day

Groups and buses by appointment only

Sustainable grape growing, low yielding closed planted vines and traditional artisan winemaking are used to craft unique single vineyard wines, including Chardonnay and Pinot Noir, at our family owned vineyard, winery and cellar door. A true expression of terroir.

[WWW.SINAPIUS.COM.AU](http://WWW.SINAPIUS.COM.AU)



## BRIDPORT BUNKER CLUB

We aim to use only the freshest and best local Tassie produce, focusing on the North East where possible. Our Chefs aim to create taste sensations and flavours that are unique to the BUNKER.

### Multi-Award Winning

2017/18 Tasmanian Wine List of the Year  
People's Choice

2018 Tasmanian Wine List of the Year  
Judges Choice

Best RSL, Sporting or Community Club  
(3rd year in a row).

Open Tuesday through to Sunday for lunch  
Tuesday to Saturday for dinner 6pm onwards.  
Bar opens from 11am.

**67 Main Street, Bridport | 03 6356 1146**  
[thebridportbunkerclub.com.au](http://thebridportbunkerclub.com.au)

## 13 DELAMERE VINEYARDS

12

4238 Bridport Road  
Pipers Brook (Route B82)  
(03) 6382 7190  
info@delamerevineyards.com.au



**Open:** 10am–5pm daily

**Closed:** Christmas, Boxing Day and Good Friday

Bookings preferred for groups over 10

Grown, vinified and bottled on our Pipers River estate. Delamere reflects our geography, passion and determination to produce world class wines. Come and experience for yourself one of Tasmania's unique grower producers.

[WWW.DELAMEREVINEYARDS.COM.AU](http://WWW.DELAMEREVINEYARDS.COM.AU)



## 14 BAY OF FIRES WINERY

12

40 Baxters Road  
Pipers River  
03 6382 7622  
cellardoor@bayoffireswines.com.au



**Open:** 11am–4pm Monday to Friday and

10am–4pm Saturday and Sunday

**Closed:** Christmas, Boxing Day and Good Friday

Group bookings by appointment

Bay of Fires Winery is home to the Bay of Fires and Eddystone Point range of cool climate wines and one of Australia's world class sparklings—House of Arras. Tasmanian Tasting Platters and light food options available.

[WWW.BAYOFFIRESWINES.COM.AU](http://WWW.BAYOFFIRESWINES.COM.AU)



Launceston's premier waterfront dining experience  
Seaport

Book online at [mudbar.com.au](http://mudbar.com.au)  
03 6334 5066

## 15 IRON POT BAY VINEYARD

12

📍 7 West Bay Road  
Rowella  
(03) 6394 7008  
info@ironpotbayvineyard.com.au



**Open:** 11am–5pm daily in Summer and  
11am–4pm Thursday to Sunday in Winter  
**Closed:** All public holidays

Iron Pot Bay Vineyard is a family owned business, located in the beautiful Tamar Valley. Now serving lunch from our century old cottage with sales of award winning sparkling, white and red wines. With a story in every bottle...

[WWW.IRONPOTBAYVINEYARD.COM.AU](http://WWW.IRONPOTBAYVINEYARD.COM.AU)



## 16 HOLM OAK VINEYARDS

12

📍 11 West Bay Road  
Rowella (Route C724)  
(03) 6394 7577  
admin@holm oakvineyards.com.au



**Open:** 11am–5pm daily September to May,  
11am–4pm daily June to August  
**Closed:** Christmas Day

Buses by appointment only

Holm Oak is one of Tasmania's most highly regarded family wine producers. Our philosophy is to make single vineyard wines with personality and character that reflect us and the place where we live. Rustic, down-to-earth, not super polished, but genuine and authentic.

[WWW.HOLMOAKVINEYARDS.COM.AU](http://WWW.HOLMOAKVINEYARDS.COM.AU)



★★★★★  
James Halliday  
Wine Companion 2018

Gourmet Traveller Wine  
Best Wine Tasting Experience  
Northern Tasmania 2016 & 2017

11 West Bay Road, Rowella TAS 7270  
Phone: 03 6394 7577   

[HOLMOAKVINEYARDS.COM.AU](http://HOLMOAKVINEYARDS.COM.AU)

## 17 GOATY HILL WINES

12

530 Auburn Road  
Kayena  
1300 819 997  
info@goatyhill.com



**Open:** 11am–5pm daily

**Closed:** Christmas Day, Boxing Day  
and Good Friday

Groups and buses by appointment

The partners in Goaty Hill Wines are close friends from two families who together started the journey toward making iconic wines in the famous Tamar Valley. Natasha, Kristine, Markus and Tony warmly invite you to join them in their journey of learning, sharing and enjoying fine wine with friends. Cheese plates and vineyard platters available.

[WWW.GOATYHILL.COM](http://WWW.GOATYHILL.COM)



## 18 MOORES HILL

12

3343 West Tamar Highway  
Sidmouth (Route A7)  
(03) 6394 7649  
enquiries@moorehill.com.au



**Open:** 10am–5pm daily

**Closed:** Christmas Day

Visit Tasmania's first 100% off grid winery on your Tamar travels. Savour the depth of flavours in our selection of delicious hand-crafted wines. Settle in at our cellar door and enjoy the vineyard and valley views from the verandah. Try a Tasmanian tasting plate from a range that showcases produce of the region or indulge in a Tasmanian whisky tasting.

[WWW.MOORESHILL.COM.AU](http://WWW.MOORESHILL.COM.AU)



### *Two families, one vineyard.*

*At Goaty Hill Wines we believe in leaving nothing to chance. It is why we think winemaking begins long before the fruit leaves the vine.*

*And it is why our people, this place, and our passion cannot be recreated. So here we are, with a sense of place. Our wine journey starts here.*

*Welcome to our cellar door.*

## 19 WINES FOR JOANIE



163 Glendale Road  
Sidmouth  
(03) 6394 7005 / 0429 006 222  
info@winesforjoanie.com.au



**Open:** 11am–5pm daily  
**Closed:** Christmas Day and Boxing Day

Nestled in the heart of the Tamar Valley, you'll find Wines for Joanie. Hidden amidst farmland, green rolling hills and vineyards, this place is truly breathtaking. Soak up the gorgeous rural views, pull up a chair at our table and relax, with a glass in hand of course. Come and find us...

[WWW.WINESFORJOANIE.COM.AU](http://WWW.WINESFORJOANIE.COM.AU)



## 20 MARION'S VINEYARD



335 Deviot Road  
Deviot  
0437 540 422 / (03) 6394 7434  
info@marionsvineyard.com.au



**Open:** 11am–5pm daily

Marion's Vineyard invites you to one of Australia's most visually spectacular vineyard sites overlooking the Tamar River. Planted in 1979, our protected macro pocket produces sparkling wines, aromatic whites to full bodied reds including Syrah and Tempranillo. Come for the wines, stay for the view and, like us... you may never want to leave.

[WWW.MARIONSVINEYARD.COM.AU](http://WWW.MARIONSVINEYARD.COM.AU)



MOORES HILL



### POWERED BY THE SUN TASMANIA'S FIRST 100% OFF-GRID WINERY

A family owned vineyard  
producing delicious wines  
of depth, purity and personality.

Relax and enjoy views over the  
vineyard, wine tasting, local produce  
platters & Tasmanian whisky tasting.

Cellar door open 10am -5pm daily.  
3343 West Tamar Hwy, Sidmouth  
Just 35 min from Launceston  
PH: 03 6394 7649

[www.MooresHill.com.au](http://www.MooresHill.com.au)

## 21 STONEY RISE / HOLYMAN

12

96 Hendersons Lane  
Gravelly Beach (Route C728)  
0418 853 924  
info@stoneyrise.com



**Open:** 11am–5pm Thursday to Monday

**Closed:** Tuesday & Wednesday

Groups and buses by appointment only

With winemaker Joe Holyman regarded as one of Tasmania's best producers, and possibly the most relaxed – Stoney Rise is a must-do detour along the Tamar River.

★★★★★ 2019 Halliday Wine Companion

Cellar Door – Winery –Vineyard.

[WWW.STONEYRISE.COM](http://WWW.STONEYRISE.COM)



## 22 TAMAR RIDGE

12

1a Waldhorn Drive,  
Rosevears (Route A7)  
(03) 6330 0300  
info@tamarridge.com.au



**Open:** Cellar Door 10am–5pm daily

**Closed:** Christmas Day and Good Friday

Group bookings by appointment only

With spectacular views of the Tamar Valley and mountains, our cellar door offers tastings of the award winning wines of Tamar Ridge and Pirie Tasmania. Selected older vintages of Pinot Noir are available exclusively in the cellar door. Platters by Hubert and Dan available from 11am until 3pm.

[WWW.TAMARRIDGE.COM.AU](http://WWW.TAMARRIDGE.COM.AU)



## TASTING ROOM AND CELLAR DOOR

Located 20 minutes north of Launceston our Tasting Room and Cellar is perched high on the hills overlooking the beautiful Tamar River. Here we offer tastings and sales of Pirie Sparkling and Tamar Ridge wines along with rare and aged vintages of Pinot Noir that are exclusive to the cellar door.

Hubert and Dan provide fresh, seasonal platters with local & house made cheeses, salmon & charcuterie to complement the tasting experience. Please also enquire about our regular Thursday night dinners.

Open daily 10am to 5pm  
Bookings for lunch and private tastings recommended  
20 minutes from Launceston  
1A Waldhorn Drive Rosevears 7277  
Phone (03) 6330 0300 [www.tamarridge.com.au](http://www.tamarridge.com.au) @tamarridgewines



## 23 BEAUTIFUL ISLE WINES

12

📍 2 Upper McEwan's Road  
Legana  
0411 618 121 / 0418 379 548  
info@beautifulislewines.com



**Open:** 11am-5pm Thursday to Monday,  
September to July. Tuesdays, Wednesdays and  
August by appointment

**Closed:** Christmas and Boxing Day

Beautiful Isle Wines is a family team  
making wines with minimal interventions,  
from sparkling to field blends to rich  
reds and cider. Our labels are a tribute to  
Tasmania's apple crate art of the 1920's.

[WWW.BEAUTIFULISLEWINES.COM](http://WWW.BEAUTIFULISLEWINES.COM)



## APOGEE

📍 1083 Golconda Road  
Lebrina  
03 6395 6358  
info@apogeetasmania.com



**Open:** By appointment for tastings and sales

Taste some of Australia's finest cool  
climate sparkling and table wines in our  
1860s original farm cottage. The Apogee  
tasting experience is intimate and  
picturesque.

[WWW.APOGEETASMANIA.COM](http://WWW.APOGEETASMANIA.COM)



**WINE**  
**WILDLIFE & WILDERNESS**  
*Full and half day  
Tamar Valley wine tours*  
[prestigeleisuretours.com.au](http://prestigeleisuretours.com.au)  
**0429 030 588**

'Wow, what an  
unforgettable  
experience!  
We can't recommend  
this highly enough,  
it was a taste of the area  
rather than just the wine.  
Our guide delivered  
an experience not just  
a tour and we will  
cherish it as well as  
recommend it'.

Erin D. NSW - Trip Advisor



**PRESTIGE**  
TOURS TASMANIA



## BELL & GONG

📍 'Valleyfield Vineyard'  
873 Illawarra Road  
Longford  
0417 423 889  
info@bellandgong.com

**Open:** 10am–3pm Thursday to Monday,  
other times by appointment

[WWW.BELLANDGONG.COM](http://WWW.BELLANDGONG.COM)



## CABBAGE TREE HILL WINES

📍 104 Greensbeach Road  
Beaconsfield  
0428 824 867  
info@cabbagetreehillwines.com.au

**Open:** 11am–5pm daily

**Closed:** Christmas, Boxing Day and Good Friday

Cellar Door opening January 2019.

[WWW.CABBAGETREEHILLWINES.COM.AU](http://WWW.CABBAGETREEHILLWINES.COM.AU)

## CHARTLEY ESTATE

📍 38 Blackwood Hills Road  
Rowella  
0418 124 690  
plhkossmann@southcom.com.au

**Open:** By appointment

[WWW.CHARTLEYESTATEVINEYARD.COM.AU](http://WWW.CHARTLEYESTATEVINEYARD.COM.AU)



## GREY SANDS

📍 6 Kerrison's Road  
Glengarry  
(03) 6396 1167 / 0407 96 1167  
info@greysands.com.au

**Open:** 10am–6pm on the first FULL weekend  
of the month from October 2018 to April 2019  
inclusive, and any additional weekends as per  
our website/Facebook page. All other times by  
appointment only.

Visitors are welcome to BYO picnic to enjoy in  
our 1.5 Ha garden.

[WWW.GREYSANDS.COM.AU](http://WWW.GREYSANDS.COM.AU)



## VELO WINES

📍 755 West Tamar Highway  
Legana (Route A7)  
(03) 6330 1582  
info@velowines.com.au  
**Restaurant** (03) 6330 3677  
info@timbrekitchen.com.au

**Open:** Cellar Door opening times vary during the year, please check our website

[WWW.VELOWINES.COM.AU](http://WWW.VELOWINES.COM.AU)



## WATERTON HALL WINES

📍 61 Waterton Hall Road  
Rowella (Route C724)  
0417 834 781  
info@watertonhall.com.au

**Open:** By appointment only for visits and tastings. New Pop-Up Cellar Door – please check website and social media for dates

[WWW.WATERTONHALL.COM.AU](http://WWW.WATERTONHALL.COM.AU)



## WINTER BROOK VINEYARD

📍 150 Hjorts Road  
Loira  
03 6394 7071 / 0468 999 307  
wine@winterbrookvineyard.com.au

**Open:** 11am-4pm Wednesday to Sunday

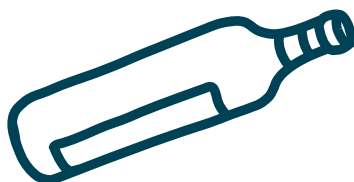
[WWW.WINTERBROOKVINEYARD.COM.AU](http://WWW.WINTERBROOKVINEYARD.COM.AU)



**Clarendon Arms**  
EVANDALE TASMANIA  
— CIRCA 1847 —  
**HONEST FOOD CRAFT BEER**  
**FAMILY PUB** open fire + coffee  
**LUNCH & DINNER**

HISTORIC EVANDALE PUB - 5 MINS TO AIRPORT

11 RUSSELL ST EVANDALE t:03 6391 8181  
www.clarendonarms.com.au book online



## TAMAR RIVER CRUISES



### TIME IS PRECIOUS, SPEND IT WISELY...

Relax and enjoy a variety of Tamar Valley wines on board the Tamar Odyssey whilst cruising the magnificent Cataract Gorge and Tamar River.

Cruise Terminal, Homepoint Parade,  
Launceston  
(03) 6334 9900  
[tamarrivercruises.com.au](http://tamarrivercruises.com.au)



## BEACONSFIELD MINE & HERITAGE CENTRE



### COME AND PLAY WITH OUR HISTORY

Immerse yourself in our stories and hands on displays. Spend an hour or two exploring, view the famous iconic headframe.

West Street, Beaconsfield  
(03) 6383 1473

[beaconsfieldheritage.com.au](http://beaconsfieldheritage.com.au)



## BLACK COW BISTRO



### WARM, CASUAL BISTRO

Showcasing grass fed, free range, artificial hormone free Tasmanian beef with a great selection of local wines.

70 George Street, Launceston  
(03) 6331 9333  
[info@blackcowbistro.com.au](mailto:info@blackcowbistro.com.au)  
[blackcowbistro.com.au](http://blackcowbistro.com.au)



## DESIGN TASMANIA



Design Tasmania is a gallery space, retail store and home to the Tasmanian Wood Collection. Contemporary exhibitions, alongside furniture, lighting, glass, ceramics, jewellery, and textiles.

Cnr Brisbane & Tamar Streets, Launceston  
(03) 6331 5506  
[shop@designtasmania.com.au](mailto:shop@designtasmania.com.au)  
[designtasmania.com.au](http://designtasmania.com.au)



## STILLWATER RESTAURANT AND PROVIDORE



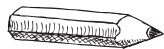
### CAFE. RESTAURANT. WINE BAR.

Contemporary Tasmanian Cuisine served in the casually elegant atmosphere of an 1830s flour mill overlooking the Tamar River.

2 Bridge Road, Ritchie's Mill, Launceston  
(03) 6331 4153  
[info@stillwater.net.au](mailto:info@stillwater.net.au)  
[stillwater.net.au](http://stillwater.net.au)



# NOTES





# EAST COAST



## WINE TRAIL



THE GREAT EASTERN DRIVE TAKES YOU ALONG THE PATH OF THE EAST COAST WINE TRAIL AND STRAIGHT TO SOME OF THE BEST CELLAR DOORS IN TASMANIA. THIS IS ONE OF THE STATE'S PREMIER WINE GROWING REGIONS, KNOWN FOR ITS FINE COOL CLIMATE VARIETIES.

Local cellar doors offer tastings and wine sales, and east coast restaurants showcase the finest vintages, as well as other handcrafted beverages including gins, whiskies and ciders. Meet winemakers and distillers and sample fine wines accompanied by tasting plates of Tasmanian cheeses and other luscious morsels, including homemade ice cream and the freshest seafood imaginable, all while soaking up incredible east coast views.

Take a weekend, a few days or longer to explore, feast and wander. Stroll through the busy coastal towns of Orford, Swansea, Bicheno or St Helens. Stay at a B&B with an ocean view, a luxury lodge or a coastal hotel.

Then, when you need time to digest all those delicious flavours you've been spoiling yourself with, grab a taste of some of the region's most memorable experiences—kayak along the coast, take a cruise to the east coast's famed beaches, or work up a fresh appetite on some of Australia's best walks.

The Great Eastern Drive is a true journey of discovery that will lead you to the best-loved places and experiences of Tasmania's east coast region. Here, every turn unveils a new view to take your breath away, and a new invitation to stop and explore.

[WWW.EASTCOASTTASMANIA.COM](http://WWW.EASTCOASTTASMANIA.COM)

### THINGS TO SEE AND DO



- From Orford, take a cruise to Maria Island to observe wombats and wallabies as they graze the Darlington settlement. Don't miss the Painted Cliffs and Fossil Cliffs.
- Visit the beautiful seaside towns of Swansea, Bicheno and St Helens – all rich in history with their beaches, cafes, churches and cottages.
- Meet some of the local wildlife at the nightly fairy penguin parade in Bicheno.

- Enjoy the many walks and spectacular views on offer from the Cape Tourville lighthouse, on the edge of the Freycinet National Park, to the spectacular white sands of Wineglass Bay, Binalong Bay and the Bay of Fires.
- Venture into the Freycinet National Park by cruise boat, sea kayak or on foot to make the unique journey to Wineglass Bay, one of the world's finest beaches.





Wine producers with this icon displayed participate in the Tasmanian Mixed Dozen freight scheme - see inside front cover for details.

*This way to Tamar Valley and North West Wine Trails.*

*To Bay of Fires (just a few minutes)*

CONARA

A4

ROSSARDEN

FINGAL

CHAIN OF LAGOONS

AVOCA

CAMPBELL TOWN

BICHENO

CRANBROOK

SWANSEA

COLES BAY

FREYCINET PENINSULA

OATLANDS

LITTLE SWANPORT

*This way to the Southern Wine Trail...*

TRIABUNNA

ORFORD

MARIA ISLAND

#### WINERIES

- 1 Darlington Vineyard
- 2 Milton Vineyard
- 3 Spring Vale Vineyard
- 4 Craigie Knowe Vineyard
- 5 Gala Estate
- 6 Devil's Corner Cellar Door & Lookout
- 7 Freycinet Vineyard
- 8 Iron House
- 9 Priory Ridge

#### LEGEND

- Open Daily
- Open Set Times
- Open by Appointment

## 1 DARLINGTON VINEYARD

12

63 Holkham Court  
Orford  
(03) 6257 1630  
sales@darlingtonvineyard.com.au



**Open:** 10am–5pm daily

**Closed:** Christmas and Boxing Day

This small vineyard is located in the seaside town of Orford and overlooks the historic settlement of Darlington on Maria Island. The hand-tended vines produce award winning, cool climate Pinot Noir, Chardonnay, Riesling and Sauvignon Blanc.

[WWW.DARLINGTONVINEYARD.COM.AU](http://WWW.DARLINGTONVINEYARD.COM.AU)



## 2 MILTON VINEYARD

12

14635 Tasman Highway  
Swansea  
(13km North of Swansea)  
(03) 6257 8298  
wine@miltonvineyard.com.au



**Open:** Cellar Door 10am to 5pm daily

**Closed:** Christmas and Boxing Day

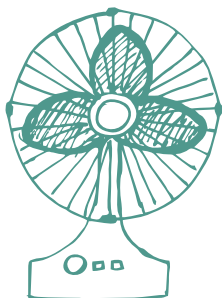
The Dunbabin family produce premium quality, award winning cool climate wines. The aromatic whites and Pinot Noir are our specialty. In the warmer months enjoy lunch overlooking the lake and vineyard (available October–April).

Vineyard of the Year 2017.

[WWW.MILTONVINEYARD.COM.AU](http://WWW.MILTONVINEYARD.COM.AU)



Wine producers with this icon displayed participate in the Tasmanian Mixed Dozen freight scheme - see inside front cover for details.



### 3 SPRING VALE VINEYARDS



📍 130 Spring Vale Road  
Cranbrook  
(03) 6257 8208  
sales@springvalewines.com

**SPRING VALE**  
FARMSTEAD CRANBROOK TASMANIA  
A family business

**Open:** 11am–4pm daily

**Closed:** Christmas and Good Friday

A family owned vineyard, situated just north of Swansea, producing Pinot Noir, Gewurztraminer, Pinot Gris, Chardonnay, Sauvignon Blanc and Sparkling. It features an original convict-built stable (c. 1842) converted for cellar door tastings.

[WWW.SPRINGVALEWINES.COM](http://WWW.SPRINGVALEWINES.COM)



### 4 CRAIGIE KNOWE



📍 80 Glen Gala Road  
Cranbrook  
0499 901 109  
enquiries@craigieknowe.com.au

*Craigie Knowe*  
VINEYARD

**Open:** Open: 10am–4pm daily during peak season, Friday to Monday during off season  
Please check website if unsure

**Closed:** Christmas and Boxing Day

Call in to our rustic cellar door situated in the original winery. Enjoy a gourmet vineyard plate, cheese board or chocolate and wine experiences and have a chat to owners Sandy & Glenn while sampling our award winning wines.

[WWW.CRAIGIEKNOWE.COM.AU](http://WWW.CRAIGIEKNOWE.COM.AU)



## THE FARM SHED

EAST COAST WINE CENTRE

WINES FROM 20 EAST COAST VINEYARDS

TASTINGS + SALES

LOCAL WHISKY + GIN

ART + DESIGN

53 Burgess Street Bicheno Tasmania  
03 6375 1868  
thefarmshedtass.com.au

Discover Wineglass Bay  
from the water.



Coles Bay | Ph 03 6257 0355

[www.wineglassbaycruises.com](http://www.wineglassbaycruises.com)

## 5 GALA ESTATE

12

14891 Tasman Highway  
Cranbrook  
(03) 6257 8641 / 0408 681 014  
hello@galaestate.com.au



**Open:** 10am–4pm daily, September to May  
**Closed:** June, July, August, Christmas Day and Boxing Day

As the second oldest family business in Tasmania, we have been living and loving this land for 200 years. Our pristine natural environment allows us to consistently produce some of Tasmania's best wines. Visit our James Halliday 5 Star Winery and discover our award winning wines.

Gala Estate, inspiring Tasmania!

[WWW.GALAESTATE.COM.AU](http://WWW.GALAESTATE.COM.AU)



## 6 DEVIL'S CORNER

12

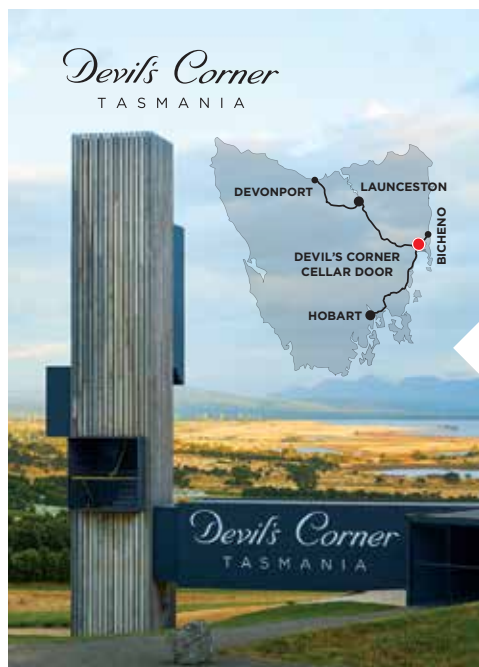
Cellar Door and Lookout  
Sherbourne Road  
Apslawn  
(8km south of the Coles Bay turn off)  
(03) 6257 8881  
info@devilscorner.com.au

*Devil's Corner*  
TASMANIA

**Open:** 10am–5pm daily

Devil's Corner Cellar Door overlooks the spectacular scenery of Moulting Lagoon and the Freycinet Peninsula. Enjoy the amazing views with a glass of our award winning wine while you choose from a selection of delicious East Coast seafood or wood fired pizzas. Coffee and gelato also available all day.

[WWW.DEVILSCORNER.COM.AU](http://WWW.DEVILSCORNER.COM.AU)



## VISIT OUR AWARD WINNING CELLAR DOOR AND LOOKOUT

### WINE

Enjoy tastings of Devil's Corner wines by our friendly staff. Try Cellar Door exclusive Mt Amos Pinot Noir and Resolution Pinot Gris.

### LOCAL FOOD

The Fishers freshly shucked oysters and seafood straight from the Freycinet Marine Farm. Tombolo Café gourmet wood-fired pizza, gelato and the best coffee on the East Coast.

### LOCATION

Visit our award winning architecturally designed Cellar Door and Lookout. Enjoy stunning views of The Hazards Mountains Range while relaxing on the deck with a glass of Devil's Corner wine.

**Open 7 Days 10am - 5pm**

Closed Christmas Day & Good Friday  
[www.devilscorner.com.au](http://www.devilscorner.com.au)

## 7 FREYCINET VINEYARD



📍 15917 Tasman Highway  
between Bicheno and Swansea  
(7km south of the Coles Bay turn off)  
(03) 6257 8574  
info@freycinetvineyard.com.au



**Open:** 10am–5pm daily October to April  
10am–4pm daily May to September  
**Closed:** Christmas Day

Advance bookings required for groups

Original viticultural pioneers of our region, the 16ha family owned vineyard is recognised for its 5-star award winning wines. 100% grown, produced and bottled on the Estate with uncompromising dedication and passion since 1979. Relax & enjoy great wines, Tasmanian cheeses, home grown extra virgin olive oil and great coffee!

[WWW.FREYCINETVINEYARD.COM.AU](http://WWW.FREYCINETVINEYARD.COM.AU)



## 8 IRON HOUSE VINEYARD

📍 21554 Tasman Highway  
Four Mile Creek 7215  
(03) 6372 2228  
admin@white-sands.com.au



**Open:** 9am–5pm daily

Iron House Tasting Room at White Sands Estate offers a range of wines, brews and spirits. Tastings are available every day or relax and enjoy a glass on the deck. Our 30 hectares of vines located on rolling hills overlooking the Tasman Sea produce fabulous sparkling, sauvignon blanc, chardonnay and pinot noir. Come visit us today.

[WWW.IRONHOUSE.COM.AU](http://WWW.IRONHOUSE.COM.AU)



*The Splendid*  
**GIN**  
TASMANIA

*Experience a twist of  
'new world' decadence with  
a romantic past.*

Internationally  
Award Winning  
Tasmanian Gins

- Cellar Door
- Tastings
- Sales
- Our 'Spiritual' Home | Spring Vale Winery

TASMANIA  
**IRON HOUSE**  
— VINEYARDS —

IRON HOUSE  
TASTING ROOM

21554 Tasman Hwy.  
Four Mile Creek.  
Tasmania 7215

IRON HOUSE  
TASMANIA

IRON HOUSE  
TASMANIA

IRON HOUSE  
TASMANIA

IRON HOUSE  
TASMANIA

OPEN 9AM TO 5PM

ironhouse.com.au

## 9 PRIORY RIDGE



280 Ansons Bay Road  
St. Helens (Route C843 or C849)  
(03) 6376 1916 / 0408 479 699  
info@prioryridgewines.com



**Open:** 11am–4pm daily. Winter opening times as per our web calendar

**Closed:** Christmas Day and Good Friday

Situated in the tranquil Priory Valley, our boutique vineyard is only minutes from St. Helens and the Bay of Fires. A unique experience: tastings and sales from a rustic cellar door; memorabilia of early settlers to Priory; an ancestral property; premium cool climate wines of distinction.

[WWW.PRIORYRIDGEWINES.COM](http://WWW.PRIORYRIDGEWINES.COM)



## KELVEDON ESTATE

Tasman Highway  
Swansea  
(10km south of Swansea)  
(03) 6257 8283  
info@kelvedonestate.com.au



**Open:** By appointment only

Kelvedon Estate is one of Tasmania's oldest farming properties. It overlooks the spectacular coastline, surrounded by sheep and vines.

[WWW.KELVEDONESTATE.COM.AU](http://WWW.KELVEDONESTATE.COM.AU)



## BEACHFRONT BICHENO



### UNWIND ON THE EAST COAST

Centrally located on Tasmania's stunningly beautiful East Coast, featuring 50 rooms, Bistro, Bar, Bottleshop, heated pool, BBQ area, free wifi and complimentary car parking.

232 Tasman Highway, Bicheno  
(03) 6375 1111  
beachfrontbicheno@kaligroup.com.au  
[beachfrontbicheno.com.au](http://beachfrontbicheno.com.au)



## FREYCINET MARINE FARM



### MOUTHWATERING FRESH SEAFOOD

Harvested daily, our own beautiful pacific oysters and Tasmanian blue mussels as well as scallops, rock lobster and abalone. You can enjoy on the deck or take away to enjoy later.

1784 Coles Bay Road, Coles Bay  
(03) 6257 0140  
oysters@freycinetmarinefarm.com  
[freycinetmarinefarm.com](http://freycinetmarinefarm.com)



## THE PONDERING FROG



### CAFE. ICE CREAMERY.

Famous handcrafted ice cream, all day breakfast, seafood chowder, surf and turf hamburger, Devonshire tea, kids playground and more. Licensed.

16494 Tasman Highway, Apslawn  
0412 631 299

[ponderingfrog.com.au](http://ponderingfrog.com.au)



## THE FISHERS @ DEVIL'S CORNER



### FRESH SEAFOOD AT DEVIL'S CORNER

The Fishers, local Tasmanian seafood, fresh oysters from the farm, mussels, local fish and chips, smoked salmon and oyster pate. Open 10am-4pm daily.

Sherbourne Road, Apslawn, Tasman Highway  
(03) 6257 8172  
oysters@freycinetmarinefarm.com  
[freycinetmarinefarm.com](http://freycinetmarinefarm.com)



## NOTES





# SOUTHERN

---

## WINE TRAIL

USING HOBART AS YOUR BASE, NO MATTER WHICH DIRECTION  
YOU CHOOSE TO VENTURE, THERE'S AN ARRAY OF WORLD-  
CLASS EXPERIENCES AND ACTIVITIES ON OFFER FOR  
VISITORS TO THIS STUNNING REGION.

The beauty of this capital city is that you're close to everything. Those eager to explore beyond the city centre will stumble across vineyards, breweries, beaches, museums and mountains right on the city's doorstep. Arts and culture, food and drink, wilderness, heritage, wildlife and waterways—all are ever present.

There's a good reason well-known foodies and wine lovers have settled in southern Tasmania. The soil is rich, the water is pure and the air is fresh, encouraging innovative locals to serve up paddock to plate goodness.

Vineyards are closer to Hobart than any other capital city. To the south you will find the fertile soils of the Huon Valley, where vineyards and orchards nestle side-by-side, and the picturesque beauty of the D'Entrecasteaux Channel.

To the east are the wineries and vineyards of the Coal River Valley, surrounding the beautiful and historic township of Richmond. To the south-east is the Tasman National Park with its spectacular coastline and historic convict sites.

To the north west is the Derwent Valley, where the road follows the beautiful Derwent River through rows of poplars, hops and vines and on to Tasmania's central highlands.

No matter which direction you choose, the fresh produce and premium wine of southern Tasmania are ready for you to explore, experience and enjoy.

[WWW.DISCOVERTASMANIA.COM.AU](http://WWW.DISCOVERTASMANIA.COM.AU)



### THINGS TO SEE AND DO



- MONA is the Museum of Old and New Art, displayed in a secular temple at Moorilla Estate: 6,000 square metres of artwork that will batter your beliefs.
- Each Saturday hosts Australia's best outdoor market on Salamanca Place – bargains and buskers, art and craft, food and wine, trash and treasure.
- Visit the pinnacle of spectacular Mt Wellington and see the entire city and its harbour below.



- Find some of Tasmania's finest wines in the heart of the city at Gasworks Cellar Door.
- In the heart of Hobart's docks, dine on fresh seafood and award winning wines at Mures Upper Deck – Winner of the Tasmanian Wine List of the Year Judge's Choice Award for 2018!
- Immerse yourself in the power of Port Arthur, its convict buildings, gardens, tours and captivating tales—an essential Tasmanian experience.

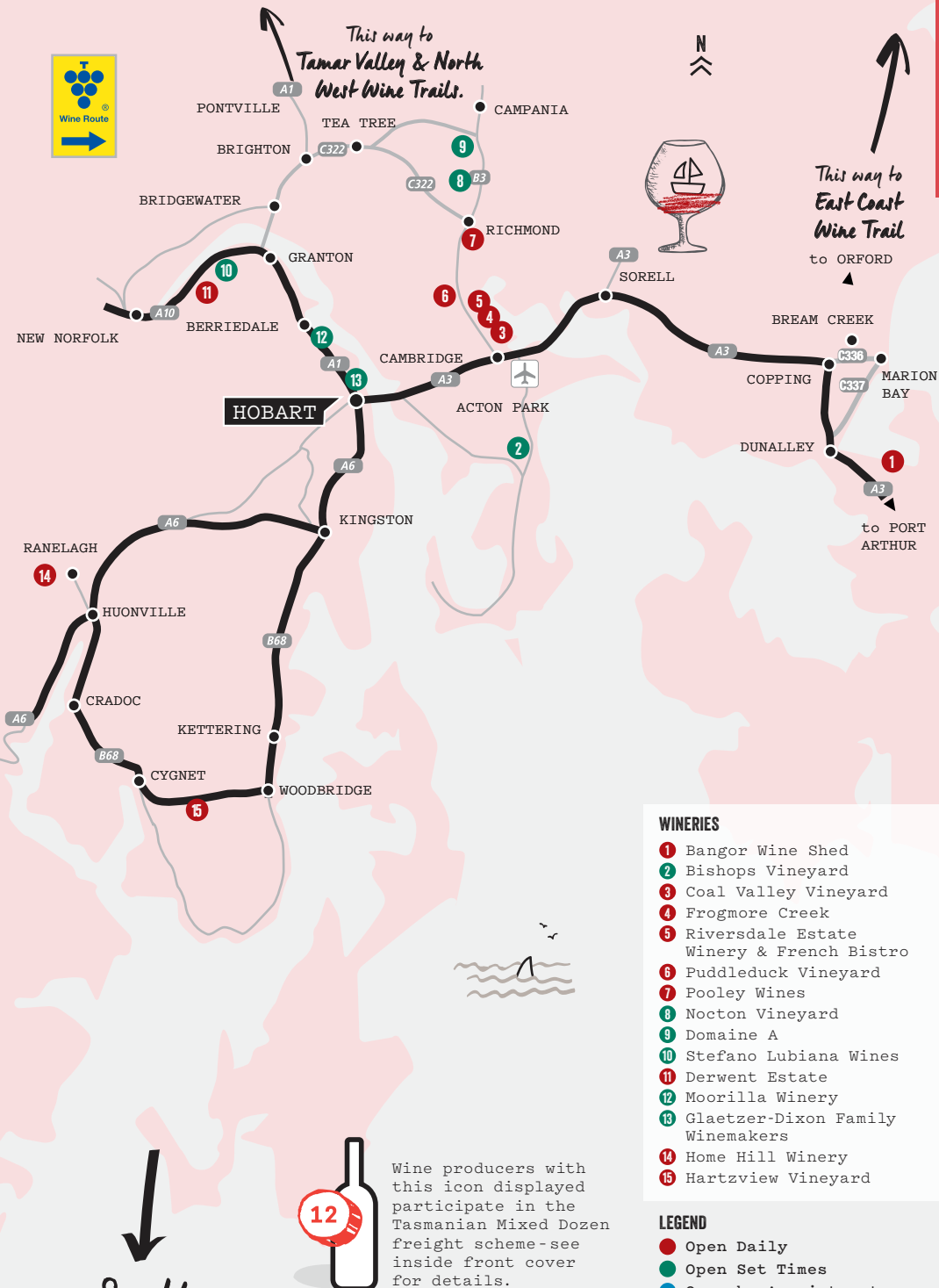


THIS WAY TO  
TAMAR VALLEY & NORTH  
WEST WINE TRAILS.



THIS WAY TO  
EAST COAST  
WINE TRAIL  
to ORFORD

to PORT  
ARTHUR



Wine producers with this icon displayed participate in the Tasmanian Mixed Dozen freight scheme—see inside front cover for details.



South  
Yep, next stop, Antarctica.

## 1 BANGOR VINEYARD SHED



📍 20 Blackman Bay Road  
Dunalley  
(03) 6253 5558  
info@bangorshed.com.au



**Open:** 10am–5pm daily

**Closed:** Christmas Day and Good Friday

Bangor is a family owned vineyard and cellar door, with stunning views over the bay. Immerse yourself in the stories behind our produce and the historic Bangor property. Wine tasting, platters, seafood, tea and coffee available.

[WWW.BANGORSHED.COM.AU](http://WWW.BANGORSHED.COM.AU)



## 2 BISHOPS VINEYARD



📍 86 Acton Road  
Acton Park  
0407 487 342  
mail@bishopsvineyard.com.au



**Open:** 11am–5pm weekends only

October–March, or by appointment

**Closed:** Public holidays

Located in the Southern beaches area, family owned and operated. The maritime climate produces classic cool climate wines. Enjoy free tastings and trek to the tree deck to enjoy vistas over the bays and beaches.

[WWW.BISHOPSVINEYARD.COM.AU](http://WWW.BISHOPSVINEYARD.COM.AU)



**Mures**<sup>®</sup>  
Upper Deck

### Award winning A La Carte Seafood Restaurant

Lunch and dinner, 7 days a week from 11 am

2018 Tasmanian Wine List of the Year - Judges Award

Victoria Dock, Hobart | 6231 2121  
[mures.com.au](http://mures.com.au) | [murestasmania](#) | [murestasmania](#)

### 3 COAL VALLEY VINEYARD

12

📍 257 Richmond Road  
Cambridge  
(03) 6248 5367  
admin@coalvalley.com.au



**Open:** 10am–5pm daily

**Closed:** Christmas, Boxing Day & Good Friday

Passionate Pinot Noir producers.

Wines made from sustainably grown estate fruit. Visit to try bubbles, Pinot, Chardonnay, Riesling and Tempranillo. Relax in the cellar door restaurant – an informal eating-place offering delicious food, estate wines, local beer & cider. Sweeping views, protea garden, vineyard walks.

[WWW.COALVALLEY.COM.AU](http://WWW.COALVALLEY.COM.AU)



### 4 FROGMORE CREEK

12

📍 699 Richmond Road  
Cambridge  
(03) 6274 5844  
admin@frogmorecreek.com.au



**Open:** 10am–5pm daily. Restaurant open daily

**Closed:** Christmas Day

The home of Frogmore Creek and Forty-Two Degrees South wines offers stunning architecture overlooking the Coal River Valley with an extensive list of premium wines on tasting.

Lunch bookings are recommended.

[WWW.FROGMORECREEK.COM.AU](http://WWW.FROGMORECREEK.COM.AU)



**PHOTO OP**

# #RICHMONDWINEWALL

SNAP | TAG | SHARE | WIN

located next to the Richmond bakery in the heart of the  
Coal River Valley – Tasmania's Premium Wine Region

**COAL RIVER VALLEY**  
TASMANIA

# GASWORKS CELLAR DOOR

EXPERIENCE TASMANIAN WINE  
IN THE HEART OF HOBART



## TASTE THE STATE WITHOUT LEAVING THE CITY

Join us in the heart of the city for a unique interaction with Tasmanian wineries from across the state. Immerse yourself in the wonderful cool-climate wines of Tasmania — the grapes we grow and the places we grow them — and gain a unique insight into perfectly hand-crafted wines.

### OPENING HOURS

11am — 5pm, Thursday to Saturday

12pm — 4pm, Sunday to Wednesday

2 Macquarie Street, Hobart TAS 7000

Phone (03) 6231 5946

[cellardoor@vantagegroup.com.au](mailto:cellardoor@vantagegroup.com.au)

[gasworkscellardoor.com.au](http://gasworkscellardoor.com.au)

**NOW AVAILABLE  
ONLINE!**



The team at the Gasworks Cellar Door hand picks the finest wines from 81 local vineyards and showcases over 300 wines and spirits sourced from across Tasmania



## 10% DISCOUNT PLUS FREE DELIVERY AUSTRALIA WIDE\*

\*when you purchase 6 or more bottles and enter the code TRAILS19

[gasworkscellardoor.com.au](http://gasworkscellardoor.com.au)

## 5 RIVERSDALE ESTATE

12

📍 Vineyard & French Bistro  
222 Denholms Road  
Cambridge  
(03) 6248 5555  
info@riversdaleestate.com.au



**Open:** 10am–5pm daily

**Closed:** Christmas Day and Good Friday

Vineyard, French Bistro, Cellar Door

Located 18 minutes from Hobart, indulge in Riversdale Estate and Roaring 40's wines, with sweeping water views; taste our award winning wines at the Cellar Door; lunch in The French Bistro or walk through our Peter Rabbit Garden. AHA 2017 Australia's Best Regional Restaurant.

[WWW.RIVERSDALEESTATE.COM.AU](http://WWW.RIVERSDALEESTATE.COM.AU)



Wine producers with this icon displayed participate in the Tasmanian Mixed Dozen freight scheme—see inside front cover for details.



*Tasmania's  
hidden  
brilliance*



# RIVERSDALE ESTATE TASMANIA

*Discover a truly unique French experience, mouth watering food, wine to match and spectacular water views, only 18 mins from Hobart. Award Winning Wines – Tasmania's most awarded Chardonnay.*



THE CELLAR  
DOOR



THE FRENCH  
BISTRO

P 6248 5555 | 222 Denholms Road Cambridge  
[www.riversdaleestate.com.au](http://www.riversdaleestate.com.au)

## 6 PUDDLEDUCK VINEYARD

12

992 Richmond Road

Richmond

(03) 6260 2301

bottomsup@puddleduck.com.au



**Open:** 10am–5pm daily (10am–4pm in Winter)

**Closed:** Christmas, Boxing Day, Good Friday and some public holidays

Family owned and operated, we welcome you to relax in our fun, friendly atmosphere and enjoy tastings of our handcrafted wines or a vineyard platter while soaking up the view. Enjoy our “Everything Ducky Duck Shop” or perhaps a vineyard and winery tour. More information available on our website.

[WWW.PUDDLEDUCK.COM.AU](http://WWW.PUDDLEDUCK.COM.AU)



## 7 POOLEY WINES

12

1431 Richmond Road

Richmond

(03) 6260 2895

enquiries@pooleywines.com.au



**Open:** 10am–5pm daily

**Closed:** Christmas, Boxing Day & Good Friday

Groups by appointment only

Experience award winning premium wines in the beautiful 1830s sandstone cellar door at Pooley Wines, near Richmond historic village. Awarded ‘Best Small Cellar Door in Southern Tasmania’ 2014, 2015, 2017 & 2018 and ‘Best Wine Tasting Experience 2016’ by Gourmet Traveller Wine. Enjoy platters and hot drinks daily, or wood fired pizza (weekends).

[WWW.POOLEYWINES.COM.AU](http://WWW.POOLEYWINES.COM.AU)



★★★★★  
5 BED STARS JAMES HALLIDAY

# DISCOVER TASMANIA'S FINEST

**BEST SMALL CELLAR DOOR**  
2014, 2015, 2016, 2017  
GOURMET TRAVELLER WINE

**POOLEY**

PREMIUM  
TASMANIAN WINES

**COME FIND US!**  
HISTORIC RICHMOND  
OPEN 7 DAYS FOR WINE TASTINGS  
10AM – 5PM

## 8 NOCTON VINEYARD



📍 373 Colebrook Road  
Richmond  
(03) 6260 2688 / 0409 205 100  
cellardoor@noctonwine.com.au



**NOCTON**  
VINEYARD

**Open:** 10am–4pm Wednesday to Saturday  
**Closed:** Christmas, Boxing Day & New Year's Day

"A moment of pleasure 200 million years in the making."

Open for tastings and sales just a couple of minutes outside Richmond, the property dates from 1813 and is named after Lord Hobart's ancestral home in England. Planted on 200m year old clay and limestone, it's great wine from the heart of the Coal Valley.

[WWW.NOCTONWINE.COM.AU](http://WWW.NOCTONWINE.COM.AU)



## 9 DOMAINE A

📍 105 Tea Tree Road  
Campania  
(03) 6260 4174  
cellardoor@domaine-a.com.au



**Open:** Please refer to [www.domaine-a.com.au](http://www.domaine-a.com.au) for current opening hours

Established in 1973, Stoney Vineyard is the oldest in Tasmania's Coal River Valley and from there, Domaine A has built an international reputation for its world-class stable of mature, cool-climate wines.

[WWW.DOMAINE-A.COM.AU](http://WWW.DOMAINE-A.COM.AU)



## 10 STEFANO LUBIANA WINES

📍 Winery – Osteria – Distillery  
60 Rowbottoms Road  
Granton 7030  
(03) 6263 7457  
marketing@slw.com.au



**Open:** 11am–4pm Wednesday to Sunday.  
Limited hours in July & August, check our website for opening hours  
**Closed:** Monday & Tuesday. Christmas, Boxing Day, New Years Day and some public holidays, check website for details

Just 20 minutes north of Hobart, our welcoming Tuscan-style cellar door and Osteria offers wine and grappa tastings and lunch. Three-time International Champion for best Biodynamic Wine, IWC. All wines low sulphur and vegan friendly.

[WWW.SLW.COM.AU](http://WWW.SLW.COM.AU)



let's show you

# tasmania

## wine tours

for couples or groups of all sizes  
specialising in social/corporate  
and pre-wedding events  
departing from Hobart

call **0418 576 489**  
[www.showyoutasmania.com.au](http://www.showyoutasmania.com.au)

## 11 DERWENT ESTATE

12



📍 329 Lyell Highway  
Granton  
(03) 6263 5802  
[wine@derwentestate.com.au](mailto:wine@derwentestate.com.au)



**Open:** 11am–4pm daily, 11am–5pm Dec–Feb  
**Closed:** Christmas, Boxing Day, New Year's Day and Good Friday. Please check the website for other public holidays

Winemaker John Schuts and Viticulturist Andrew Hanigan are producing world class cool climate wines in our purpose built on-site straw-bale winery set on the picturesque banks of the Derwent River just 20 minutes north of Hobart.

[WWW.DERWENTESTATE.COM.AU](http://WWW.DERWENTESTATE.COM.AU)



## 12 MOORILLA

📍 655 Main Road  
Berriedale  
(03) 6277 9900  
[cellardoor@moorilla.com.au](mailto:cellardoor@moorilla.com.au)



**Open:** 9:30am–5pm Wednesday to Monday  
**Closed:** Tuesdays

Moorilla is a winery with a museum attached. Moorilla's owner, David Walsh, is also the creator of Mona. Moorilla creates small-batch, cool-climate wines with new-world fruit and old-world complexity, showcasing the terroir of its two vineyards.

[WWW.MOORILLA.COM.AU](http://WWW.MOORILLA.COM.AU)



## 13 GLAETZER-DIXON

12



📍 93 Brooker Avenue  
Hobart  
0417 852 287  
[nick@gdfwinemakers.com](mailto:nick@gdfwinemakers.com)



**Open:** Tasting Room open 11am–5pm weekends. By appointment other times and for groups

Winemaker Nick Glaetzer has transformed an iconic warehouse on the edge of Hobart's CBD into the base for his award-winning company Glaetzer-Dixon Family Winemakers.

- Vignerons since 1888
- Winner of the 50th Jimmy Watson Memorial Trophy
- Gourmet Traveller Wine Young Winemaker of the Year

[WWW.GDFWINEMAKERS.COM](http://WWW.GDFWINEMAKERS.COM)



## 14 HOME HILL WINERY

📍 38 Nairn Street  
Ranelagh  
(03) 6264 1200  
info@homehillwines.com.au



**Open:** Cellar door open daily. Award-winning restaurant on site - please see website for times

One of Tasmania's most awarded boutique wineries just 30 minutes south of Hobart. Winner of the Jimmy Watson Trophy 2014.

[WWW.HOMEHILLWINES.COM.AU](http://WWW.HOMEHILLWINES.COM.AU)



## 15 HARTZVIEW VINEYARD

📍 70 Dillons Road  
Gardners Bay  
(03) 6295 1623  
robpaterson@hartzview.com.au



**Open:** 10am–5pm daily, 10am–4pm in winter

**Closed:** Christmas Day and Good Friday

Café serves all day lunches and platters

Taste from our large range of cool-climate table wines. The popular Tasmanian Cassis and Spiced Apple Liqueur Mead are two of our range of preservative free fortified wines. Spa Cottage self-contained accommodation available. Self-guided heritage pickers hut walk.

[WWW.HARTZVIEW.COM.AU](http://WWW.HARTZVIEW.COM.AU)



Just thirty minutes  
*South* of Hobart



RESTAURANT | CELLAR DOOR | GIFT SHOP



One of Tasmania's most awarded wineries and top pinot noir producers. Winner of the prestigious Jimmy Watson trophy 2015.

HOME HILL WINERY & RESTAURANT

38 Nairn St, Ranelagh | 62 641 200 | homehillwines.com.au

## BREAM CREEK

📍 Cellar door sales  
and tastings at  
Dunalley Waterfront Cafe  
4 Imlay Street, Dunalley  
(03) 6253 5122 (Café)  
info@breamcreekvineyard.com.au



**Open:** 9am–4pm daily

Vineyard open by appointment – phone Fred on 0419 363 714

Originally planted in the early 1970's, Bream Creek produces premium cool climate wines with intense, refreshing varietal characters, and is one of the world's few producers of the aromatic white wine variety Schönburger.

[WWW.BREAMCREEKVINEYARD.COM.AU](http://WWW.BREAMCREEKVINEYARD.COM.AU)



## CAPE BERNIER VINEYARD



📍 230 Bream Creek Road  
Bream Creek  
(03) 6253 5443  
info@capebernier.com.au



**Open:** 10am–5:30pm Thursday to Sunday  
October–April, for tastings and sales

Cape Bernier is a family-run vineyard overlooking stunning Marion Bay featuring estate grown sparkling, red and white wines.

[WWW.CAPEBERNIER.COM.AU](http://WWW.CAPEBERNIER.COM.AU)



## CLEMENS HILL VINEYARD

📍 686 Richmond Road  
Cambridge  
0437 008 069  
maria@clemenshill.com



**Open:** By appointment, bookings can be made via our website or sms Maria on 0437 008 069

Admire the panoramic views of the Coal River Valley from our terrace, whilst indulging in our interesting, multi-award winning wines.

[WWW.CLEMENSHILL.COM.AU](http://WWW.CLEMENSHILL.COM.AU)



## CRAIGOW VINEYARD

📍 528 Richmond Road  
Cambridge  
0418 126 027  
info@craigow.com.au



**Open:** 11am–4pm daily January to March, weekends all year round. Other times by appointment

**Closed:** Public holidays

An original farm worker's cottage now provides a scenic setting in which to taste the current Craigow vintages.

[WWW.CRAIGOW.COM.AU](http://WWW.CRAIGOW.COM.AU)



## DOMAINE SIMHA

SÜD POLAIRE / INSTITUT POLAIRE

📍 Institut Polaire  
1/7 Murray Street, Hobart  
0432 925 895 / 0403 773 871  
institut@sudpolaire.com



**Open:** 3pm till late Wednesday to Sunday  
(from 12pm Saturdays)

The avant-garde wines of Domaine Simha are shaped 'au naturel' to reflect epic Tasmanian terroir. Spectacular artisan single vineyard wine and bracing Antarctic dry Süd Polaire Spirits. Wine bar and tasting experiences (fees apply).

'A RARE TALENT' GOURMET TRAVELLER WINE

[WWW.DOMAINESIMHA.COM](http://WWW.DOMAINESIMHA.COM)  
[WWW.SUDPOLAIRE.COM](http://WWW.SUDPOLAIRE.COM)  
[WWW.INSTITUTPOLAIRE.COM.AU](http://WWW.INSTITUTPOLAIRE.COM.AU)



## PRESSING MATTERS

📍 665 Middle Tea Tree Road  
Tea Tree

(03) 6268 1947

0408 126 668

mail@pressingmatters.com.au



**Open:** Most days by appointment

32 trophies (including 7 Most Successful Tasmanian Exhibitor) and 54 gold medals since 2008, confirm the quality of Rieslings and Pinot Noir produced in our 7Ha vineyard. Tastings welcomed by appointment - no obligation to purchase, free delivery within Australia.

[WWW.PRESSINGMATTERS.COM.AU](http://WWW.PRESSINGMATTERS.COM.AU)



**MCHENRY DISTILLERY**  
... TASMANIA ...  
CELLAR DOOR OPEN  
7 DAYS A WEEK  
10AM TO 4PM

229 RADNOR ROAD, PORT ARTHUR  
T (03) 6250 2533  
E CONTACT@MCHENRYDISTILLERY.COM.AU  
W MCHENRYDISTILLERY.COM.AU

## KATE HILL WINES

📍 21 Dowlings Road  
Huonville

0448 842 696

info@katehillwines.com.au

**Open:** 11am–5pm Friday to Sunday. Other times by appointment

[WWW.KATEHILLWINES.COM.AU](http://WWW.KATEHILLWINES.COM.AU)



## LAUREL BANK

📍 130 Black Snake Road  
Granton

(03) 6263 5977

info@laurelbankwines.com.au

**Open:** Cellar Door open by appointment only

[WWW.LAURELBANKWINES.COM.AU](http://WWW.LAURELBANKWINES.COM.AU)



## MEWSTONE WINES

📍 11 Flowerpot Jetty Road  
Flowerpot

0439 367 653

jonny@mewstonewines.com.au

**Open:** Vineyard/cellar door open by appointment

[WWW.MEWSTONEWINES.COM.AU](http://WWW.MEWSTONEWINES.COM.AU)



## OBSERVATORY HILL

📍 103/7 Centauri Drive  
Mt Rumney  
0419 004 167 / 0407 039 146  
info@observatoryhill.com.au

**Open:** By appointment, check our Facebook page for other special opening times

[WWW.OBSERVATORYHILL.COM.AU](http://WWW.OBSERVATORYHILL.COM.AU)



## PETRICHOR WINES

📍 41 Rosewood Lane  
Tea Tree  
0422 437 449  
kate@petrichorwines.com.au

**Open:** By appointment

[WWW.PETRICHORWINES.COM.AU](http://WWW.PETRICHORWINES.COM.AU)



## TOLPUDDLE VINEYARD

📍 37 Back Tea Tree Road  
Richmond  
(08) 8155 6003  
info@tolpuddlevineyard.com

No tasting facility at present – visit our website for more information.

[WWW.TOLPUDDLEVINEYARD.COM](http://WWW.TOLPUDDLEVINEYARD.COM)



## LAWRENNY ESTATE DISTILLING



Lawrenny Estate is a distillery that is expecting to have their first Whisky released in early 2020. Situated on the banks of the River Derwent, Lawrenny has a current range of award winning Gin and Vodka products. Cellar door sales open 11am to 3pm daily.

6485 Lyell Highway, Ouse  
0438 966 020  
jensen@lawrenny.com  
[lawrenny.com](http://lawrenny.com)



## LONG LUNCH TOUR CO



**JOIN US.**

Come on a journey of gastronomical proportions indulging in cool climate wines and produce of a world class nature. Experience the jaw dropping wines and scenery of Hobart's surrounds and Freycinet Coast.

0409 225 841  
info@longlunchtourco.com.au  
[longlunchtourco.com.au](http://longlunchtourco.com.au)



## AGEING BARREL TOURS



**SOUTHERN TASMANIA'S PREMIER WINE TOUR EXPERIENCE.**

Unique experiences; premium wines, local people & local produce. We visit Coal River, Huon & Derwent Valleys & East Coast Regions.

16–20 Davey St, Hobart  
(03) 6289 5341  
hello@ageingbarrel.com.au  
[ageingbarrel.com.au](http://ageingbarrel.com.au)



# VINEYARD LISTINGS

<u>VINEYARD</u>	<u>PAGE</u>	<u>VINEYARD</u>	<u>PAGE</u>	<u>VINEYARD</u>	<u>PAGE</u>
Apogee	23	Freycinet Vineyard	33	Nocton Vineyard	43
Bangor Vineyard Shed	38	Frogmore Creek	39	Observatory Hill	48
Barringwood	8	Gala Estate	32	Petrichor Wines	48
Bay of Fires Winery	18	Ghost Rock	6	Pipers Brook Vineyard	16
Beautiful Isle Wines	23	Glaetzer-Dixon	44	Pooley Wines	42
Bell & Gong	24	Goaty Hill Wines	20	Pressing Matters	47
Bishops Vineyard	38	Grey Sands	24	Prickly Mo Wines	8
Bream Creek	45	Hartzview Vineyard	45	Priory Ridge	34
Brook Eden Vineyard	15	Holm Oak Vineyards	19	Providence Vineyard	13
Cabbage Tree Hill Wines	24	Home Hill Winery	45	Puddleduck Vineyard	42
Cape Bernier Vineyard	46	Iron House Vineyard	33	Relbia Estate	13
Chartley Estate	24	Iron Pot Bay Vineyard	19	Riversdale Estate	41
Clemens Hill Vineyard	46	Jansz Tasmania	16	Sharmans Wines	12
Clover Hill Wines	15	Josef Chromy Wines	12	Sinapius Vineyard	17
Coal Valley Vineyard	39	Kate Hill Wines	47	Spring Vale Vineyards	31
Craigie Knowe Vineyard	31	Kelvedon Estate	34	Stefano Lubiana Wines	43
Craigow Vineyard	46	La Villa Wines	6	Stoney Rise/Holyman	22
Dalrymple Vineyards	17	Laurel Bank	47	Tamar Ridge	22
Darlington Vineyard	30	Leaning Church Vineyard	14	The Ridge North Lilydale	14
Delamere Vineyards	18	Leven Valley Vineyard	9	Tolpuddle Vineyard	48
Derwent Estate	44	Marion's Vineyard	21	Velo Wines	25
Devil's Corner	32	Mewstone Wines	47	Waterton Hall Wines	25
Domaine A	43	Milton Vineyard	30	Wines for Joanie	21
Domaine Simha / Súd Polaire	46	Moores Hill	20	Winter Brook Vineyard	25
		Moorilla Winery	44		



WINE  
TASMANIA.COM.AU